

CORNER RECORD

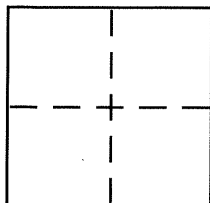
BK 75 PG 15

Document Number CR 7848

City of BERKELEY

County of ALAMEDA, California

Brief Legal Description CITY OF BERKELEY MONUMENT B2420



CORNER TYPE

Government Corner ☐ Control ☒
Meander ☐ Property ☐
Rancho ☐ Other ☐
Date of Survey 11-16-2015

COORDINATES (Optional)

N. _____
E. _____
Zone _____ NAD27 ☐ NAD83 ☐
NAD83 Epoch _____
Elev. _____
Vert. Datum: NGVD29 ☐ NAVD88 ☐
Meas. Units: Metric ☐ Imperial ☐

Corner – Left as found ☒ Found and tagged ☐ Established ☐ Reestablished ☐ Rebuilt ☐

Identification and type of corner found: Evidence used to identify or procedure used to establish or reestablish the corner:
**IN COMPLIANCE WITH SECTION 8771 OF THE PROFESSIONAL LAND SURVEYORS' ACT, THIS CORNER
RECORD IS BEING FILED TO ESTABLISH THE POSITION OF AN EXISTING MONUMENT PRIOR TO
SANITARY SEWER CONSTRUCTION.**

A description of the physical condition of the monument as found and as set or reset: _____

SEE PAGE 2

SURVEYOR'S STATEMENT

This Corner Record was prepared by me or under my direction in conformance with
the Land Surveyor's Act on NOVEMBER 24, 2015

Signed [Signature] P.L.S or R.C.E. No. 5003

COUNTY SURVEYOR'S STATEMENT

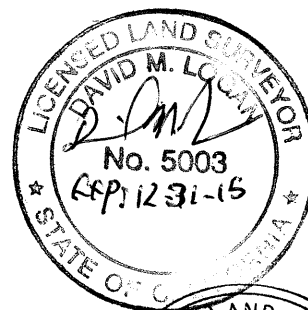
This Corner Record was received 12-09-2015

and examined and filed 12-23-2015

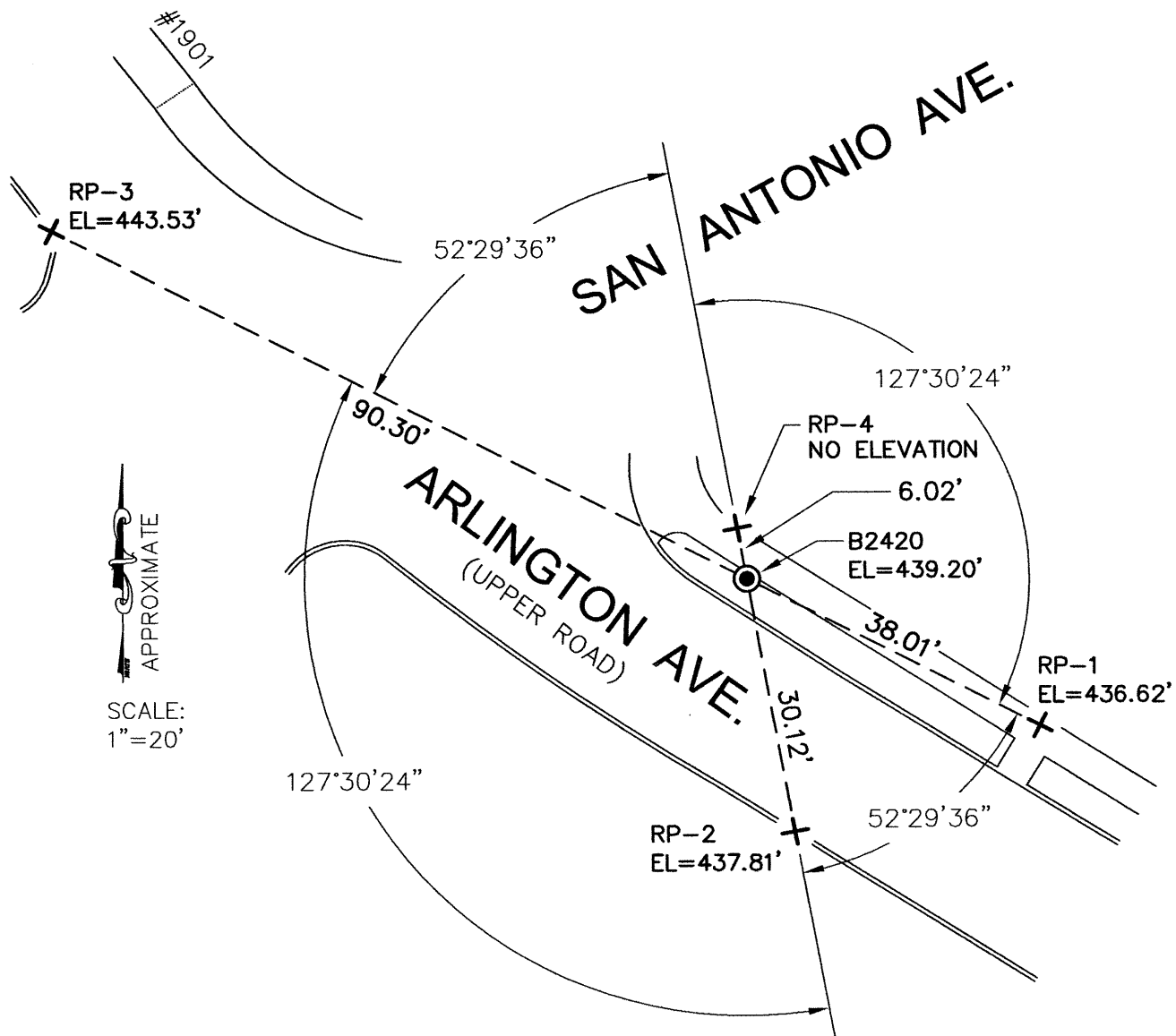
Signed Albert Jordan P.L.S or R.C.E. No. 6623

Title Deputy County Surveyor

County Surveyor's Comment _____



VL23D7



LEGEND

- 1/4" BRASS PIN CITY MONUMENT IN A STANDARD MONUMENT WELL
- + SET REFERENCE CROSS

NOTE:

THE EXISTING MONUMENT AS SHOWN IS REFERENCED BY STRAIGHT LINES BETWEEN RP-1 TO RP-3 AND RP-2 TO RP-4.