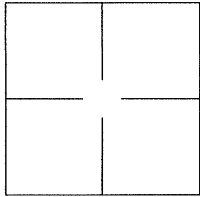


# CORNER RECORD

Agency Index BK 125 PG 13Document Number CR 13520City of OAKLANDCounty of ALAMEDA, CaliforniaBrief Legal Description MONUMENT FOUND AT THE INTERSECTION OF 28TH STREET & MAGNOLIA STREET

## CORNER TYPE

Government Corner ☐ Control ☒  
Meander ☐ Property ☐  
Rancho ☐ Other ☐

Date of Survey 2019-08-01

## COORDINATES (Optional)

N. \_\_\_\_\_ E. \_\_\_\_\_

Elevation \_\_\_\_\_

Units Metric ☐ U.S. Survey Foot ☐

Horizontal Datum \_\_\_\_\_

Zone \_\_\_\_\_ Epoch Date \_\_\_\_\_

Vertical Datum: \_\_\_\_\_

☐ Complies with Public Resources Code §§8801-8819☐ Complies with Public Resources Code §§8890-8902PLS Act Ref.: ☐ 8765(d) ☒ 8771 ☐ 8773

Other: \_\_\_\_\_

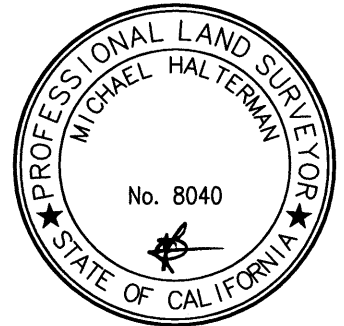
Corner/  
Monument: ☐ Left as found ☐ Established ☐ Rebuilt ☒ Pre-Construction  
☐ Found and tagged ☐ Reestablished ☒ Referenced ☐ Post-Construction

Narrative of corner identified and monument as found and set or reset:

☒ See sheet #2 for description(s):

## SURVEYOR'S STATEMENT

This Corner Record was prepared by me or under my direction in conformance with  
the Land Surveyor's Act on 25 SEPTEMBER, 2019.

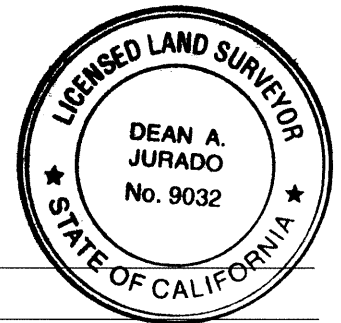
Signed [Signature] P.L.S. or R.C.E. No.: 8040

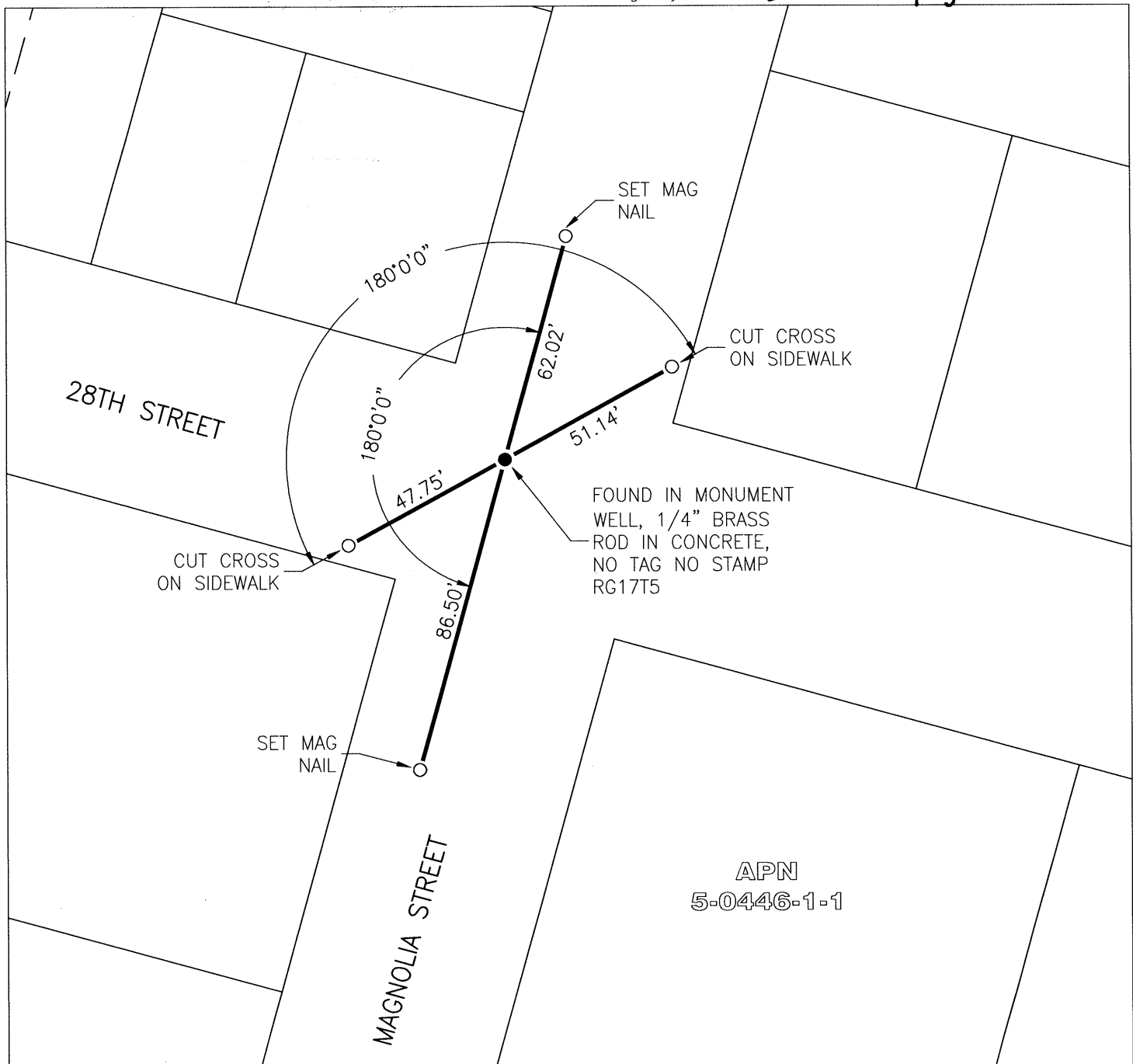
## COUNTY SURVEYOR'S STATEMENT

This Corner Record was received October 1, 2019 and examined  
and filed October 4, 2019.

Signed [Signature] P.L.S. or R.C.E. No.: 9032Title Interim County Surveyor

County Surveyor's Comment \_\_\_\_\_





## LEGEND

NOTE: ALL PIPE SIZES ARE INSIDE DIAMETER

- FOUND MONUMENT AS NOTED
- SET REFERENCE POINT AS NOTED TAGGED LS 8040

AA##A# ALAMEDA COUNTY MONUMENT ID NUMBER

SCALE

1" = 40'

## NOTES

1. NO CLAIM IS MADE AS TO THE RELATIONSHIP OF THE MONUMENTS FOUND AND SHOWN HEREON TO THE TRUE BOUNDARY LOCATIONS.