

JOB: 16049

CONTRACT DATE: 4.3.17  
BUILDING TYPE: EXPLORER LG-54  
PLAN VERSION: NOVEMBER 2015  
SITE NUMBER: XXXXX  
STORE NUMBER: XXXX

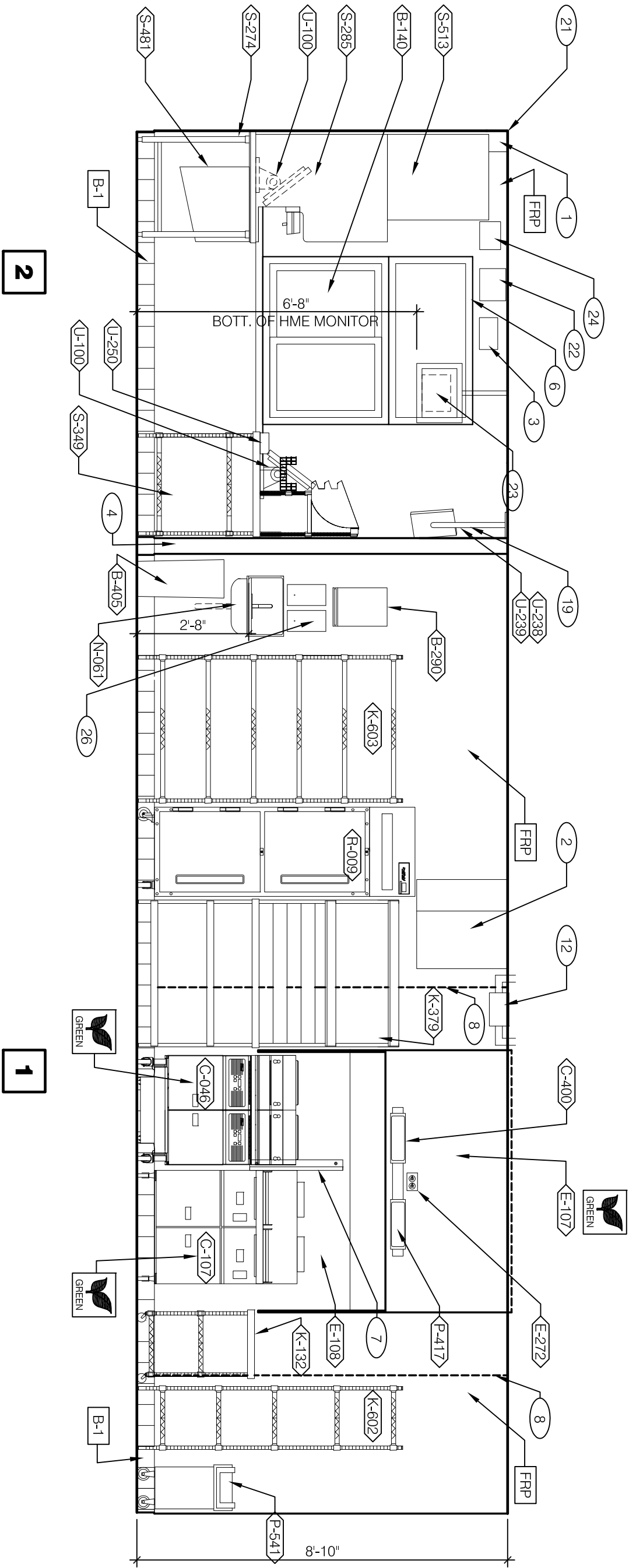
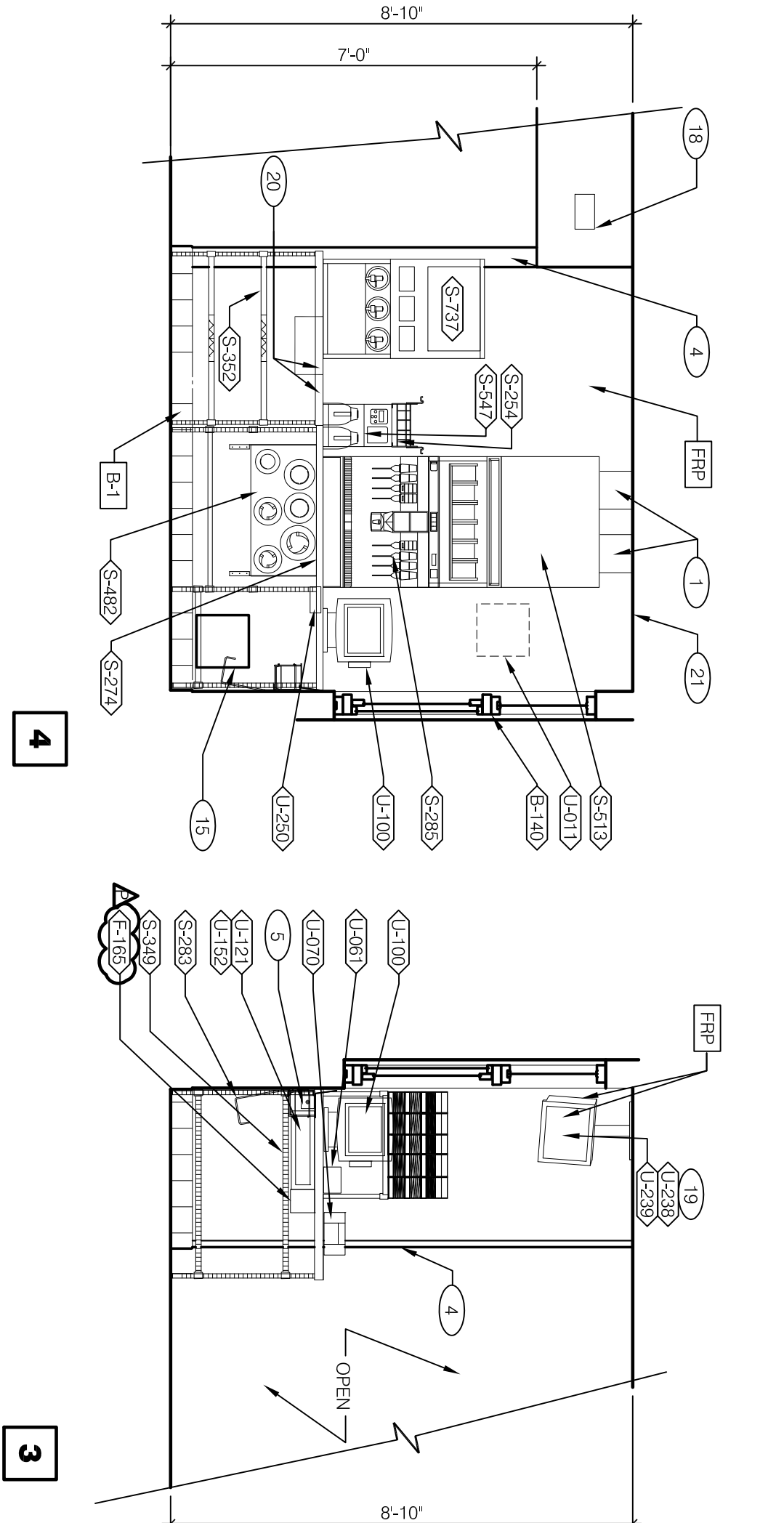
TACO BELL  
LAKEPOINT  
EMERSON, GA 30137

TACO BELL  
EXPLORER

INTERIOR  
ELEVATIONS  
KITCHEN

A8.2

PLOT DATE: 08/17/17

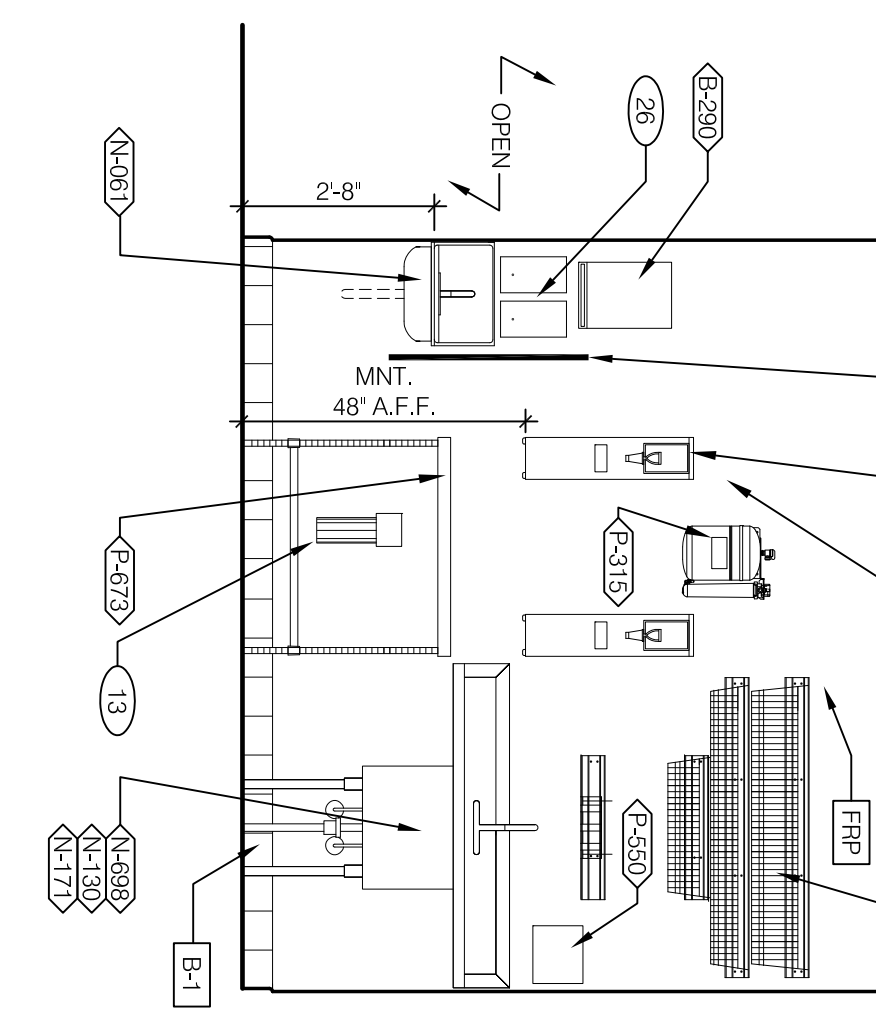
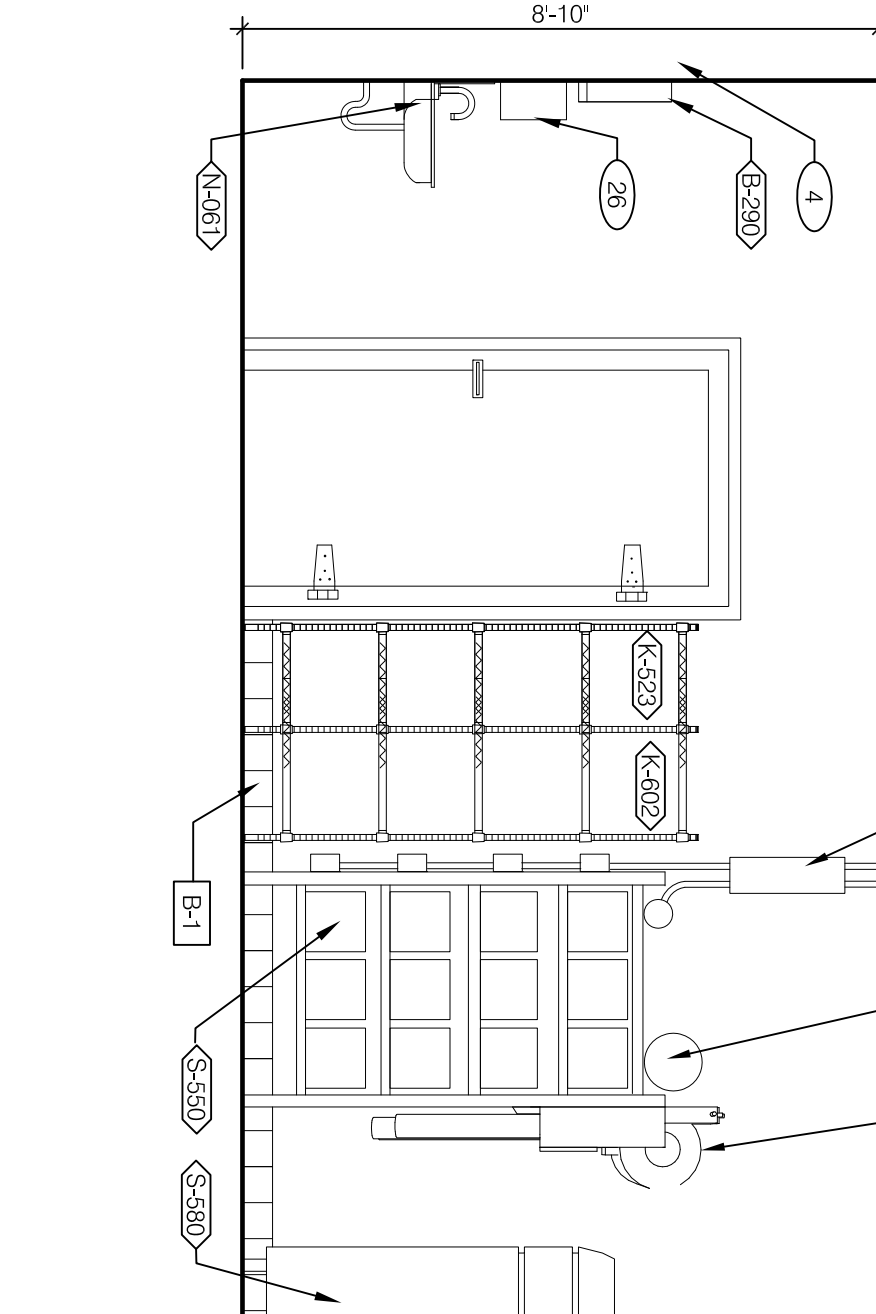
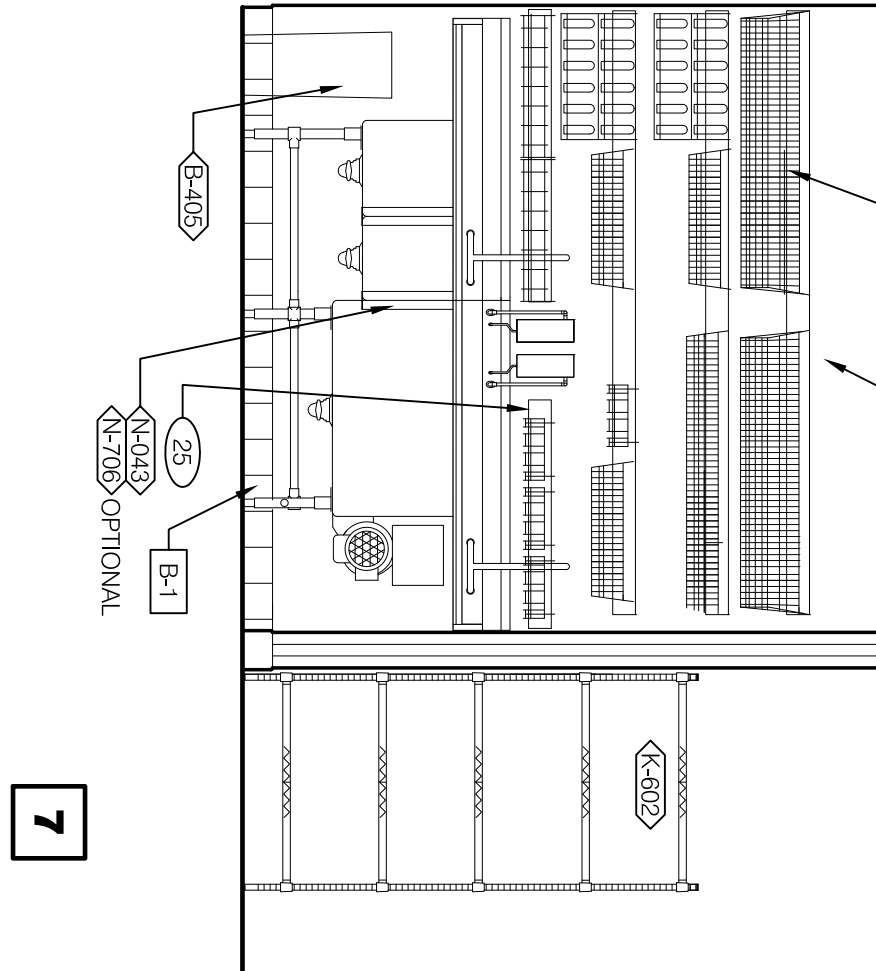
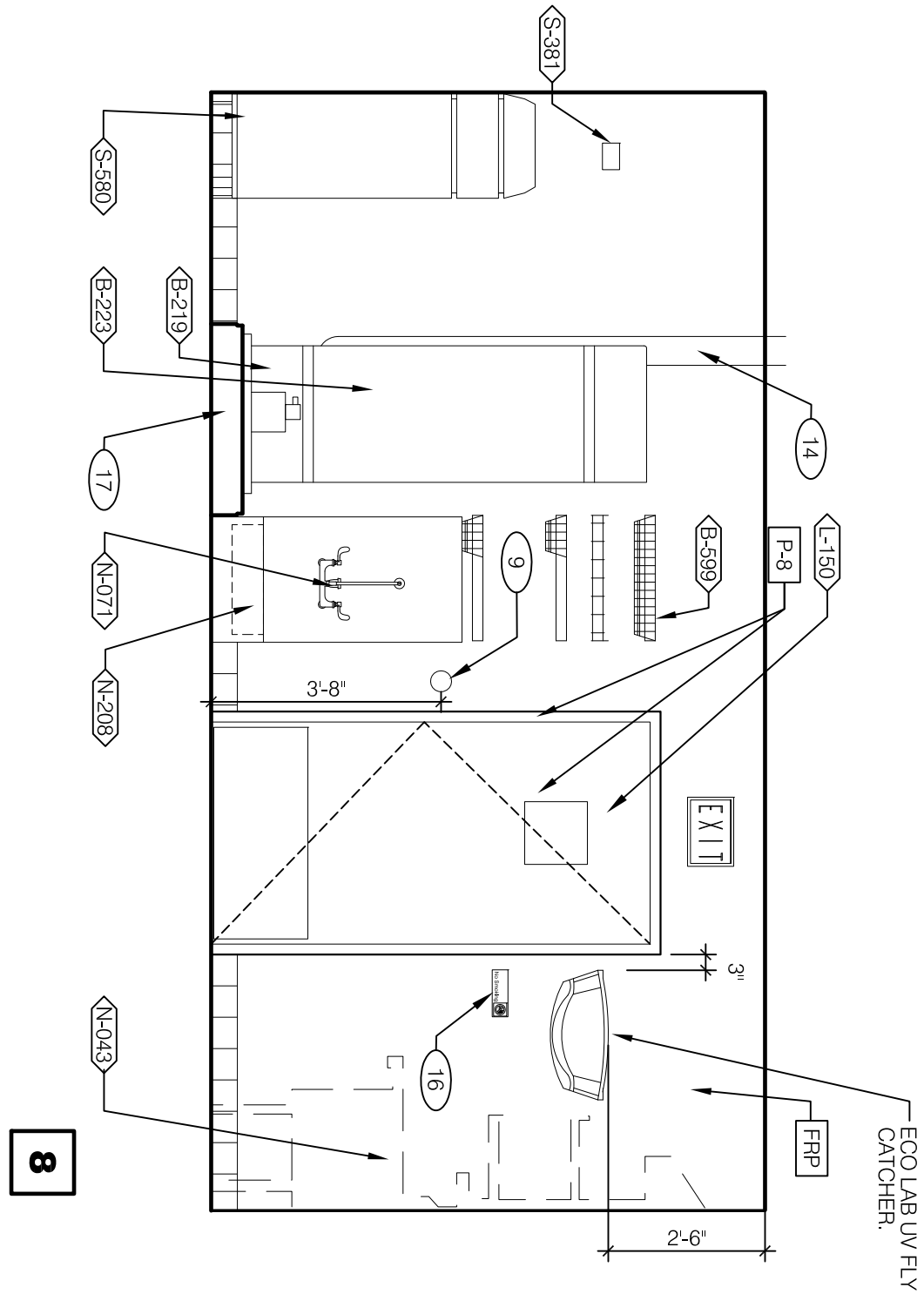


DRIVE-THRU 3/8" = 1'-0"

DRIVE-THRU 3/8" = 1'-0"

DRIVE-THRU 3/8" = 1'-0"

TB COOK 3/8" = 1'-0"

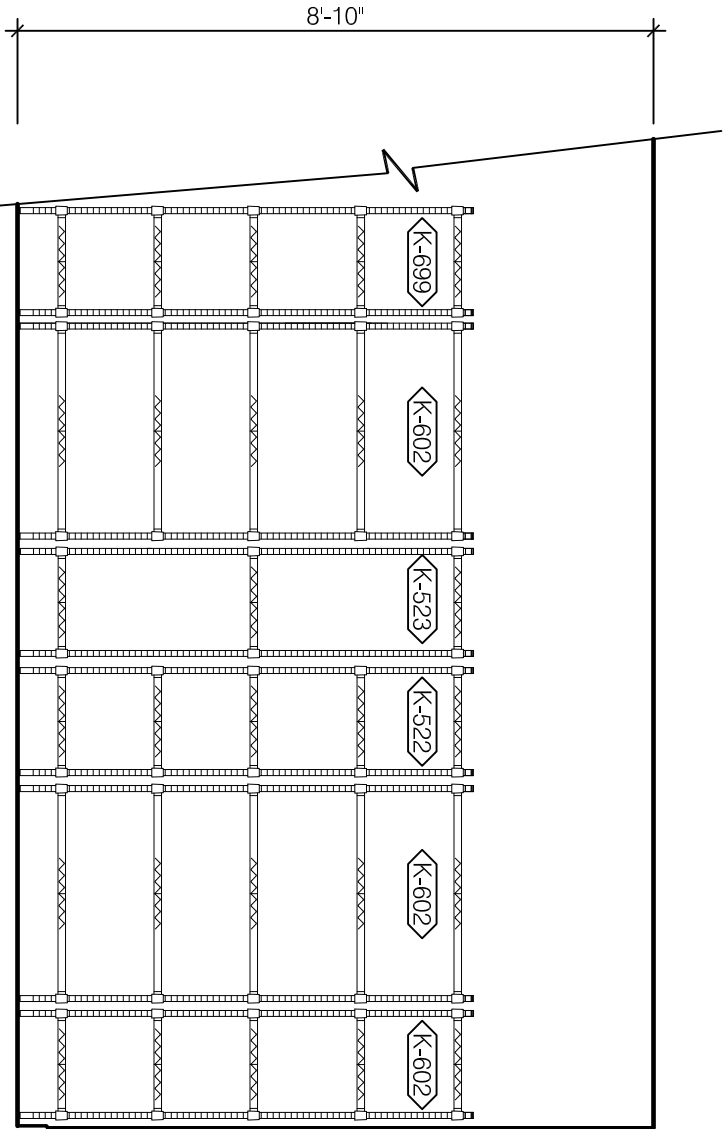


UTILITY 3/8" = 1'-0"

WARE WASHING 3/8" = 1'-0"

UTILITY 3/8" = 1'-0"

WARE WASHING 3/8" = 1'-0"



DRY STORAGE 3/8" = 1'-0"

KEY NOTES

A

- 1 STAINLESS STEEL CHASE FOR STRIP LINES & ICE MACHINE REFRIGERANT LINES. SEE DETAIL 19/A6.4
- 2 ANSUL CABINET.
- 3 DRIVE-THRU TIMER DISPLAY UNIT.
- 4 SS CORNER / END WALL CHANNEL GUARD. FULL HEIGHT. SEE DETAIL 19/A6.3.
- 5 HOLD-UP BUTTON.
- 6 SS CORNER GUARDS AT PERIMETER OF DT WINDOW. SEE DETAILS 5 & 8/A6.1 AND SCOPE OF WORK FOR RESPONSIBILITIES.
- 7 SPLASH GUARD. SEE DETAIL 9/A6.3.
- 8 EDGE OF SS PANEL, BEHIND HOOD.
- 9 ANSUL PULL STATION.
- 10 1-80X AND OUTLET INCLUTED WITH HOOD. INSET WITH FLUSH WITH FACE OF HOOD.
- 11 20 GA. STAINLESS STEEL PANEL BEHIND HOOD.
- 12 GAS SHUT-OFF VALVE.
- 13 FILTER FOR HOT WATER SYSTEM.
- 14 WATER HEATER FLE. SEE PLUMBING DRAWINGS.
- 15 OPENING FINISHED WITH FRP FOR STRIP TUBES. SEE DETAIL 11/A6.4.
- 16 NO SMOKING SIGN.
- 17 6" HIGH WATER HEATER PLATFORM.
- 18 ALERT LIGHT BOX FOR 3-COMP POWER SOAK.
- 19 CEILING MOUNT MONITOR BRACKET. SEE DETAIL 2/A6.3.
- 20 ADJACENT TABLE TOPS TO BE INSTALLED AT SAME LEVEL. ADJUST IN THE FIELD AS REQUIRED.
- 21 RAISE INDICATED SECTION OF CEILING TO 8'-10". SEE SHEET A7.1.
- 22 DT TIMER SIGNAL PROCESSOR.
- 23 DT TIMER MONITOR AND CONTROL UNIT.
- 24 DT TIMER ETHERNET SWITCH.
- 25 CUT WALL-HANGING SYSTEM.
- 26 SOAP / HAND SANITIZER DISPENSER - BY ECO LAB.