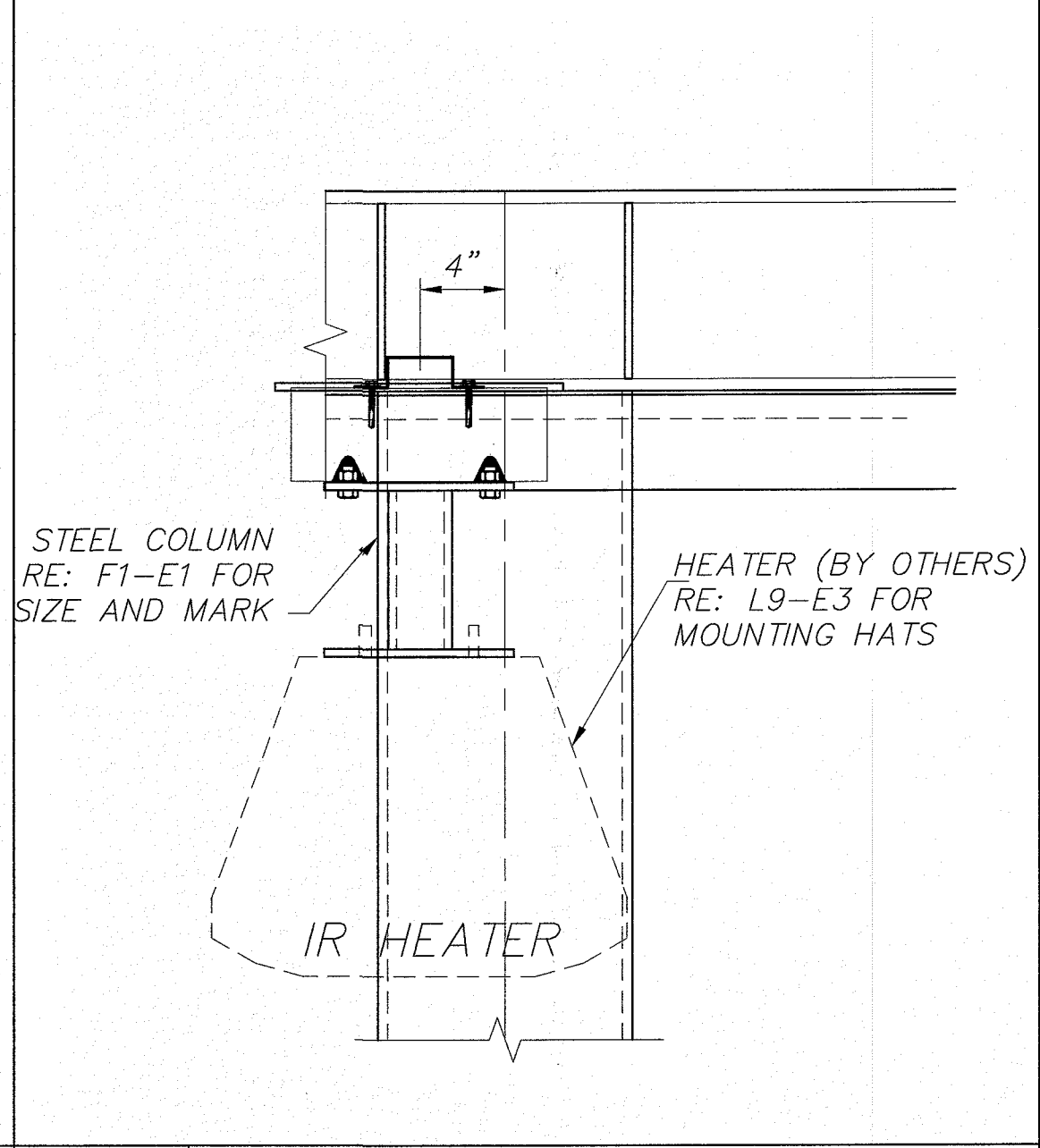
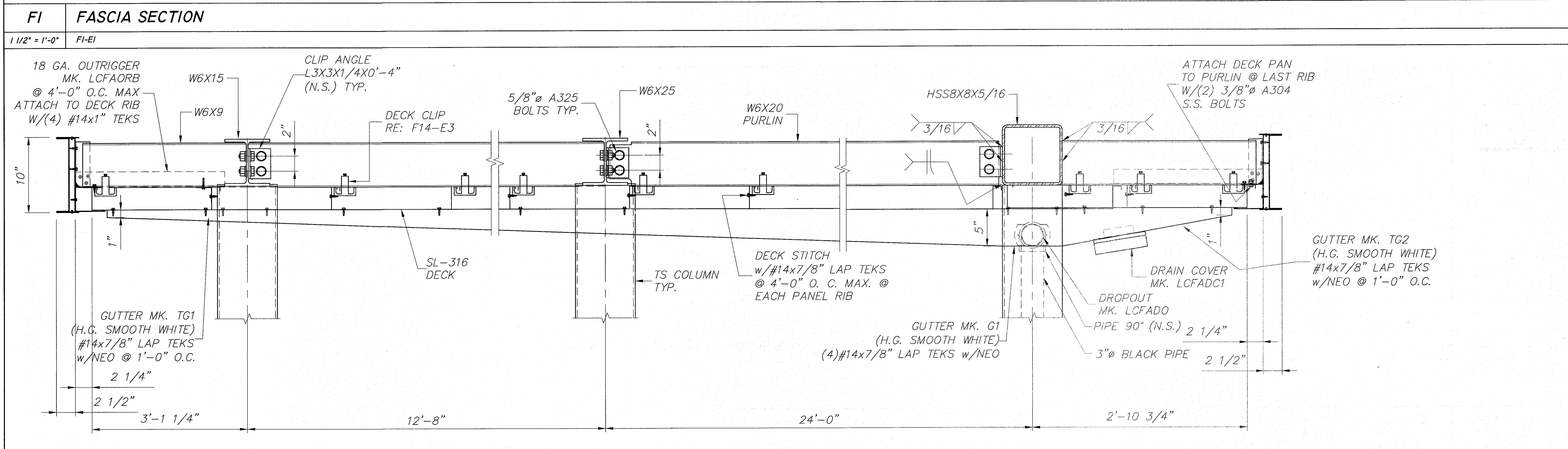


LI4 SECTION AT BUILDING
N.T.S. FI-E2



FI4 SECTION AT HEATER
N.T.S. FI-E2



DEAD LOAD = 3 p.s.f.(DECK + LIGHTS) +
WEIGHT OF STRUCTURAL COMPONENTS
LIVE LOAD = 20 p.s.f.
SNOW LOAD = 5 p.s.f.
V₁ ULT = 116 m.p.h. EXP C
V₁ ASD = 90 m.p.h. EXP C
BLDG CODE = 2012 INTERNATIONAL BUILDING CODE
W/ GEORGIA AMENDMENTS 2014, 2015, 2017
EQUIVALENT LATERAL FORCE PROCEDURE
LATERAL FORCE RESISTING SYSTEM = CANTILEVERED
COLUMN SYSTEM-ORDINARY STEEL MOMENT FRAME
SITE CLASS = D
S_s (0.2) = 0.28
S₁ (1.0) = 0.11
SDS = 0.29
SD1 = 0.17
F_a = 1.58
F_v = 2.38
R = 1.25
IMPORTANCE FACTOR = 1.0
RISK CATEGORY = II
SEISMIC DESIGN CATEGORY = B
CS = 0.232
CONSTRUCTION TYPE = IIB
OCCUPANCY CATEGORY = M
TOTAL SEISMIC BASE SHEAR BOTH DIRECTIONS = 0.94 KIPS

AI4 FASCIA SECTION
1 1/2" = 1'-0" FI-EI

AI4 DESIGN LOADS
N.T.S.

Chick-fil-A
Chick-fil-A
5200 Buffington Road
Atlanta, Georgia 30349-2998

LANE SUPPLY, INC.
120 FAIRVIEW
ARLINGTON, TX. 76010
(817) 261-9116

SEAL:

DEC 2 2 2017

CHICK-FIL-A
SAR CHEROKEE PLACE. FSR
115 CHEROKEE PLACE.
CARTERSVILLE, GA 30121

FSR# 0534

REVISION SCHEDULE		DESCRIPTION
NO.	DATE	

CONSULTANT PROJECT # **60005**

PRINTED FOR **Permit**

DATE **2017/12/19**

DRAWN BY **AFG**

CHECKED BY **RM**

Information contained on this drawing and in all digital files produced for above named project may not be reproduced in any manner without express written or verbal consent from authorized project representatives.

SHEET **CANOPY SECTIONS**

SHEET NUMBER **OMD-4**

E2 OF 5