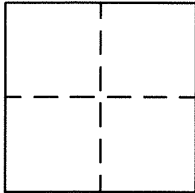


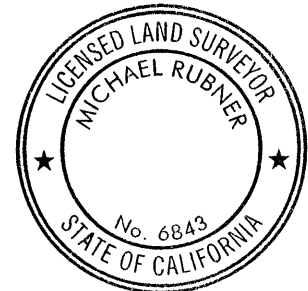
CORNER RECORD

AGENCY INDEX BK 121 PG 34DOCUMENT NUMBER CR12879CITY OF OAKLANDCOUNTY OF ALAMEDA

, CALIFORNIA

BRIEF LEGAL DESCRIPTION CITY MONUMENT FOUND AT INTERSECTION OF E. 17TH ST. / 4TH AVE.**CORNER TYPE****COORDINATES(OPTIONAL)**GOVERNMENT CORNER ☐ CONTROL ☒
MEANDER ☐ PROPERTY ☐
RANCHO ☐ OTHER ☐N. NA E. NA
ELEVATION NA
UNITS METRIC ☐ U.S. SURVEY FOOT ☒
HORIZONTAL DATUM NA
ZONE NADATE OF SURVEY JULY 19, 2018VERTICAL DATUM NA EPOCH DATE NA☐ COMPLIES WITH PUBLIC RESOURCES CODE §§ 8801-8819☐ COMPLIES WITH PUBLIC RESOURCES CODE §§ 8890-8902PLS ACT REF.: ☐ 8765(d) ☒ 8771 ☐ 8773 ☐ OTHER:CORNER/ ☒ LEFT AS FOUND ☐ ESTABLISHED ☐ REBUILT ☒ PRE-CONSTRUCTION
MONUMENT: ☐ FOUND AND TAGGED ☐ REESTABLISHED ☒ REFERENCED ☐ POST-CONSTRUCTIONNARRATIVE OF CORNER IDENTIFIED AND MONUMENT AS FOUND, SET, RESET, REPLACED, OR MOVED:
FOUND MONUMENT AT THE TEE INTERSECTION OF EAST 17TH STREET AND 4TH AVENUE.MONUMENTS SHOWN HEREON ARE TIED FOR PURPOSES TO PRESERVE THEIR LOCATION PRIOR TO
REPAVEMENT. NO ATTEMPT WAS MADE TO DETERMINE THE RELATIONSHIP TO PROPERTY,
CENTERLINE, OR RIGHT OF WAY LINES.**SURVEYOR'S STATEMENT**THIS CORNER RECORD WAS PREPARED BY ME OR UNDER MY DIRECTION
UNDER CONFORMANCE WITH THE PROFESSIONAL LAND SURVEYOR'SACT ON 4/17/2019SIGNED Ryan M. Sexton P.L.S. OR R.C.E. NO. 9177**COUNTY SURVEYOR'S STATEMENT**THIS CORNER RECORD WAS RECEIVED 19 MARCH 2019AND EXAMINED AND FILED 9 MAY 2019SIGNED Michael Rubner P.L.S. OR R.C.E. 6843TITLE COUNTY SURVEYOR

COUNTY SURVEYOR'S COMMENT



LEGEND

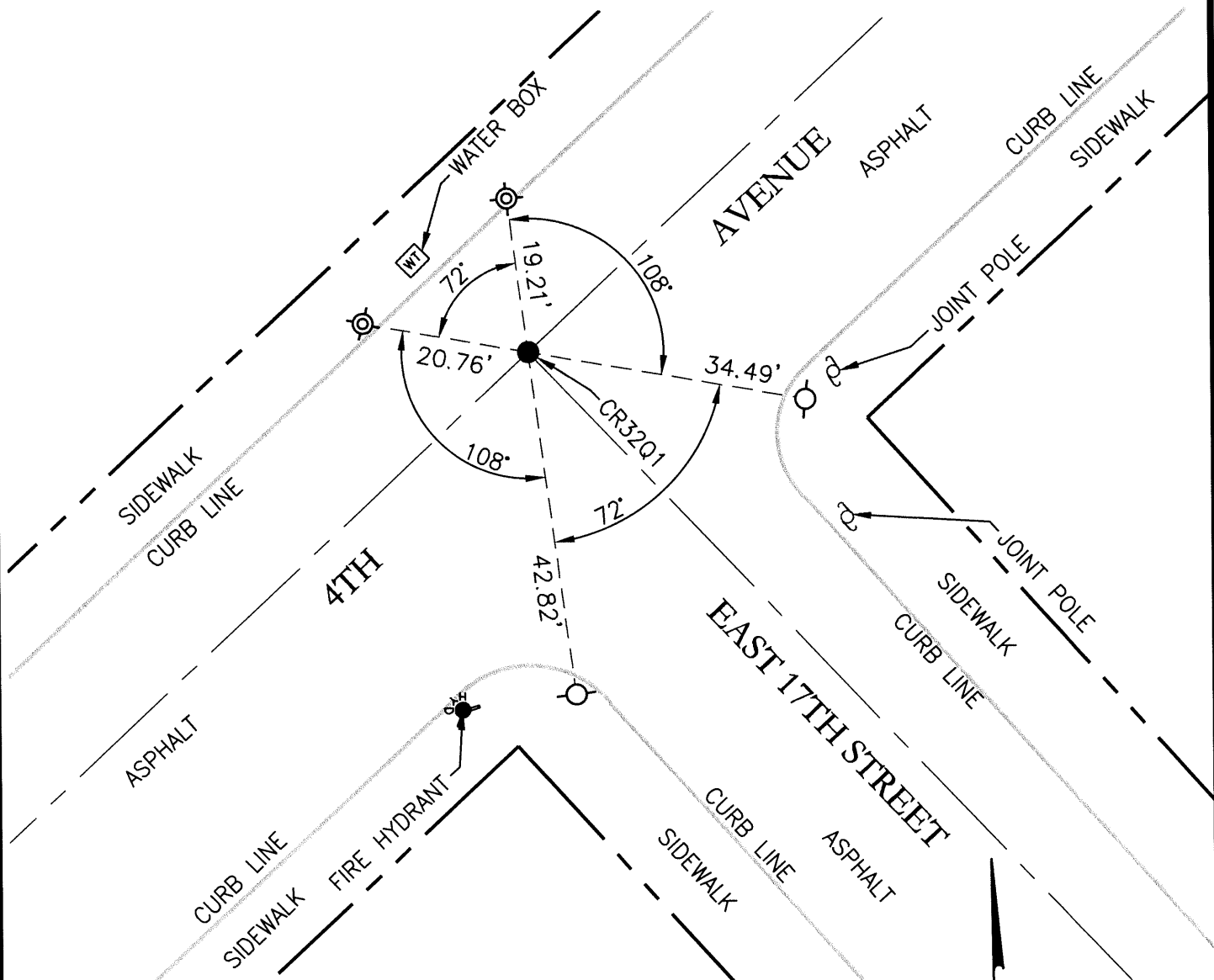
● FOUND PIN IN CONC IN STREET MON, PER CITY MONUMENT RECORD SHEET 186

⊗ SET MAG AND WASHER, STAMPED 'LS 9177'

○ SET CUT CROSS IN CONCRETE

AA##A# ALAMEDA COUNTY MONUMENT I.D.

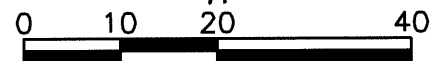
----- TIE LINE



WOOD RODGERS
BUILDING RELATIONSHIPS ONE PROJECT AT A TIME

4670 WILLOW ROAD, STE. 125 TEL 925.847.1556
PLEASANTON, CA 94588 FAX 925.847.1557

JOB#8530.014 CITY OF OAKLAND CITY-WIDE SURVEY



SCALE: 1" = 20'