

GENERAL ELECTRICAL NOTES

1.

THE ELECTRICAL CONTRACTOR SHALL COORDINATE ELECTRICAL WORK WITH OTHER TRADES. THE ARCHITECTURAL DRAWINGS SHALL TAKE PRECEDENCE OVER ALL OTHER DRAWINGS. DO NOT SCALE DISTANCES OFF THE ELECTRICAL DRAWINGS; USE ACTUAL BUILDING DIMENSIONS. OVERALL CASEWORK COMPONENT DIMENSIONING ON ELECTRICAL DETAILS ARE SHOWN FOR REFERENCE AND COORDINATION ONLY. SEE PROJECT MANUAL.

2.

ALL ELECTRICAL SYSTEMS SHALL BE TESTED FOR PROPER OPERATION. BALANCE ALL BRANCH CIRCUIT LOADS BETWEEN THE PHASES OF THE SYSTEM WITHIN 10% OF THE HIGHEST PHASE LOAD IN EACH PANEL BOARD.

3.

THE ELECTRICAL CONTRACTOR SHALL BE RESPONSIBLE FOR DE-ENERGIZING CIRCUITS IN DEMOLITION AREAS TO INSURE A SAFE CONDITION. ELECTRICAL DEVICES AND ASSOCIATED WIRING LOCATED WITHIN THE DEMOLITION AREA THAT WILL NO LONGER BE USED SHALL BE REMOVED AND PROPERLY DISPOSED OF AT CONTRACTORS EXPENSE UNLESS OTHERWISE NOTED.

4.

THE ELECTRICAL CONTRACTOR SHALL SCHEDULE ALL ELECTRICAL SYSTEM OUTAGES WITH THE GENERAL CONTRACTOR AND LANDLORD AT LEAST 24 HOURS IN ADVANCE. UNLESS APPROVED OTHERWISE ALL OUTAGES SHALL OCCUR BETWEEN 11:00PM AND 5:00AM.

5.

ELECTRICAL CONTRACTOR SHALL FURNISH AND INSTALL ALL NECESSARY CONDUIT AND J-BOXES TO SUPPORT A COMPLETE SECURITY, PHONE, POS AND DATA SYSTEMS. SEE MANAGER WORKSTATION AND BAR POINT OF SALE (POS) POWER/TELECOM/SECURITY DIAGRAM. COORDINATE ALL DEVICE LOCATIONS AND MOUNTING HEIGHTS WITH SECURITY VENDOR PRIOR TO ROUGH-IN. PROVIDE END-TO-END PULL STRINGS IN ALL CONDUITS. LABEL EACH END OF THE PULL STRING WITH CONDUIT SYSTEM ("SECURITY") AND DESTINATION ("CAFE", "FRONT BAR", ETC.). PROVIDE INSULATED BUSHINGS ON ALL STUBBED-UP AND EXPOSED CONDUIT ENDS.

6.

ELECTRICAL CONTRACTOR SHALL COORDINATE WITH THE GENERAL CONTRACTOR TO PATCH AND REPAIR ALL EXISTING WALLS, FLOORS, CEILINGS OR OTHER SURFACES IDENTIFIED TO REMAIN THAT MAY BECOME DAMAGED DURING THE COURSE OF WORK.

7.

EXPOSED/SURFACE MOUNTED CONDUITS SHALL ONLY BE ALLOWED WHERE NECESSARY IN EXPOSED CEILING AREAS. IF CONDUITS NEED TO BE SURFACE MOUNTED TO WALLS, COORDINATE WITH STARBUCKS CONSTRUCTION MANAGER FOR APPROVAL.

8.

VERIFY LOCATION OF ALL OUTLETS AND SWITCHES WITH ARCHITECTURAL DRAWINGS, INTERIOR DETAILS, FINISH SCHEDULES, GENERAL CONTRACTOR, EQUIPMENT VENDORS, STARBUCKS AND EXISTING SITE CONDITIONS. VERIFY FINAL DOOR HINGE LOCATION PRIOR TO SWITCH INSTALLATION AND ADJUST SWITCH LOCATION IF NEEDED. DO NOT MOUNT RECEPTACLES/SWITCHES IN LOCATIONS THAT WOULD CONFLICT WITH MIRRORS, SEAMS OF WALLS, WAINSCOTS, TILE TRANSITIONS, ETC...

GENERAL NOTES

SCOPE

THE INTENT OF THE DRAWINGS AND PROJECT MANUAL IS TO PROVIDE A COMPLETE AND FULLY OPERATIONAL ELECTRICAL SYSTEM. THE ELECTRICAL CONTRACTOR SHALL FURNISH AND INSTALL ALL LABOR, MATERIAL, AND EQUIPMENT NECESSARY TO COMPLETE THE ELECTRICAL WORK.

SITE EXAMINATION

THE ELECTRICAL CONTRACTOR SHALL THOROUGHLY EXAMINE ALL AREAS WHERE EQUIPMENT, CONDUIT, AND WIRING WILL BE INSTALLED AND WILL REPORT ANY CONDITION THAT, IN HIS OPINION, PREVENTS THE PROPER INSTALLATION OF THE ELECTRICAL WORK.

STANDARDS

EQUIPMENT AND MATERIALS SHALL CONFORM WITH APPROPRIATE PROVISIONS OF CSA, ULC, NEC, ASTM, UL, ETL, NEMA, ANSI, AS APPLICABLE TO EACH INDIVIDUAL UNIT OR ASSEMBLY.

CODES

ALL WORK SHALL BE PERFORMED IN STRICT ACCORDANCE WITH ALL APPLICABLE PROVINCIAL AND LOCAL CODES AND ORDINANCES. IN CASE OF CONFLICT BETWEEN THE DRAWINGS AND SPECIFICATIONS AND THE CODES, THE HIGHEST STANDARD SHALL APPLY. ELECTRICAL CONTRACTOR SHALL SATISFY CODE REQUIREMENTS AS A MINIMUM STANDARD WITHOUT ANY EXTRA COST TO STARBUCKS.

PERMITS AND FEES

THE ELECTRICAL CONTRACTOR SHALL PROCURE AND PAY FOR ALL PERMITS, FEES, AND INSPECTIONS NECESSARY TO COMPLETE THE ELECTRICAL WORK.

WARRANTY

THE ELECTRICAL CONTRACTOR SHALL UNCONDITIONALLY WARRANT ALL WORK TO BE FREE OF DEFECTS IN MATERIAL AND WORKMANSHIP FOR A PERIOD OF ONE (1) YEAR FROM THE DATE OF FINAL ACCEPTANCE BY STARBUCKS AND WILL REPAIR OR REPLACE ANY DEFECTIVE WORK PROMPTLY AND WITHOUT CHARGE AND RESTORE ANY OTHER EXISTING WORK DAMAGED IN THE COURSE OF REPAIRING DEFECTIVE MATERIALS AND WORKMANSHIP.

SYSTEM COMMISSIONING

CONTRACTOR RESPONSIBILITIES FOR BUILDING COMMISSIONING

CONTRACTOR SHALL PROVIDE SUPPORT AND WORK AS SPECIFIED, NEEDED AND REQUIRED TO CONDUCT AND FACILITATE STARBUCKS STAFF BUILDING COMMISSIONING EFFORTS. THIS WORK WILL BE COMPRISED OF THREE DISTINCT EFFORTS:

1)

SUPPORT STARBUCKS COMMISSIONING AGENT (CXA) DURING INSTALLATION VERIFICATION AND CORRECT DISCLOSED DEFICIENCIES;

2)

PERFORM TESTING, ADJUSTING, BALANCING AND SYSTEM STARTUP AND SUPPORT FUNCTIONAL PERFORMANCE TESTING BY STARBUCKS CXA;

3)

CORRECT DEFICIENCIES DISCLOSED BY FUNCTIONAL PERFORMANCE TESTING AND SUBMIT REPORTS. CONTRACTOR SHALL PERFORM AND PROVIDE THE FOLLOWING:

A.

SYSTEMS SUBJECT TO COMMISSIONING MAY INCLUDE, BUT ARE NOT LIMITED TO DOMESTIC HOT WATER GENERATION, HVAC SYSTEMS, ROOFTOP UNITS, EXHAUST FANS, HVAC CONTROLS, LIGHTING CONTROLS, AIR CURTAINS, BUILT-IN REFRIGERATION EQUIPMENT, AND RENEWABLE ENERGY SYSTEMS.

B.

CONTRACTOR SHALL INCLUDE COMMISSIONING ACTIVITIES IN PROJECT SCHEDULE AND SHOW INTERVALS FOR PERFORMANCE OF WORK FOR WHICH CONTRACTOR IS RESPONSIBLE AND INTERVALS FOR WORK PERFORMED BY STARBUCKS CXA. CONTRACTOR SHALL SHOW RESOURCES FOR PERFORMING ALL WORK RELATED TO COMMISSIONING ACTIVITIES ON A LINE ITEM IN THE SCHEDULE OF VALUES.

C.

CONTRACTOR SHALL INSTALL EQUIPMENT IN ACCORDANCE WITH THE MANUFACTURER'S REQUIREMENTS AND ALL CONTRACT DOCUMENTS. ENSURE THAT ALL EQUIPMENT IS INSTALLED TOTALLY COMPLETE, AND ACCESSIBLE TO STARBUCKS CXA FOR INSTALLATION VERIFICATION AND FUNCTIONAL PERFORMANCE TESTING PRIOR TO THE SCHEDULED START OF INSTALLATION VERIFICATION.

D.

INSTALLATION VERIFICATION SHALL BE PERFORMED BY STARBUCKS CXA. CONTRACTOR SHALL SUPPORT STARBUCKS CXA INSTALLATION VERIFICATION EFFORTS AS NECESSARY. PROVIDE ALL ACCESS AND EQUIPMENT NECESSARY FOR STARBUCKS STAFF TO VERIFY THAT THE EQUIPMENT IS INSTALLED CORRECTLY.

E.

CONTRACTOR SHALL BE READILY AVAILABLE DURING INSTALLATION VERIFICATION TO CORRECT ANY DEFICIENCIES OR DEFECTS DISCLOSED BY THE INSTALLATION VERIFICATION PROCESS. CORRECTIONS SHALL BE MADE IN A TIMELY MANNER WITHOUT DISRUPTION OF THE CONSTRUCTION SCHEDULE.

F.

ALL HVAC, EXHAUST FAN, AND AIR CURTAIN EQUIPMENT SHALL BE TESTED, ADJUSTED AND BALANCED BY THE CONTRACTOR'S TESTING, ADJUSTING AND BALANCE AGENT( SEE TESTING, ADJUSTING AND BALANCING) AFTER THE SYSTEM IS VERIFIED TO BE COMPLETE AND CORRECT BY STARBUCKS CXA, IN ACCORDANCE WITH THE REQUIREMENTS OF THESE DOCUMENTS. ALL HVAC CONTROL SYSTEMS SHALL BE TESTED TO ENSURE THAT CONTROL DEVICES, COMPONENTS, EQUIPMENT AND SYSTEMS ARE CALIBRATED, ADJUSTED AND OPERATE IN ACCORDANCE WITH THESE PLANS AND PROJECT MANUAL. SEQUENCES OF OPERATION SHALL BE TESTED TO ENSURE THAT THEY OPERATE IN ACCORDANCE WITH THE CONTRACT REQUIREMENTS. DELIVERABLES: PRELIMINARY, WRITTEN TESTING AND AIR BALANCE REPORT CONFORMING TO THE REQUIREMENTS SPECIFIED HEREIN, DOCUMENTING THE INFORMATION SPECIFIED, ETC. TO THE STARBUCKS CXA IMMEDIATELY UPON COMPLETION OF THE WORK.

G.

CONTRACTOR SHALL INFORM STARBUCKS CXA WHEN EQUIPMENT IS READY FOR FUNCTIONAL PERFORMANCE TESTING. ALL EQUIPMENT SHALL BE READY FOR FUNCTIONAL PERFORMANCE TESTING PRIOR TO STARTING TESTING. CONTRACTOR SHALL OPERATE EQUIPMENT FOR STARBUCKS CXA AND VERIFY BY DEMONSTRATION THE CORRECT OPERATION OF EQUIPMENT, RESPONSE OF SENSORS, AND PROPER EXECUTION OF HVAC CONTROL AND LIGHTING SEQUENCES; INCLUDING BUT NOT LIMITED TO, AIR MOVEMENT, TEMPERATURE, SOUND, AND CONTROL RESPONSE. PROVIDE ANY SECURITY ACCESS, HARDWARE, SOFTWARE, OR OTHER SUPPORT AS NEEDED FOR THE STARBUCKS CXA TO EFFICIENTLY WITNESS AND DOCUMENT ALL EQUIPMENT TESTING. STARBUCKS CXA WILL RECORD THE EQUIPMENT OPERATION AND RESPONSE TO TESTING SEQUENCES AND PREPARE A LIST OF ANY DEFICIENCIES DISCLOSED BY THE FUNCTIONAL PERFORMANCE TESTS FOR CORRECTION BY THE CONTRACTOR. EQUIPMENT INCLUDES, BUT IS NOT LIMITED TO, AIR HANDLING UNITS, ROOFTOP AND SPLIT TYPE, CONDENSING UNITS, EXHAUST FANS, LIGHTING CONTROLS, ETC. DELIVERABLES: PROVIDE COMPLETED COPIES OF ALL START UP REPORTS, FILLED OUT ON THE MANUFACTURER'S FORMS, TO THE STARBUCKS CXA.

H.

CONTRACTOR IS RESPONSIBLE FOR CORRECTING ANY ISSUES OR DEFICIENCIES DISCLOSED DURING THE FUNCTIONAL PERFORMANCE TESTING PROCESS. CORRECTIONS SHOULD BE MADE IN A TIMELY MANNER WITHOUT DISRUPTION TO THE SYSTEM AND CONSTRUCTION SCHEDULE.

I.

CONTRACTOR SHALL BE READILY AVAILABLE FOR ANY RE-TESTING OF EQUIPMENT DEEMED NECESSARY BY STARBUCKS CXA DURING INSTALLATION VERIFICATION AND FUNCTIONAL PERFORMANCE TESTING. CONTRACTOR IS RESPONSIBLE FOR CORRECTING ANY ISSUES OR DEFICIENCIES FOUND IN THE SYSTEM DURING ANY AND ALL RE-TESTING. CORRECTIONS SHOULD BE MADE IN A TIMELY MANNER WITHOUT DISRUPTION TO THE SYSTEM AND CONSTRUCTION SCHEDULE. DELIVERABLES: FINAL BALANCE REPORT, DEFICIENCIES LIST NOTING CORRECTIVE ACTIONS PERFORMED BY CONTRACTOR IN RESPONSE TO INSTALLATION VERIFICATION AND FUNCTIONAL PERFORMANCE TEST RESULTS.

J.

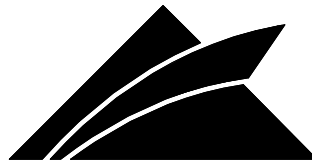
CONSTRUCTION AND POST CONSTRUCTION TESTING: ADDITIONAL TESTING MAY BE REQUIRED AND OTHER PROCESSES THAT MAY OCCUR OUT OF SEQUENCE WITH COMMISSIONING SERVICE. CONTRACTOR SHALL CONDUCT, DOCUMENT, SUPPORT AND SCHEDULE THIS TESTING AS DIRECTED BY STARBUCKS CXA.

ABBREVIATIONS

AF	ABOVE FINISHED FLOOR
AHJ	AUTHORITIES HAVING JURISDICTION
APPROX	APPROXIMATE
BLDG	BUILDING
CKT	CIRCUIT
CLG	CEILING
CM	STARBUCKS CONSTRUCTION MANAGER
CONST	CONSTRUCTION
CW	COLD WATER
CXA	COMMISSIONING AGENT
DEG	DEGREES
DL	LIGHTS WITHIN DAYLIGHT ZONE
DM	STARBUCKS DESIGN MANAGER
DN	DOWN
DTL	DETAIL
DWG(S)	DRAWING(S)
EA	EACH
EC	ELECTRICAL CONTRACTOR
ECP	EQUIPMENT CONTROL PAC
EG	EXHAUST GRILLE
ELEC	ELECTRICAL
EM	EMERGENCY
EMS	ENERGY MANAGEMENT SYSTEM
EXIST	EXISTING
EXT	EXTERIOR
F&I	FURNISH & INSTALL
FOIC	FURNISHED BY OWNER, INSTALLED BY CONTRACTOR
FOIO	FURNISHED BY OWNER, INSTALLED BY OWNER
FLR	FLOOR
FT	FOOT/FEET
GC	GENERAL CONTRACTOR
GFCI	GROUND FAULT CIRCUIT INTERRUPTER
GND	GROUND
HR	HOURL
HVAC	HEATING, VENTILATION, AIR CONDITIONING
HW	HOT WATER
LCP	LIGHTING CONTROL PANEL
LL	LANDLORD
LS	LIGHT SENSOR PHOTOCCELL
LV	LOW VOLTAGE
MAX	MAXIMUM
MC	MECHANICAL CONTRACTOR
MDP	MAIN DISTRIBUTION PANEL
MECH	MECHANICAL
MEP	MECHANICAL, ELECTRICAL, AND PLUMBING
MFG	MANUFACTURER
MIN	MINIMUM
NL	NIGHTLIGHT
NTS	NOT TO SCALE
OC	OVERCURRENT PROTECTION
REF	REFERENCE
REQ(D)	REQUIRE(D)
REV	REVISION
SF	SQUARE FEET
SHT	SHEET
SPECS	SPECIFICATION(S)
SST	STAINLESS STEEL
TEL	TELEPHONE
TEMP	TEMPORARY
TYP	TYPICAL
UC	UNDER COUNTER
UNO	UNLESS NOTED OTHERWISE
WH	WATER HEATER
WP	WEATHER PROOF

ELECTRICAL SYMBOLS LEGEND

⌋	JUNCTION BOX
⌋	SWITCH
▼	TELEPHONE
⌋	THERMOSTAT
⌋	RECEPTACLE: DATA
⌋	RECEPTACLE: DUPLEX
⌋	RECEPTACLE: DUPLEX - INDIVIDUAL BRANCH CIRCUIT
⌋	RECEPTACLE: HIGH VOLTAGE
⌋	RECEPTACLE: QUAD
⌋	RECEPTACLE: QUAD - INDIVIDUAL BRANCH CIRCUIT
⌋	RECEPTACLE: FLOOR DUPLEX
⌋	DUCT SMOKE DETECTOR



GPD Engineering and Architecture  
Professional Corporation - C3879

520 S. MAIN ST., SUITE 2351  
AKRON, OH 44311  
PHONE: 330.572.2100  
FAX: 330.572.2101

Copyright: GPD Engineering and Architecture Professional Corporation 2020

DESCRIPTION

DATE

REV

WHITSETT  
6405 BURLINGTON RD  
WHITSETT, NC 27377

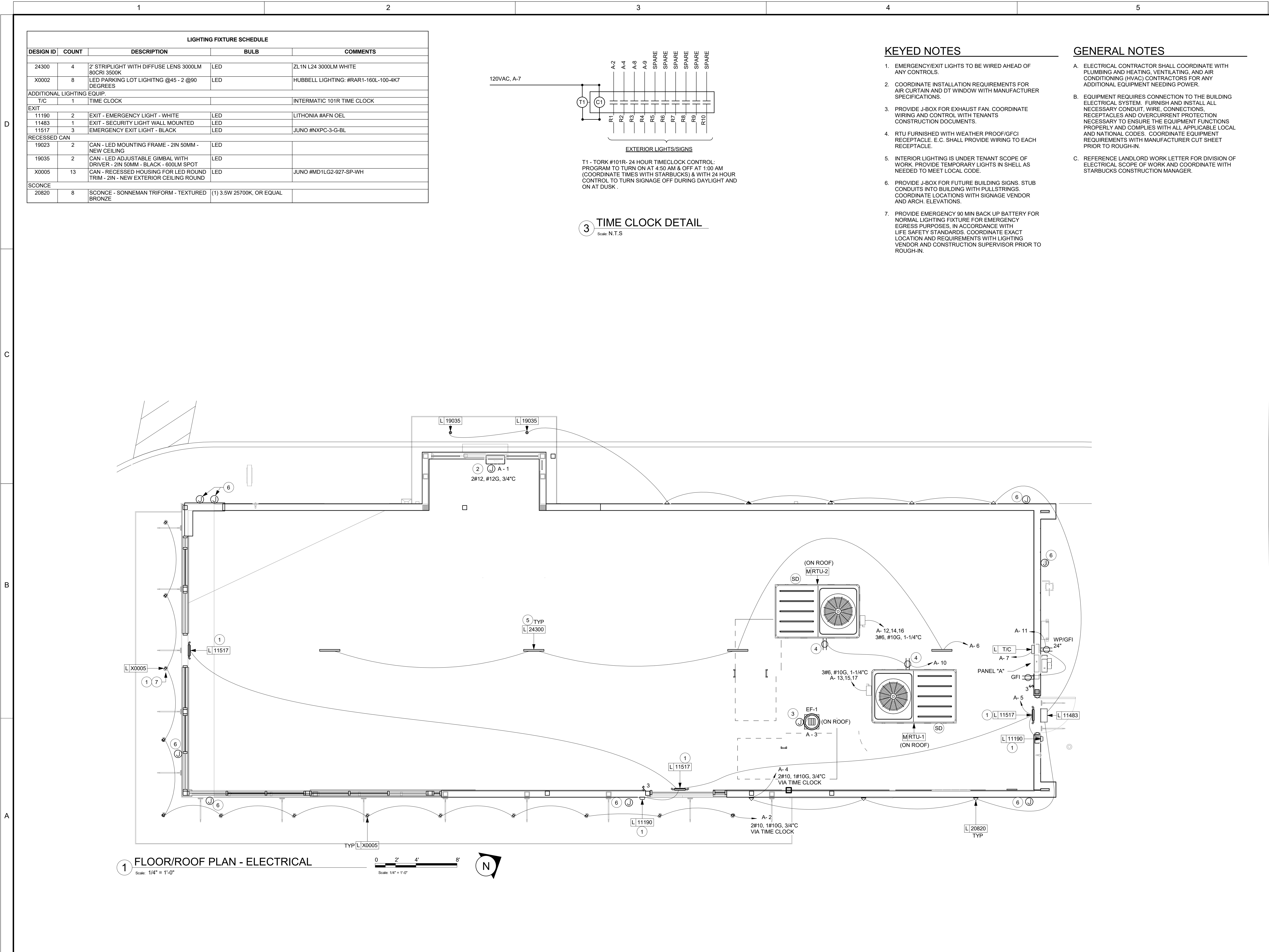
ELECTRICAL NOTES

	DATE
PERMIT	--/------
BID	--/------
CONSTRUCTION	--/------
RECORD	--/------
PROJECT MANAGER	DESIGNER
AK	AS

JOB NO.  
2020379.16

E1000





[illegible]

- |              | DATE      |
|--------------|-----------|
| PERMIT       | --/------ |
| BID          | --/------ |
| CONSTRUCTION | --/------ |
| RECORD       | --/------ |

JOB NO.  
2020379.16

Scale: NTS