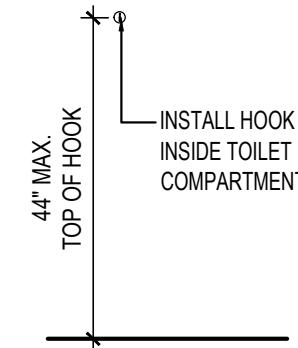


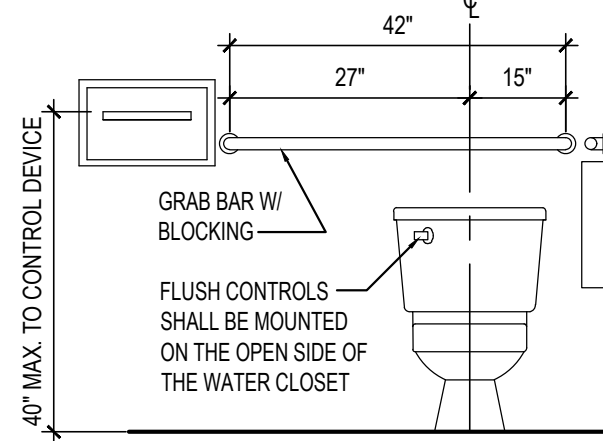
RESTROOM ACCESSIBLE SIGNAGE



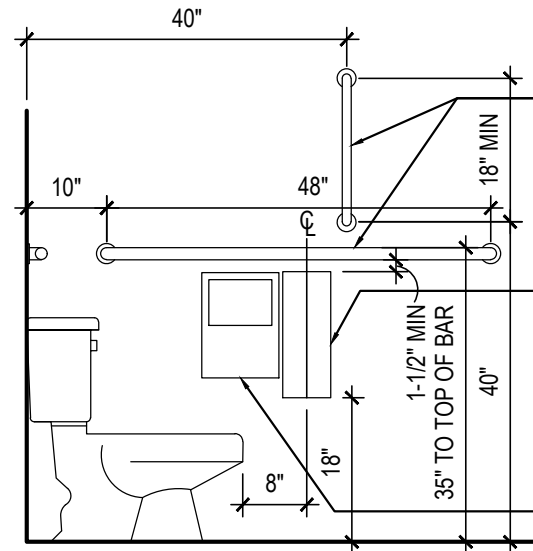
CLOTHES HOOK INSTALLATION



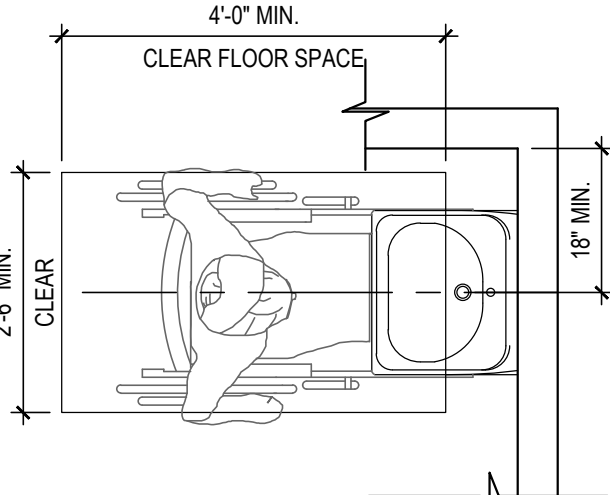
SOAP DISPENSER



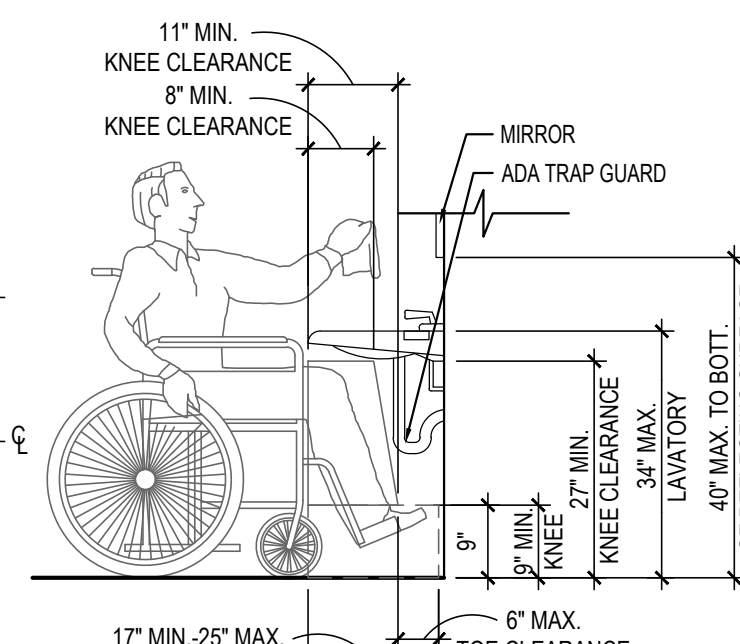
FLOOR MOUNTED TOILET-FRONT VIEW



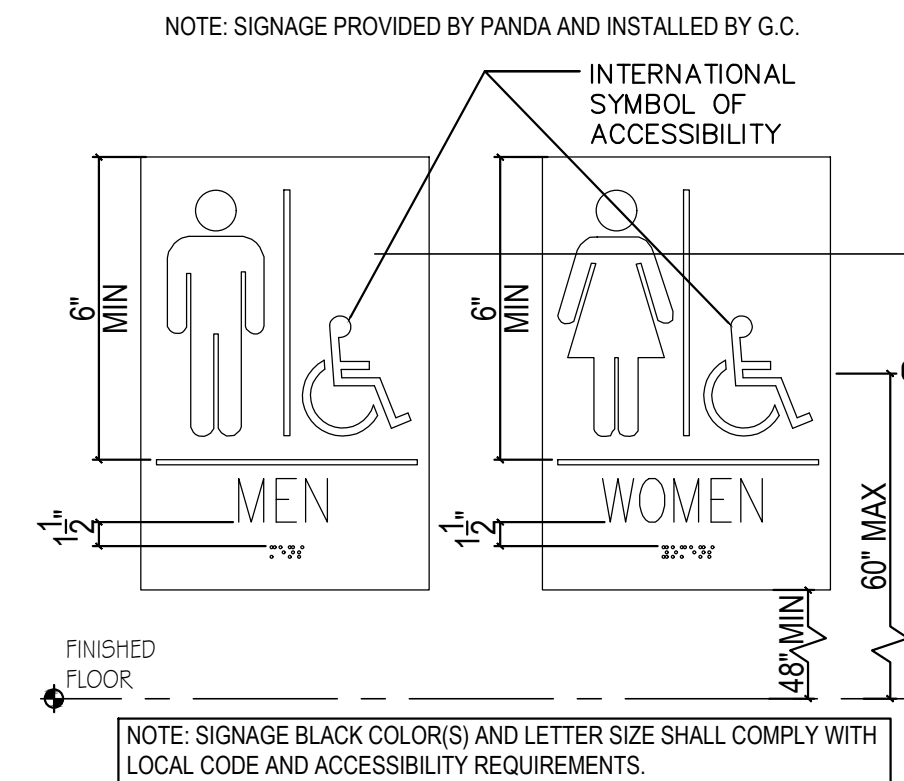
FLOOR MOUNTED TOILET-SIDE VIEW



LAVATORY - FLOOR CLEARANCE



LAVATORY - MOUNTING HEIGHTS



RESTROOM DOOR SIGNS

## STANDARD ACCESSIBLE MOUNTING HEIGHTS AND CLEARANCES

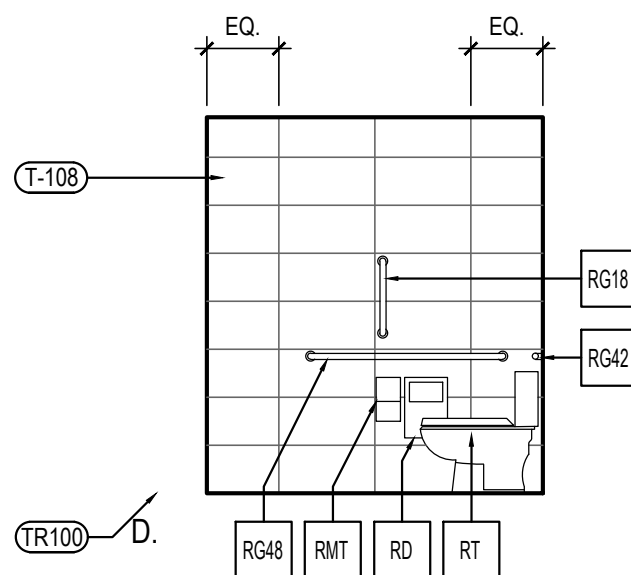
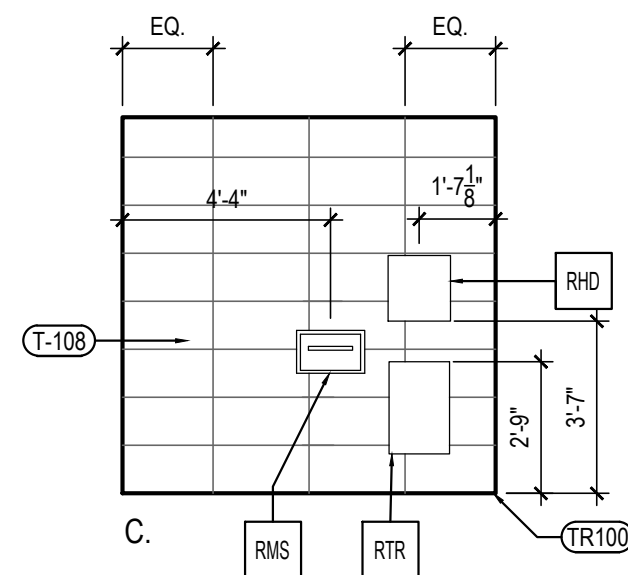
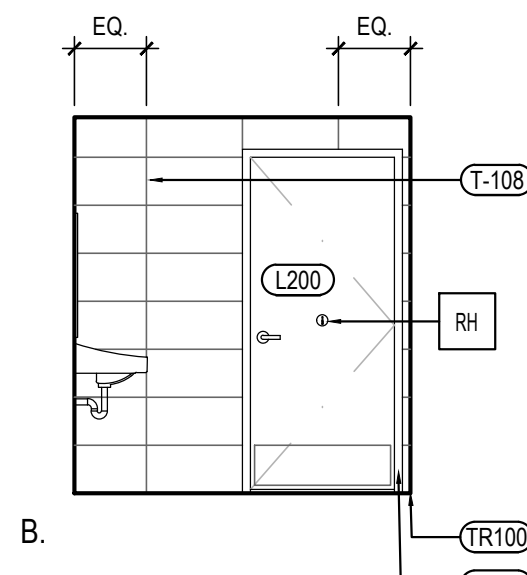
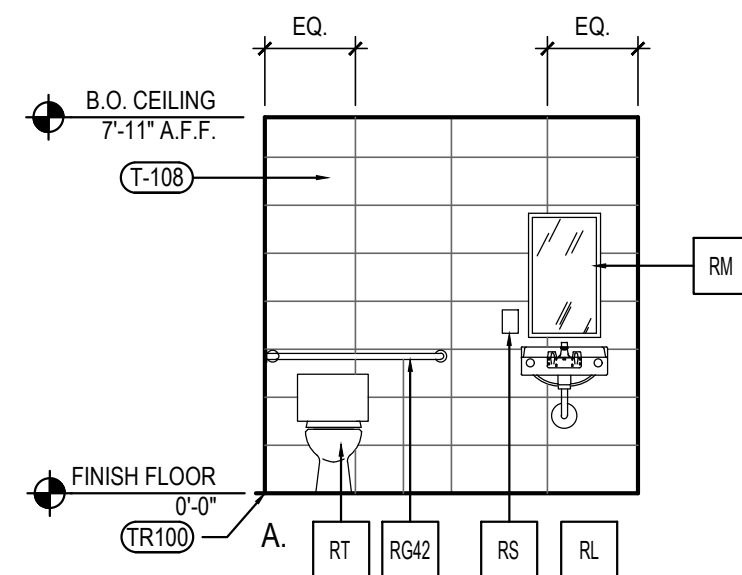
4

Scale= NTS A-503

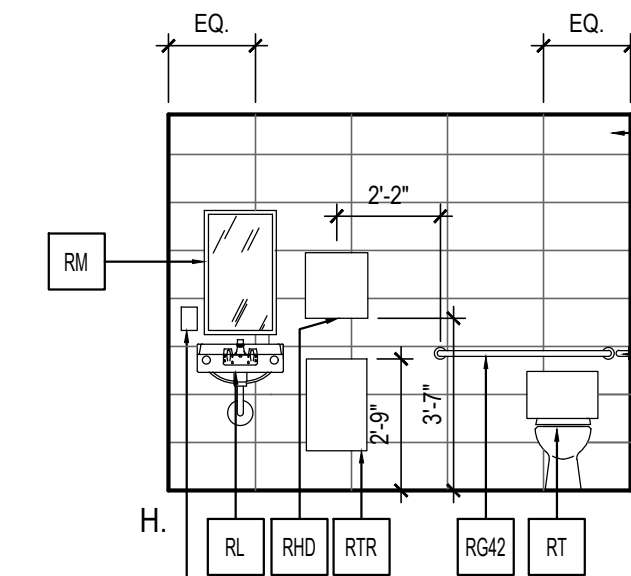
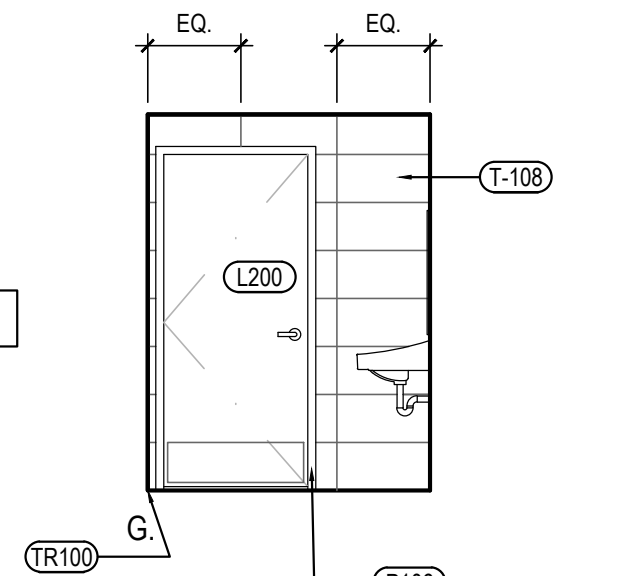
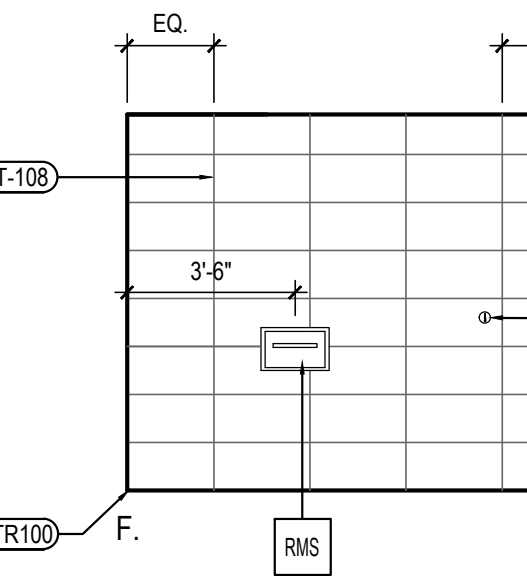
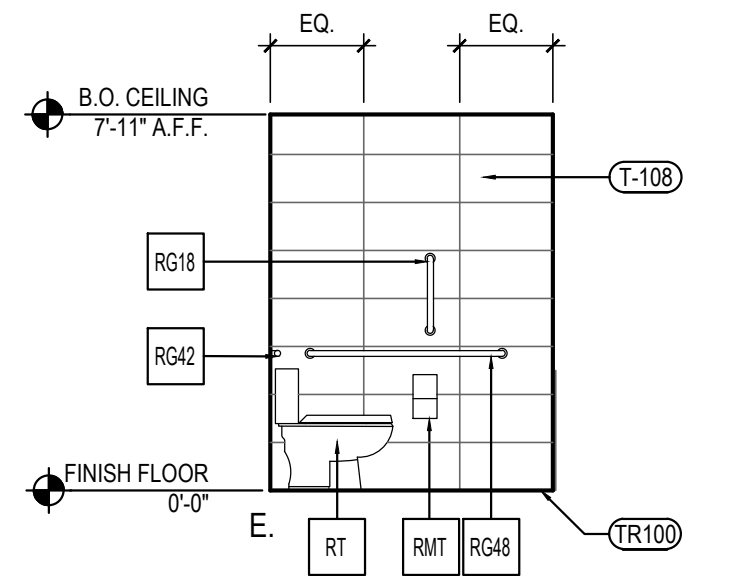
## RESTROOM DOOR SIGNS

3

Scale= 1" = 1'-0" A-503



WOMEN'S RESTROOM

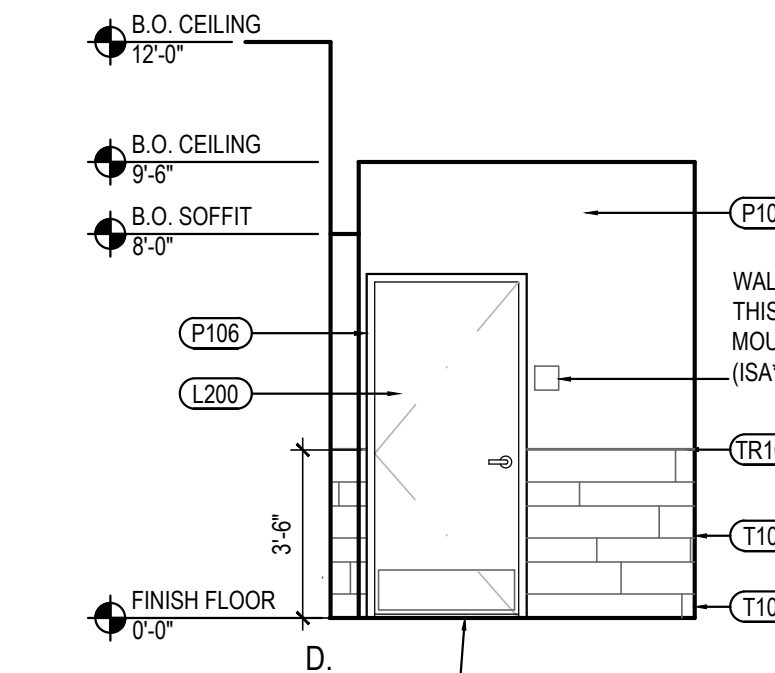
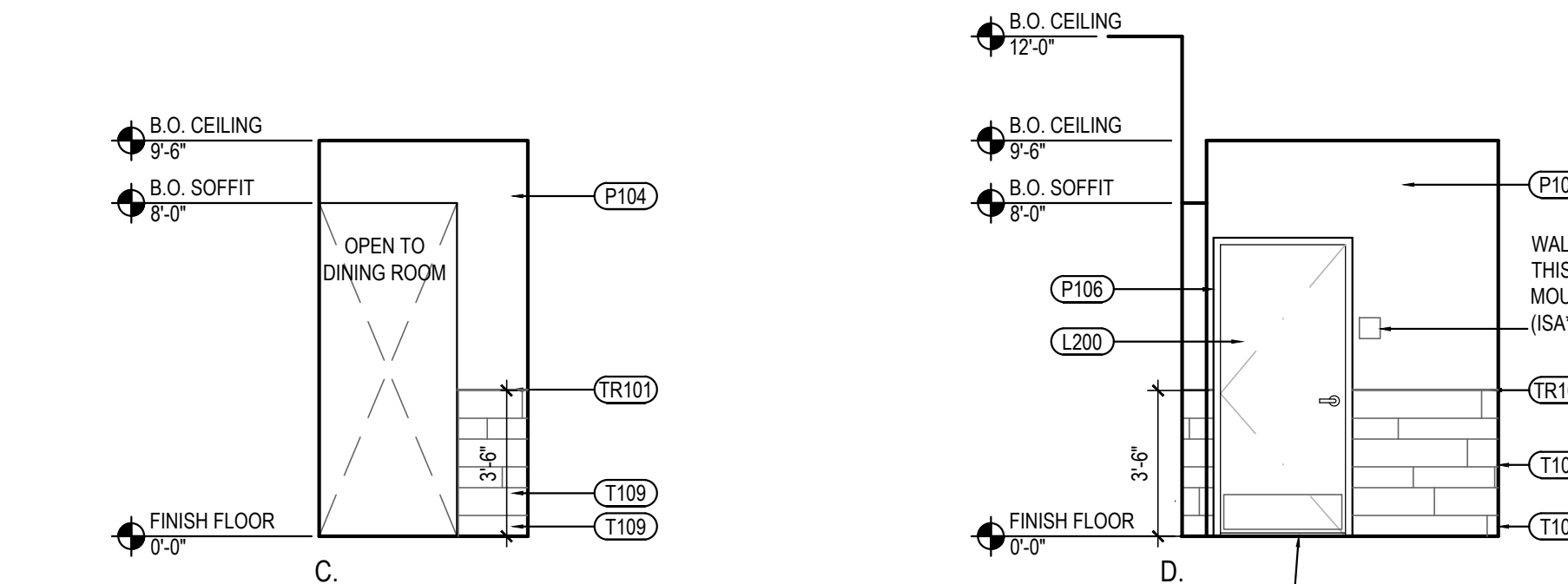
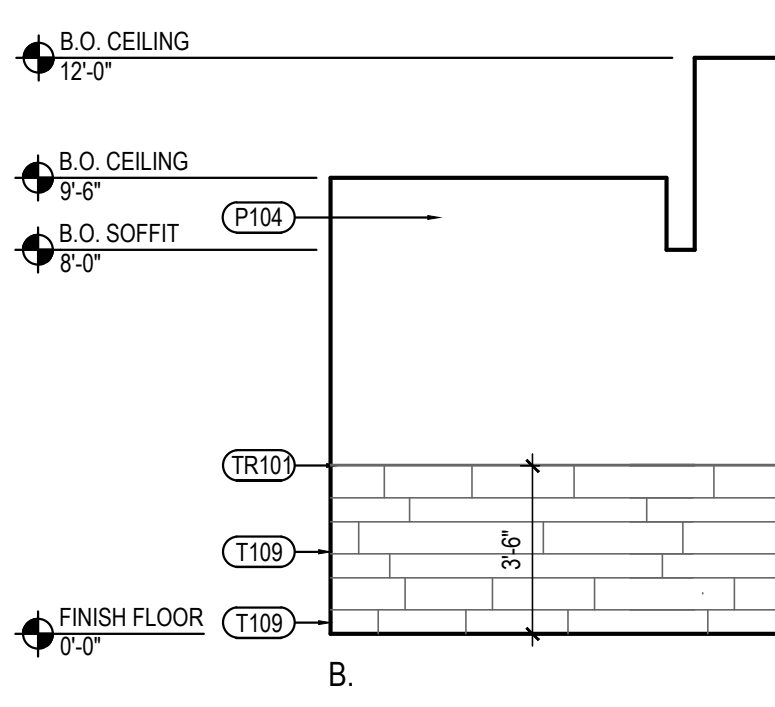
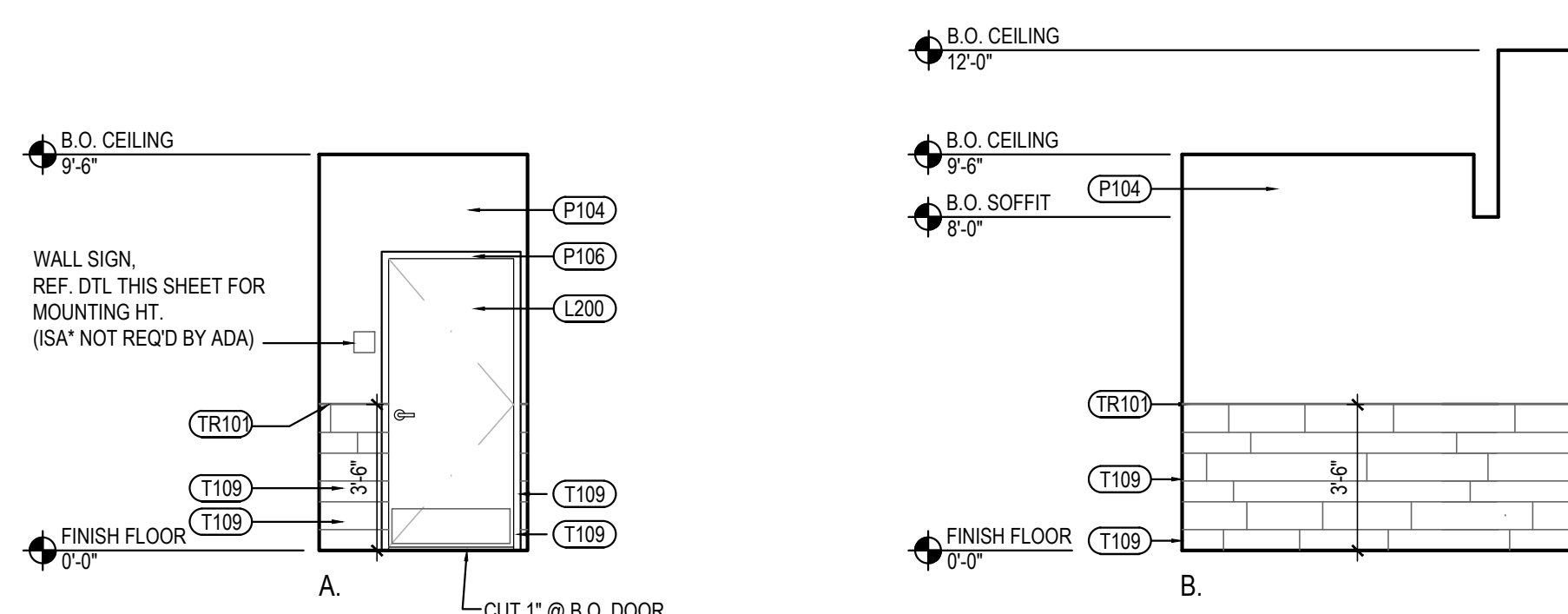


MEN'S RESTROOM

## RESTROOM ELEVATIONS

2

Scale= 1/4" = 1'-0" A-503



## RESTROOM VESTIBULE ELEVATIONS

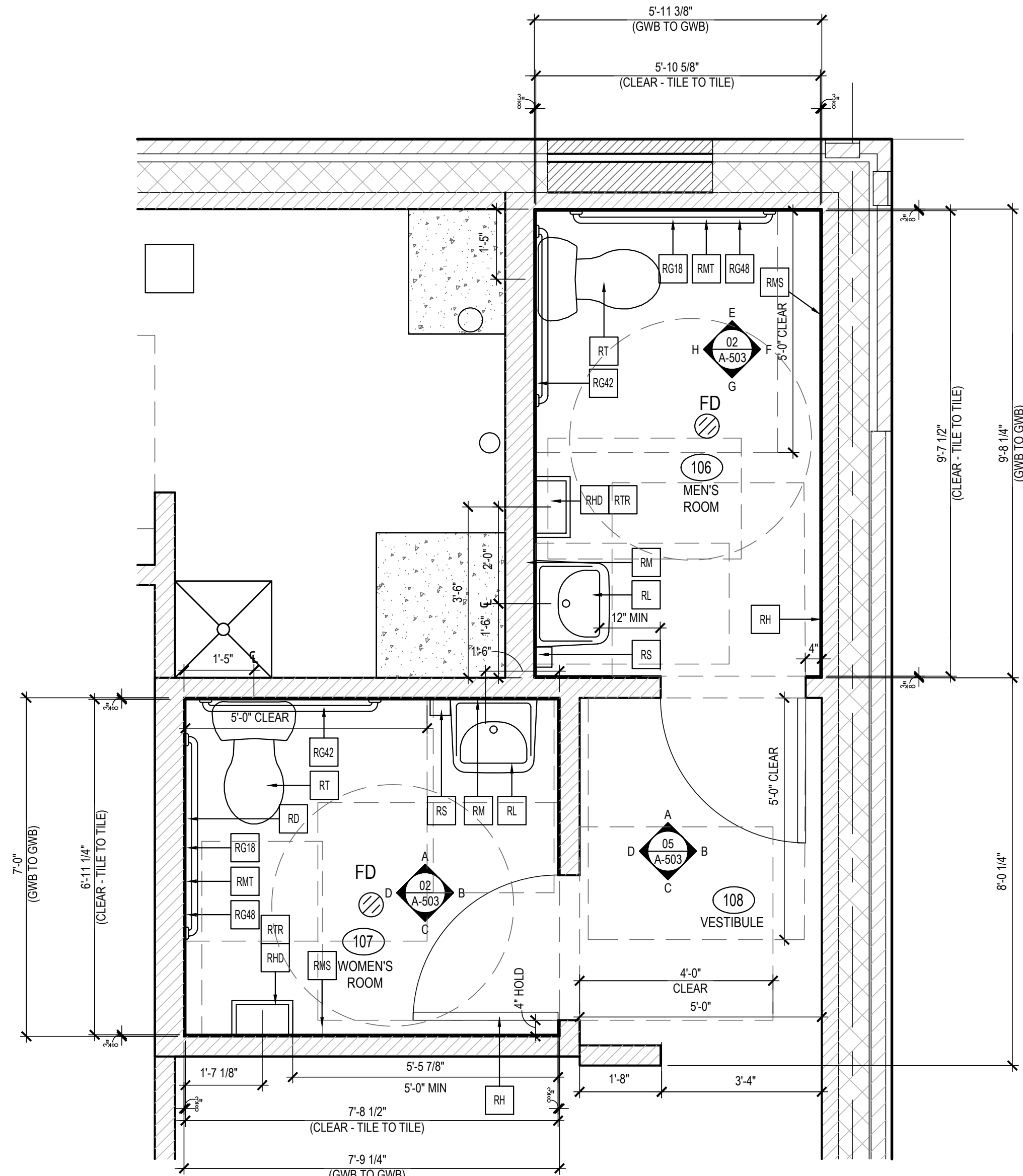
5

Scale= 1/4" = 1'-0" A-503

## TOILET ACCESSORY SCHEDULE

| NO   | DESCRIPTION  |
|------|--|
| RG42 | BOBRICK GRAB BAR, 42" LONG<br>B-6806 1 1/2" SATIN FINISH; FURNISHED BY LOCKNET, INSTALLED BY G.C.  |
| RG48 | BOBRICK GRAB BAR, 48" LONG<br>B-6806 1 1/2" SATIN FINISH; FURNISHED BY LOCKNET, INSTALLED BY G.C.  |
| RG18 | BOBRICK GRAB BAR, 18" LONG<br>B-6806 1 1/2" SATIN FINISH; FURNISHED BY LOCKNET, INSTALLED BY G.C.  |
| RM   | BOBRICK CHANNEL FRAME MIRROR<br>B-165 (1836) 18"X36" STAINLESS STEEL CHANNEL FRAME<br>FURNISHED BY LOCKNET, INSTALLED BY G.C.<br>MOUNT 40" MAX. TO BOTTOM OF REFLECTING SURFACE                      |
| RS   | SOAP DISPENSER<br>(BY VENDOR)  |
| RMS  | BOBRICK SEAT COVER DISPENSER<br>B-221 STAINLESS STEEL, SATIN FINISH<br>FURNISHED BY LOCKNET, INSTALLED BY G.C.   |
| RTR  | BOBRICK SURFACE MOUNTED TRASH RECEPTACLE<br>MODEL # B-277; FURNISHED BY LOCKNET, INSTALLED BY G.C.   |
| RHD  | PAPER TOWEL DISPENSER<br>FURNISHED BY PANDA EXPRESS, INSTALLED BY G.C.   |
| RMT  | BOBRICK MULTI-ROLL TOILET TISSUE DISPENSER<br>B-2888 STAINLESS STEEL, SATIN FINISH<br>FURNISHED BY LOCKNET, INSTALLED BY G.C.  |
| RT   | AMERICAN STANDARD CADET RIGHT HEIGHT ELONGATED TOILET<br>2467.016 TLT, 4142.600 TANK, AMERICAN STANDARD #5321.110 SEAT,<br>COLOR: WHITE. TRIP TO BE ON OPEN SIDE.<br>FURNISHED AND INSTALLED BY G.C. |
| RL   | ZURN WALL HUNG LAVATORY Z5344, 20" X 18" VITREOUS CHINA, WITH<br>4" CENTER FAUCET HOLES & ZURN Z-1231 CONCEALED ARM CARRIER<br>FURNISHED AND INSTALLED BY G.C.                                       |
| RD   | BOBRICK SURFACE-MOUNTED SANITARY NAPKIN DISPOSAL<br>B-254 STAINLESS STEEL, SATIN FINISH<br>FURNISHED BY LOCKNET, INSTALLED BY G.C.   |
| RH   | BOBRICK SURFACE-MOUNTED CLOTHES HOOK AND BUMPER<br>B-233 SOLID ALUMINUM CASTING, MATTE FINISH,<br>INSIDE OF RESTROOM DOORS<br>FURNISHED BY LOCKNET, INSTALLED BY G.C.                                |

\* INSULATE ALL PIPES (TRAP & HOT WATER) AT ACCESSIBLE LAVATORIES.



## ENLARGED RESTROOM PLANS

1

Scale= 1/2" = 1'-0" A-503



PANDA EXPRESS, INC.  
1683 Walnut Grove Ave.  
Rosemead, California  
91770  
Telephone: 626.799.9898  
Facsimile: 626.372.8288

All ideas, designs, arrangement and plans indicated or represented by this drawing are the property of Panda Express Inc. and were created for use on this specific project. None of these ideas, designs, arrangements or plans may be used by or disclosed to any person, firm, or corporation without the written permission of Panda Express Inc.

### REVISIONS:

|  |  |
|--|--|
|  |  |
|  |  |
|  |  |
|  |  |
|  |  |
|  |  |
|  |  |
|  |  |
|  |  |
|  |  |

### ISSUE DATE:

|                 |            |
|-----------------|------------|
| PEER REVIEW     | 01-27-2020 |
| PR RESPONSE 1   | 02-21-2020 |
| BUILDING PERMIT | 03-11-2020 |

DRAWN BY: CP

PANDA PROJECT #: D7446  
ARCH PROJECT #: JCDT19-0314

**NORR**  
ARCHITECTS ENGINEERS PLANNERS

**PANDA EXPRESS**  
GREENBRIAR TOWN CENTER,  
13059 LEE JACKSON MEMORIAL HWY  
FAIRFAX, VA 22033

# A-503

ENLARGED RESTROOM  
PLANS AND ELEVATIONS