



PANDA EXPRESS, INC.
1683 Walnut Grove Ave.
Rosemead, California
91770
Telephone: 626.799.9898
Facsimile: 626.372.8288

All ideas, designs, arrangement and plans indicated or represented by this drawing are the property of Panda Express Inc. and were created for use on this specific project. None of these ideas, designs, arrangements or plans may be used by or disclosed to any person, firm, or corporation without the written permission of Panda Express Inc.

REVISIONS:		
ISSUE DATE:		
	STATE PERMIT	06.07.21

DRAWN BY: CSW

PANDA PROJECT #: D8060
ARCH PROJECT #: JCDT20-0240

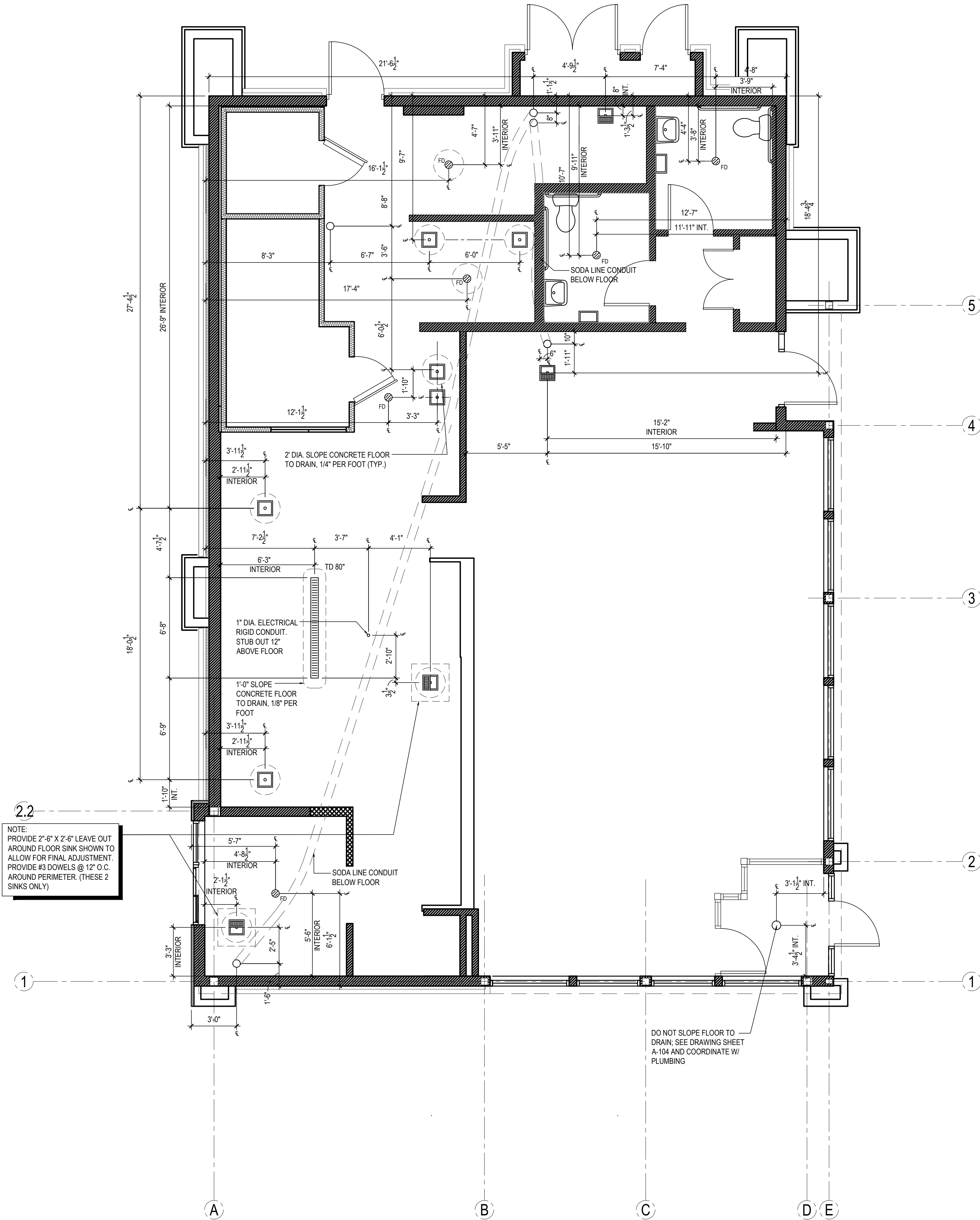


PANDA EXPRESS
TRUE WARM & WELCOME
390 W Spring Mill Pointe Dr.
Westfield, IN 46074

A-102

ROUGH - IN PLUMBING PLAN

TRUE WARM & WELCOME 2300 R5



2.2
NOTE:
PROVIDE 2'-6" X 2'-6" LEAVE OUT
AROUND FLOOR SINK SHOWN TO
ALLOW FOR FINAL ADJUSTMENT.
PROVIDE #3 DOWELS @ 12" O.C.
AROUND PERIMETER. (THESE 2
SINKS ONLY)

DO NOT SLOPE FLOOR TO
DRAIN; SEE DRAWING SHEET
A-104 AND COORDINATE W/
PLUMBING

ROUGH - IN PLUMBING PLAN 1

Scale= 1/4" = 1'-0" A-102