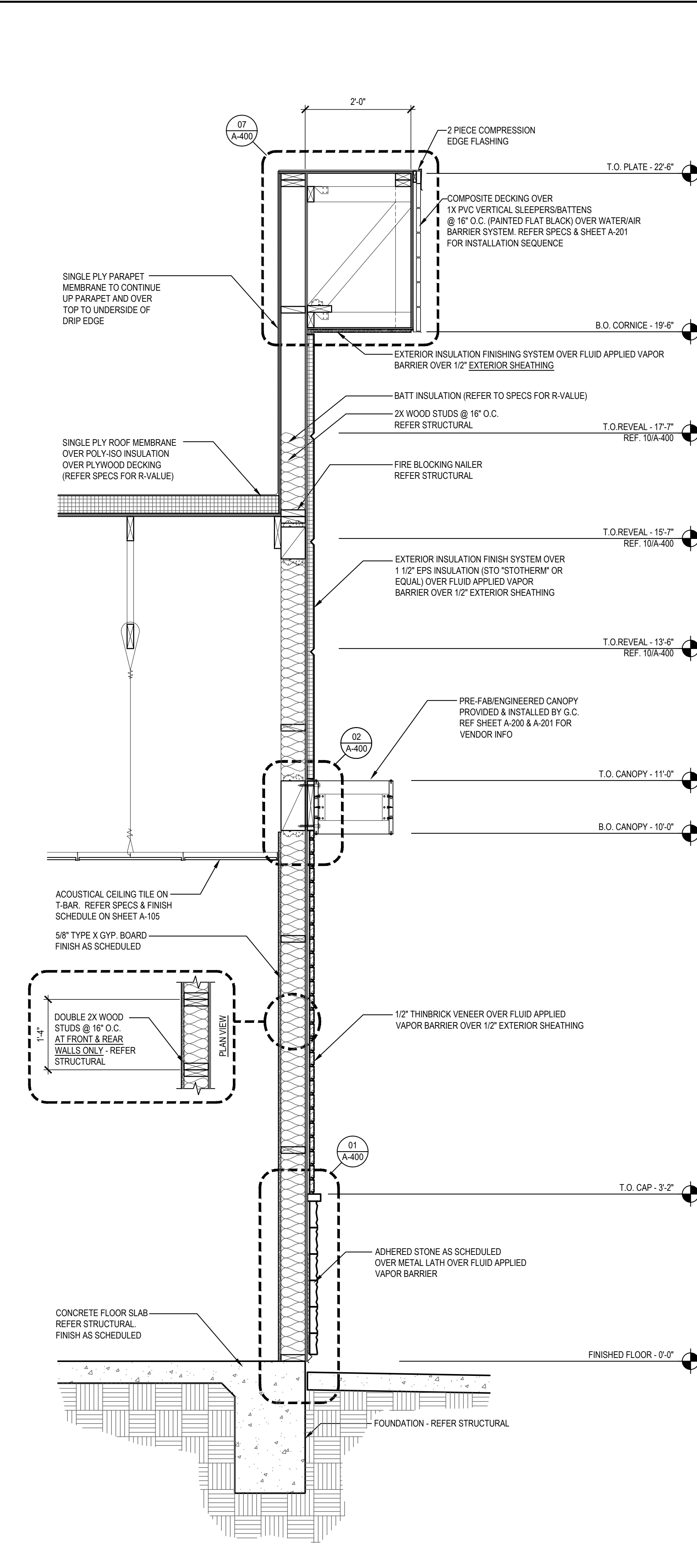
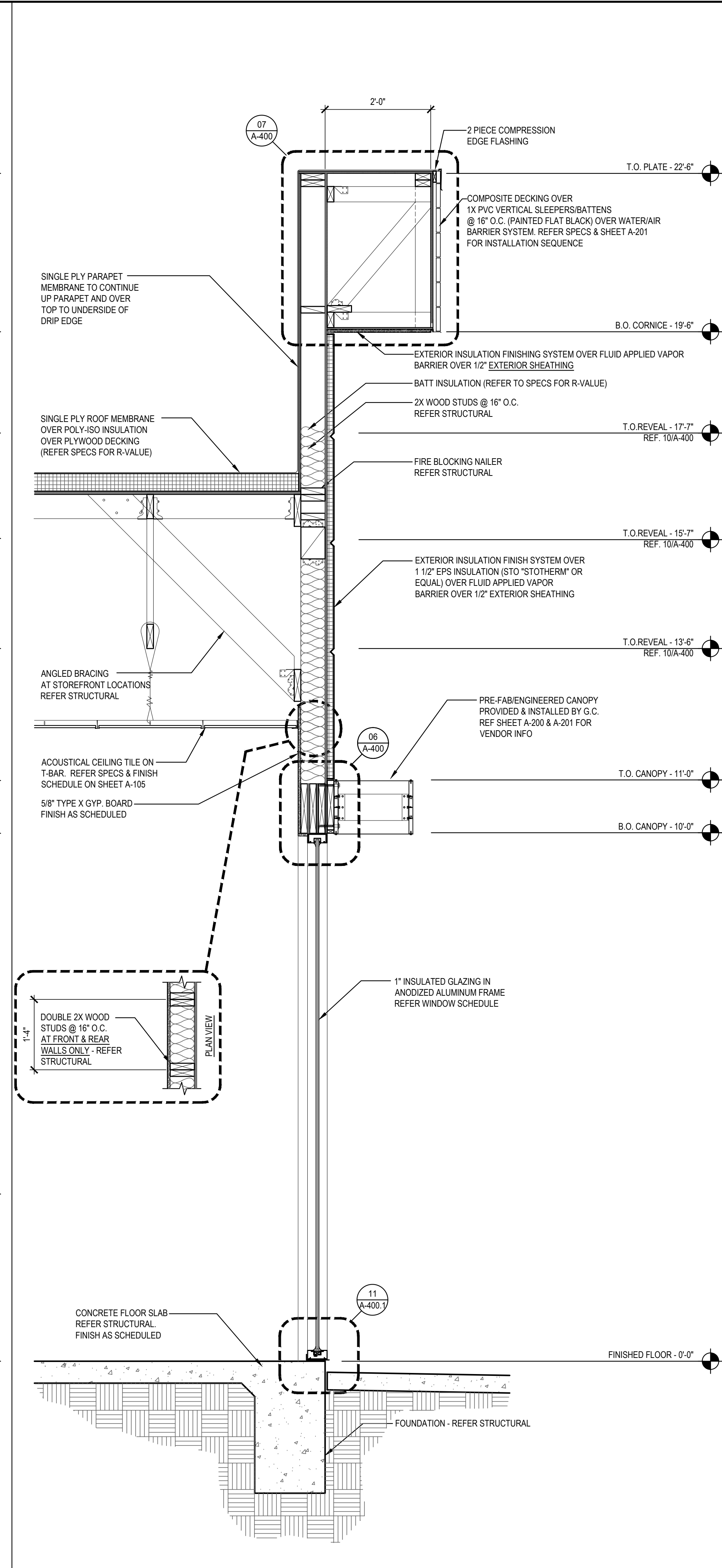


SECTION 1
Scale= 3/4" = 1'-0" A-301



SECTION 2
Scale= 3/4" = 1'-0" A-301



SECTION 3
Scale= 3/4" = 1'-0" A-301



PANDA RESTAURANT GROUP INC.
1683 Walnut Grove Ave.
Rosemead, California
91770
Telephone: 626.799.9898
Facsimile: 626.372.8288

All ideas, designs, arrangement and plans indicated or represented by this drawing are the property of Panda Express Inc. and were created for use on this specific project. None of these ideas, designs, arrangements or plans may be used by or disclosed to any person, firm, or corporation without the written permission of Panda Express Inc.

REVISIONS:	

ISSUE DATE:	
1	04.29.2021 ISSUE FOR PERMIT
2	06.04.2021 ISSUE FOR BID

DRAWN BY: JDV

PANDA PROJECT #: - S8-22-D8135
C&P PROJECT #: - 2200775

Cuhaci & Peterson
Architects Engineers Planners
2600 Maitland Center Pkwy, Maitland, FL 32751
P (407) 661-9100
F (407) 661-9101
www.cuhaci.com
Florida Certificate #00000000

06.04.2021

PANDA EXPRESS
TRUE WARM AND WELCOME 2300
SKYBROOKE BOULEVARD & STATE ROAD 54
LUTZ, FL 33558

A-301
WALL SECTIONS
TRUE WARM & WELCOME 2300 R4