

MECHANICAL KEY NOTES:

1. INSTALL GREASE EXHAUST HOODS FURNISHED BY PANDA. HOOD SHALL BE ONE CAPTIVEAIRE 4824-ND HOOD EXHAUSTING 3,450 CFM. SUPPORT FROM STRUCTURE ABOVE WITH UNISTRUT AND ALL THREADED ROD. MOUNT HOOD PER LOCAL CODE REQUIREMENTS. REFER TO PLAN FOR HOOD CONNECTIONS. SEE CODE COMPLIANCE DRAWINGS ON SHEET M-500 AND CAPTIVEAIRE HOOD DRAWINGS FOR ADDITIONAL REQUIREMENTS. (TWO SECTIONS TOTAL).
 2. INSTALL MANUFACTURED CAPTIVEAIRE 18" GREASE EXHAUST DUCT, ROUTE ON TOP OF MAKE UP AIR DUCT, FROM INLET OF ROOF MOUNTED GREASE EXHAUST FAN TO EXHAUST HOOD COLLAR. FIELD VERIFY. SEAL DUCT TO THE ROOF CURB WITH FIRE CAULKING. SEE HOOD DETAIL DRAWINGS ON SHEET M-500 AND CAPTIVEAIRE DRAWINGS ON SHEETS M-400 TO M-411.
 3. MOUNT THERMOSTAT AT MANAGER STATION. REFER TO DETAIL #1 ON SHEET E-200. SEE DWG FOR EXACT LOCATION OF REMOTE SENSOR. SEE ROOFTOP UNIT SCHEDULE AND TEMPERATURE CONTROL DIAGRAM DETAIL 5 ON SHEET M-501 FOR ADDITIONAL INFORMATION.
 4. INSTALL GREASE EXHAUST FAN WITH CURB (EF-1 AND EF-2) AND MAKE UP AIR (MA-1) FURNISHED BY PANDA. COORDINATE LOCATION OF UNIT WITH ARCHITECTURAL AND STRUCTURAL DRAWINGS.
 5. PROVIDE AND INSTALL A REMOTE SENSOR FOR ROOFTOP UNIT AT THIS LOCATION. MOUNT REMOTE SENSOR IN RETURN AIR DUCTWORK. SEE TEMPERATURE CONTROL DIAGRAM ON SHEET M-501 FOR ADDITIONAL INFORMATION.
 6. PROVIDE AND INSTALL DUCT MOUNTED SMOKE DETECTOR AT MAIN SUPPLY AIR DUCT. DETECTORS SHALL BE INTERLOCKED TO SHUT DOWN ROOFTOP UNITS UPON DETECTION OF SMOKE. PROVIDE ALL DUCT WIRING NECESSARY TO PERFORM THIS OPERATION.
 7. PROVIDE FLEXIBLE CONNECTION BETWEEN UNIT, ROUTE DUCT THRU ROOF CURB AND TRUSS.
 8. FOR GAS OR WATER CONNECTION, SEE PLUMBING DRAWINGS.
 9. PROVIDE FABRICATED CURB PER MANUFACTURERS REQUIREMENTS AND COORDINATE EXACT LOCATION OF UNIT IN FIELD. SHIM ROOF CURB LEVEL FOR PROPER CONDENSATE DRAINAGE.
 10. FURNISH AND INSTALL ALL TEMPERATURE CONTROL WIRING FROM THE UNIT TO THE THERMOSTAT OR OTHER CONTROL DEVICES.
 11. FULL SIZE SA AND RA UP TO RTU. TRANSITION AS REQUIRED TO RTU INLET/OUTLET SIZE.
 12. PVC COMBINATION VENT AND COMBUSTION AIR PIPING PROVIDED AND INSTALLED BY PLUMBING FOR SEALED COMBUSTION WATER HEATER. REFER TO PLUMBING PLANS.
 13. WATER HEATER CONCENTRIC VENT TERMINATION. REFER TO PLUMBING PLANS. OFFSET AS REQUIRED FOR CLEARANCE FROM AIR INTAKES.
 14. ROOF HYDRANT. REFER TO PLUMBING DRAWINGS.
 15. ROUTE CONDENSATE DRAIN IN CEILING SPACE OVER AND DOWN IN WALL. SLOPE 1/4" PER FOOT. STUB-OUT AND ELBOW DOWN OVER MOP SINK. TERMINATE WITH MINIMUM 2" AIR GAP.
 16. MA DUCT (BELOW MAKE UP AIR) CONNECT TO 25"x10" RISER FROM SUPPLY PLENUM.
 17. PROVIDE DUCT EXTERNAL INSULATION WRAP AT TRUNK, TYPICAL.
 18. CONDENSATE DRAIN LINE DOWN THRU ROOF. REFER TO DETAIL 16P-500.
 19. PROVIDE AND INSTALL ALL EQUIPMENT WITH MANUFACTURER'S RECOMMENDED CLEARANCES FOR MAINTENANCE. MAINTAIN MINIMUM CLEARANCES TO ELECTRICAL AND SERVICE ACCESS PANELS AND DISCONNECTS.
 20. GREASE DUCT CLEANOUT LOCATION. PROVIDE ACCESS TO CLEANOUT ABOVE CEILING. REFER TO MECHANICAL SPECIFICATIONS SHEET M-000.
 21. 8" CONNECTION TO HOOD RTU SUPPLY PLENUM COLLAR. BALANCE TO 236 CFM.
 22. PROVIDE AND INSTALL ACR TUBING, SIZED AND ROUTED PER MANUFACTURER'S INSTRUCTIONS, FROM REMOTE REFRIGERANT CONDENSERS TO WALK-IN COOLER AND FREEZER FAN COILS, AND ICE MAKER. TEST, PURGE, EVACUATE AND CHARGE LINES AS REQUIRED BY MANUFACTURER. (START-UP FOR ICE MAKER IS BY OWNER'S REPRESENTATIVE). ROUTE REFRIGERANT LINES THROUGH "AIR HUB" PROVIDED AND INSTALLED BY GC (REFER TO ARCH. ISO 3 AND 4, SHEET A-108). UNITS SECURED TO RACK BY G.C.
 23. ROOM AIR SENSOR FROM CAPTIVEAIRE HOOD ON BACK OF MENU BOARD WALL, AS CLOSE TO CEILING AS POSSIBLE.
 24. TRANSITION FULL SIZE RETURN PLENUM DOWN TO GRILLES AS REQUIRED. INSIDE RETURN AIR PLENUM WITH 1" LINER PAINTED FLAT BLACK. RE. 1M-501

NOTE: MAXIMUM FLEXIBLE DUCT LENGTH ALLOWED SHALL BE PER LOCAL CODE AND AMENDMENTS. IMC HAS NO LIMITATIONS FOR FLEXIBLE DUCT LENGTHS.



PANDA EXPRESS, INC.
1683 Walnut Grove Ave.
Rosemead, California
91770
Telephone: 626.799.9898
Facsimile: 626.372.8288

All ideas, designs, arrangement and plans indicated or represented by this drawing are the property of Panda Express Inc. and were created for use on this specific project. None of these ideas, designs, arrangements or plans may be used by or disclosed to any person, firm, or corporation without the written permission of Panda Express Inc.

REVISIONS:

1 BLDG DEPT COMMENTS

[illegible]

ISSUE DATE:

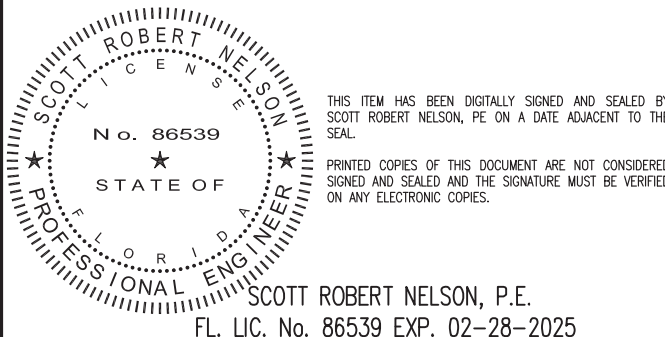
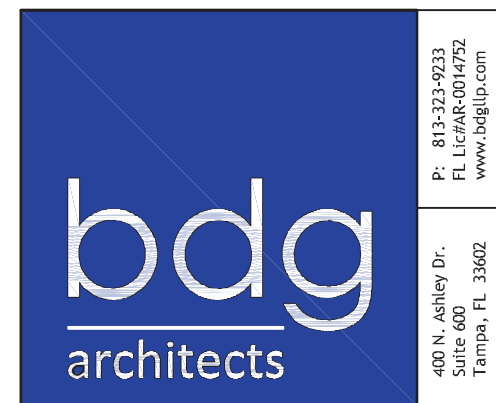
	PERMIT SET	12-20-2023
	REV 1	08-11-2023
	BID SET	08-11-2023

DRAWN BY: BDG

PANDA PROJECT #: D23223

PANDA STORE #:

ARCH PROJECT #: 229204



PANDA EXPRESS

PANDA HOME 2600
SR 64 & POPE ROAD
BRADENTON, FL 34208

H.V.A.C. FLOOR AND
ROOF PLAN

PANDA HOME 2600 R4

PATENT NUMBERS
EXHAUST HOODS ND-2/BD-2/SND-2 (CANADA) - CA PATENT 2520435 C.

HOLD NO	TAG	MODEL	MANUFACTURER	LENGTH	MAX COOKING TEMP	TYPE	APPLIANCE DUTY	DESIGN CFM/FT	TOTAL EXH CFM	EXHAUST PLENUM RISER(S)							TOTAL SUPPLY CFM	HOOD CONFIG		
										WIDTH	LENG	HEIGHT	DIA	CFM	VEL	SP		HOOD CONSTRUCTION	END TO END	ROW
1		4824 ND-2	CAPTIVEAIRE	13' 0"	600 DEG	I	HEAVY	262	3400									430 SS WHERE EXPOSED	LEFT	ALONE
2		4824 ND-2	CAPTIVEAIRE	11' 2"	600 DEG	I	HEAVY	260	2900			4'	18"	2900	1641	-0.897'	0	430 SS WHERE EXPOSED	RIGHT	ALONE
3		226 MISC ACPSP-DONLY	CAPTIVEAIRE	11' 9"	300 DEG	I	N/A	0	0								2770	430 SS WHERE EXPOSED	ALONE	ALONE
4		226 MISC ACPSP-DONLY	CAPTIVEAIRE	14' 4"	300 DEG	I	N/A	0	0								2770	430 SS WHERE EXPOSED	ALONE	ALONE

[illegible]

HOOD NO	TAG	OPTION
1		LEFT END STANDOFF (FINISHED) 3' WIDE 48' LONG. RISER SENSOR INSTALL 6IN PLEN.
2		RISER SENSOR INSTALL 6IN PLEN.

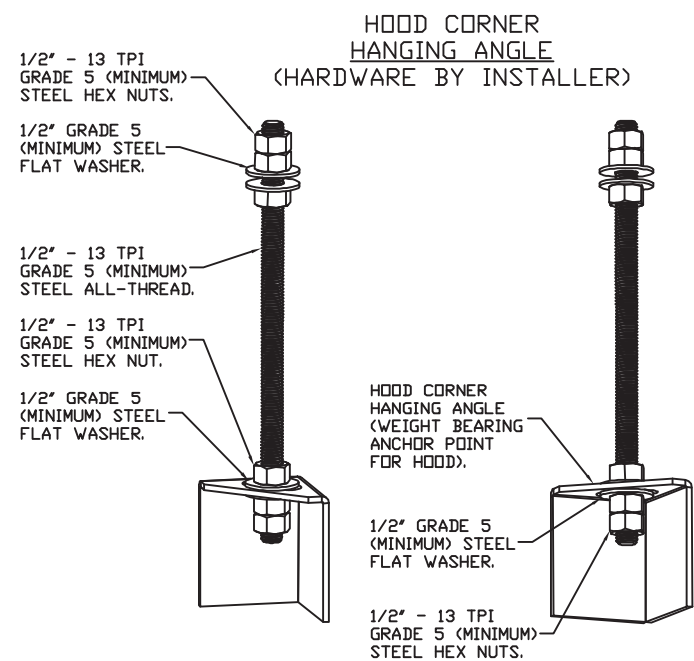
HOOD NO	TAG	POS	LENGTH	WIDTH	HEIGHT	TYPE	RISER(S)			
							WIDTH	LENG	DIA	CFM
3	Front	141"	10"	6"	AC			8"	236	0.135"
					AC			8"	236	0.135"
	Back	141"	12"	6"	MUA	10"	28"		1260	0.530"
					MUA	10"	28"		1260	0.530"
4	Front	172"	10"	6"	AC			8"	236	0.122"
					AC			8"	236	0.122"
	Back	172"	12"	6"	MUA	10"	28"		1254	0.497"
					MUA	10"	28"		1254	0.497"

UTILITY CABINET(S)							
HOOD NO	LOCATION	SIZE	FIRE SYSTEM		ELECTRICAL	SWITCHES	WEIGHT
			TYPE	SIZE	MODEL #	QUANTITY	
1	WALL MNT	12"x54"x24"	ANSUL R-102	3.0/3.0/3.0	DCV-2111	1 LIGHT 1 FAN	305.00 LBS

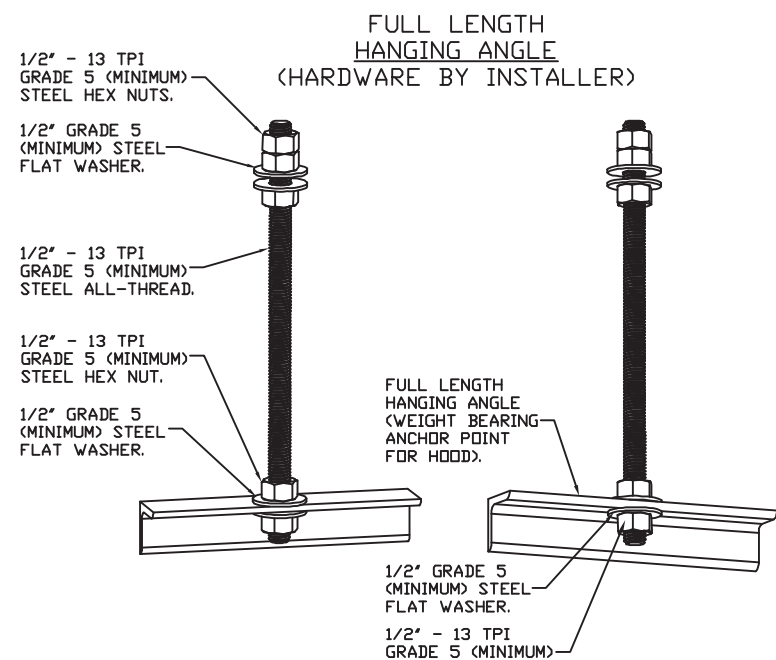
FIRE SYSTEM NO	TAG	TYPE	SIZE	FLOW POINTS	INSTALLATION	
					SYSTEM	LOCATION ON HOOD
1		ANSUL R102	3.0/3.0/3.0	29	WALL UTILITY CABINET LEFT	N/A

FIRE SYSTEM NO	TAG	TYPE	SIZE	SUPPLIED BY
1		MECHANICAL	2,000	CAPTIVEAIRE SYSTEMS

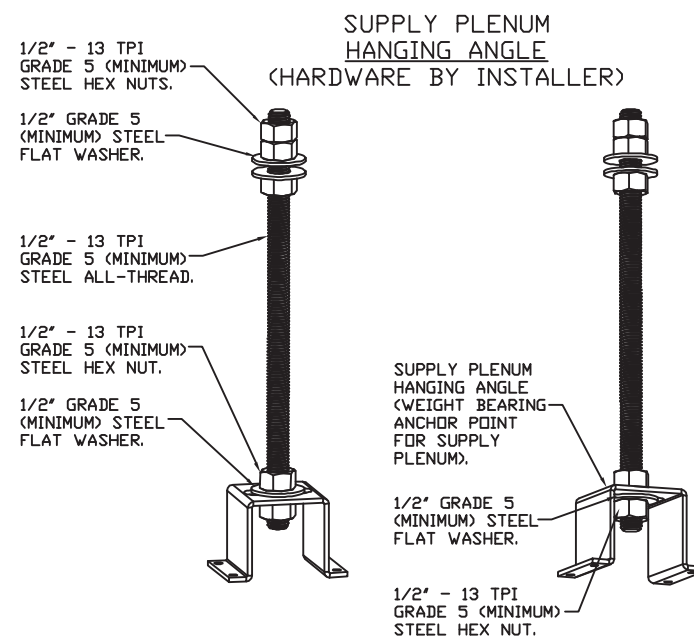
FOR QUESTIONS CALL THE
CAPTIVEAIRE
SOUTHERN CALIFORNIA OFFICE
3002 DOW AVENUE, SUITE 410
TUSTIN, CA 92780
TEL: 714-957-1500 EMAIL: REG86@CAPTIVEAIRE.COM




HANGING ANGLE MUST BE SUPPORTED WITH 1/2" - 13 TPI
GRADE 5 (MINIMUM) ALL-THREAD, SANDWICH HANGING
ANGLES AND CEILING ANCHOR POINTS WITH 1/2" GRADE 5
(MINIMUM) STEEL FLAT WASHERS AND 1/2" - 13 TPI
GRADE 5 (MINIMUM) HEX NUTS AS SHOWN. MUST USE
DOUBLED HEX NUT CONFIGURATION BENEATH HOOD HANGING
ANGLES AND ABOVE CEILING ANCHORS. MAINTAIN 1/4" OF
EXPOSED THREADS BENEATH BOTTOM HEX NUT. TORQUE
ALL HEX NUTS TO 57 FT-LBS.



HANGING ANGLE MUST BE SUPPORTED WITH 1/2" - 13 TPI GRADE 5 (MINIMUM) ALL-THREAD. SANDWICH HANGING ANGLES AND CEILING ANCHOR POINTS WITH 1/2" GRADE 5 (MINIMUM) STEEL FLAT WASHERS AND 1/2" - 13 TPI GRADE 5 (MINIMUM) HEX NUTS AS SHOWN. MUST USE DOUBLED HEX NUT CONFIGURATION ABOVE CEILING ANCHORS. SINGLE HEX NUT BENEATH HANGING ANGLE IS ACCEPTABLE FOR FULL LENGTH HANGING ANGLES. MAINTAIN 1/4" OF EXPOSED THREADS BENEATH BOTTOM HEX NUT. TORQUE ALL HEX NUTS TO 57 FT-LBS.



HANGING ANGLE MUST BE SUPPORTED WITH 1/2" - 13 TPI GRADE 5 (MINIMUM) ALL-THREAD. SANDWICH HANGING ANGLES AND CEILING ANCHOR POINTS WITH 1/2" GRADE 5 (MINIMUM) STEEL FLAT WASHERS AND 1/2" - 13 TPI GRADE 5 (MINIMUM) HEX NUTS AS SHOWN. MUST USE DOUBLED HEX NUT CONFIGURATION ABOVE CEILING ANCHORS. SINGLE HEX NUT BENEATH HANGING ANGLE IS ACCEPTABLE FOR PSP HANGING ANGLES. MAINTAIN 1/4" OF EXPOSED THREADS BENEATH BOTTOM HEX NUT. TORQUE ALL HEX NUTS TO 57 FT-LBS.

<div style="display: flex; justify-content: space-between;"> <div> <p>REVISIONS</p> <table border="1"> <tr> <th>NO.</th> <th>DESCRIPTION</th> <th>DATE</th> </tr> <tr><td> </td><td> </td><td> </td></tr> <tr><td> </td><td> </td><td> </td></tr> <tr><td> </td><td> </td><td> </td></tr> <tr><td> </td><td> </td><td> </td></tr> <tr><td> </td><td> </td><td> </td></tr> </table> </div> <div>  <p>www.captiveusa.com</p> <div style="display: flex; justify-content: space-around;">    </div> </div> </div>		NO.	DESCRIPTION	DATE																<p>Southern California Office</p> <p>3002 Dow Ave., Suite 410, Tustin, CA 92780 PHONE: (714) 957-1500 FAX: (919) 227-5597/5 EMAIL: reg8@captivesite.com</p>
NO.	DESCRIPTION	DATE																		
<p>Panda Express – Bradenton FL (Pope)</p> <p>SR 64 & Pope Road,</p> <p>Bradenton, FL, 34208</p>	<p>DATE: 11/14/2022</p> <p>DWG.#: 5729875</p> <p>DRAWN BY: AH-86</p> <p>SCALE: 3/4" = 1'-0"</p> <p>MASTER DRAWING</p>																			
<p>SHEET NO.</p> <p>1</p>																				



PANDA EXPRESS, INC.
1683 Walnut Grove Ave.
Rosemead, California
91770
Telephone: 626.799.9898
Facsimile: 626.372.8288

All ideas, designs, arrangement and plans indicated or represented by this drawing are the property of Panda Express Inc. and were created for use on this specific project. None of these ideas, designs, arrangements or plans may be used by or disclosed to any person, firm, or corporation without the written permission of Panda Express Inc.

REVISIONS:

ISSUE DATE:

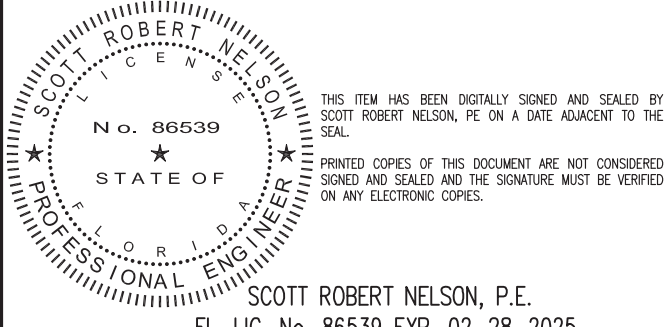
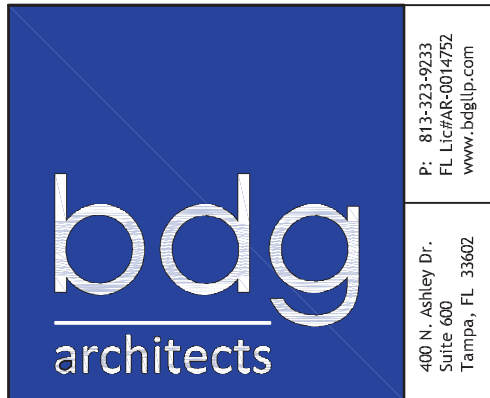
	PERMIT SET	12-20-2023
	REV 1	08-11-2023
	BID SET	08-11-2023

DRAWN BY: BDG

PANDA PROJECT #: D23223

PANDA STORE #: TBD

ARCH PROJECT #: 229204

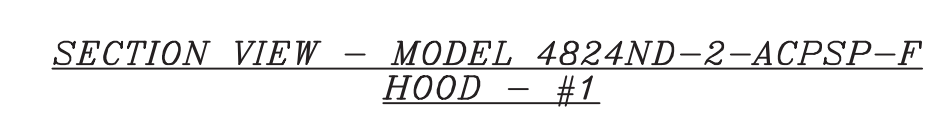
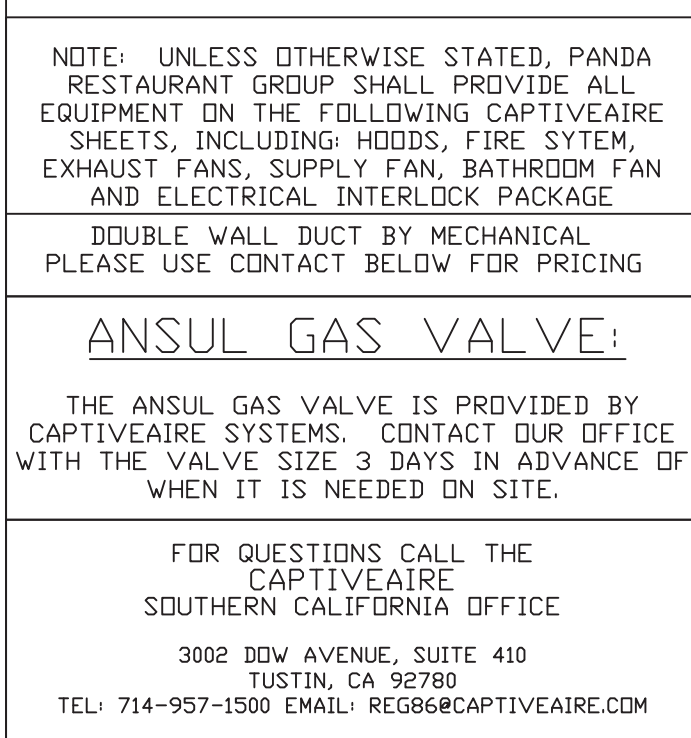


PANDA EXPRESS

PANDA HOME 2600
SR 64 & POPE ROAD
BRADENTON, FL 34208

HOOD DETAIL PLAN

PANDA HOME 2600 R4



CAPTIVE-AIRE HOODS ARE
BUILT IN COMPLIANCE WITH
UL 710 AND NFPA 96
AND ARE RECOGNIZED BY ONE
OR MORE OF THE FOLLOWING:

ETL SANITATION LISTED

ETL LISTED

FILE# 102900319PRT-001

KPI ENGINEERING, INC.

PROFESSIONAL ENGINEERS

"No matter the Scope, KPI has YOU Covered"

3203 QUEEN PALM DRIVE
TAMPA, FLORIDA 33619
PHONE (813) 241-6488
FAX (813) 241-6498

BOARD OF PROFESSIONAL ENGINEERS - LICENSE # 27336



PRINTED 8/14/2023

Technical drawing showing the front view of a machine. Dimensions are indicated in inches:

- Overall width: 23 3/4"
- Overall height: 16 1/4"
- Base width: 19"
- Base height: 2"
- Internal width (top): 10 5/8"
- Internal width (middle): 13"

TOP VIEW

- DIRECT DRIVE CONSTRUCTION (NO BELTS/PULLEYS).
- ROOF MOUNTED FANS.
- UL705.
- SAFETY DISCONNECT.
- STANDARD BIRD SCREEN.
- SPEED CONTROL.

- ECM WIRING PACKAGE - MANUAL OR 0-10VDC REFERENCE SPEED CONTROL
- RTC- (TELCO MOTOR), CCW ROTATION
- 1 12-BDD DAMPER.
- 2 YEAR PARTS WARRANTY.



SPECIFY PITCH:
EXAMPLE: 7/12 PITCH = 30° SLOPE

A cross-sectional diagram of a roof opening. A rectangular box represents the backdraft damper, installed over a roof. An arrow labeled "AIR FLOW" points upwards from the damper. The damper is labeled "BACKDRAFT DAMPER". Below the damper, the roof structure is shown with a jagged line representing the roof edge. A dimension line indicates the width of the opening is 13, labeled "(ROOF OPENING)".

DOUBLE WALL DUCT BY MECHANICAL
PLEASE USE CONTACT BELOW FOR PRICING

THE ANSUL GAS VALVE IS PROVIDED BY CAPTIVEAIRE SYSTEMS. CONTACT OUR OFFICE WITH THE VALVE SIZE 3 DAYS IN ADVANCE OF WHEN IT IS NEEDED ON SITE.

FOR QUESTIONS CALL THE
CAPTIVEAIRE
SOUTHERN CALIFORNIA OFFICE

3002 DOW AVENUE, SUITE 410
TUSTIN, CA 92780
TEL: 714-957-1500 EMAIL: REG86@CAPTIVEAIRE.COM

Panda Express - Bradenton FL (Pope)
SR 64 & Pope Road,
Bradenton, FL, 34208

DATE: 11/14/2022

DWG.#:
5729875

DRAWN BY: AH-86

SCALE:
3/4" = 1'-0"

MASTER DRAWING

SHEET NO.
5

KPI ENGINEERING, INC.

PROFESSIONAL ENGINEERS

"No matter the Scope, KPI has YOU Covered"

3203 QUEEN PALM DRIVE
TAMPA, FLORIDA 33619
PHONE (813) 241-6488
FAX (813) 241-6498

BOARD OF PROFESSIONAL ENGINEERS - LICENSE # 27336



All ideas, designs, arrangement and plans indicated or represented by this drawing are the property of Panda Express Inc. and were created for use on this specific project. None of these ideas, designs, arrangements or plans may be used by or disclosed to any person, firm, or corporation without the written permission of Panda Express Inc.

ISSUE DATE:

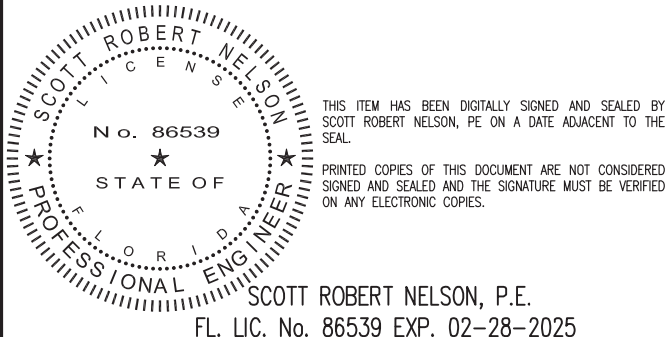
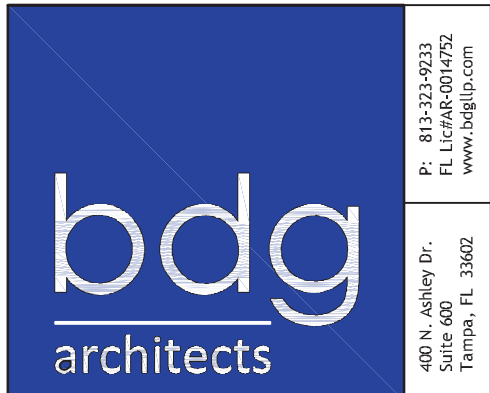
PERMIT SET	12-20-2022
REV 1	08-11-2022
BID SET	08-11-2022

DRAWN BY: BDG

PANDA PROJECT #: D23223

PANDA STORE #: TBD

ARCH PROJECT #: 229204



PANDA EXPRESS

PANDA HOME 2600
SR 64 & POPE ROAD
BRADENTON, FL 34208

M-404

HOOD DETAIL PLAN

PANDA HOME 2600 R4

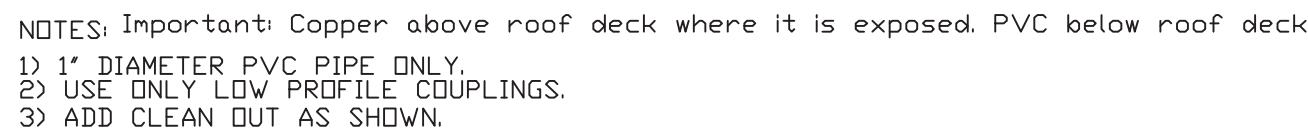
PRINTED 8/14/2023

NOTE: SUPPLY DUCT MUST BE INSTALLED TO MEET SMACNA STANDARDS. A MINIMUM STRAIGHT DUCT LENGTH MUST BE MAINTAINED DOWNSTREAM OF UNIT DISCHARGE AS OUTLINED IN AMCA PUBLICATION 201. WHEN USING RECTANGULAR DUCTWORK, ELBOWS MUST BE RADIUS THROAT, RADII BACK WITH TURNING VANES. FLEXIBLE DUCTWORK AND SQUARE THROAT/SQUARE BACK ELBOWS SHOULD BE USED TO MINIMIZE TRANSITION LOSSES. IN THE DUCTWORK, VALVE, CASSETTE, SYSTEM EFFECT WILL BE DRAMATICALLY INCREASED. INCREASED PRESSURE AND REDUCE AIRFLOW. DO NOT RELY ON UNIT TO SUPPORT DUCT IN ANY WAY. FAILURE TO PROPERLY SIZE DUCTWORK MAY CAUSE SYSTEM EFFECTS AND REDUCE PERFORMANCE OF THE EQUIPMENT. SUGGESTED STRAIGHT DUCT SIZE IS 24" x 24".

```

WINTER TEMPERATURE = 44°F.  TEMP. RISE = 45°F.
BTUS CALCULATED OFF ACTUAL AIR DENSITY.
OUTPUT BTUS AT ALTITUDE OF 0.0 FT. = 236117.
INPUT BTUS AT ALTITUDE OF 0.0 FT. = 256649.
OUTPUT BTUS AT ALTITUDE OF 11 FT. = 236023.
INPUT BTUS AT ALTITUDE OF 11 FT. = 256547.

```



ADDITIONAL COMMENTS:

-BURNERS SHALL HAVE PATENTED US PATENT NO. US6698293B-1; SELF-ADJUSTING PROFILE PLATES DESIGNED TO INSURE PROPER AIR VELOCITY AND PRESSURE DROP ACROSS THE BURNER PROFILE PLATE IN ORDER TO ACHIEVE CLEAN COMBUSTION BY LIMITING PREPRODUCT LEVELS TO A MAXIMUM OF 0.5% OF CARBON MONOXIDE CO₂, AND 0.5% OF NITROGEN DIOXIDE UNDESIRIED FUEL CONSUMPTION. BURNERS SHALL BE INSTALLED WITH AN EXCESSIVE AIR BURNER, THIS ARRANGEMENT WILL ENSURE A CONSISTENT AIRFLOW, REGARDLESS OF INLET AIR TEMPERATURE.

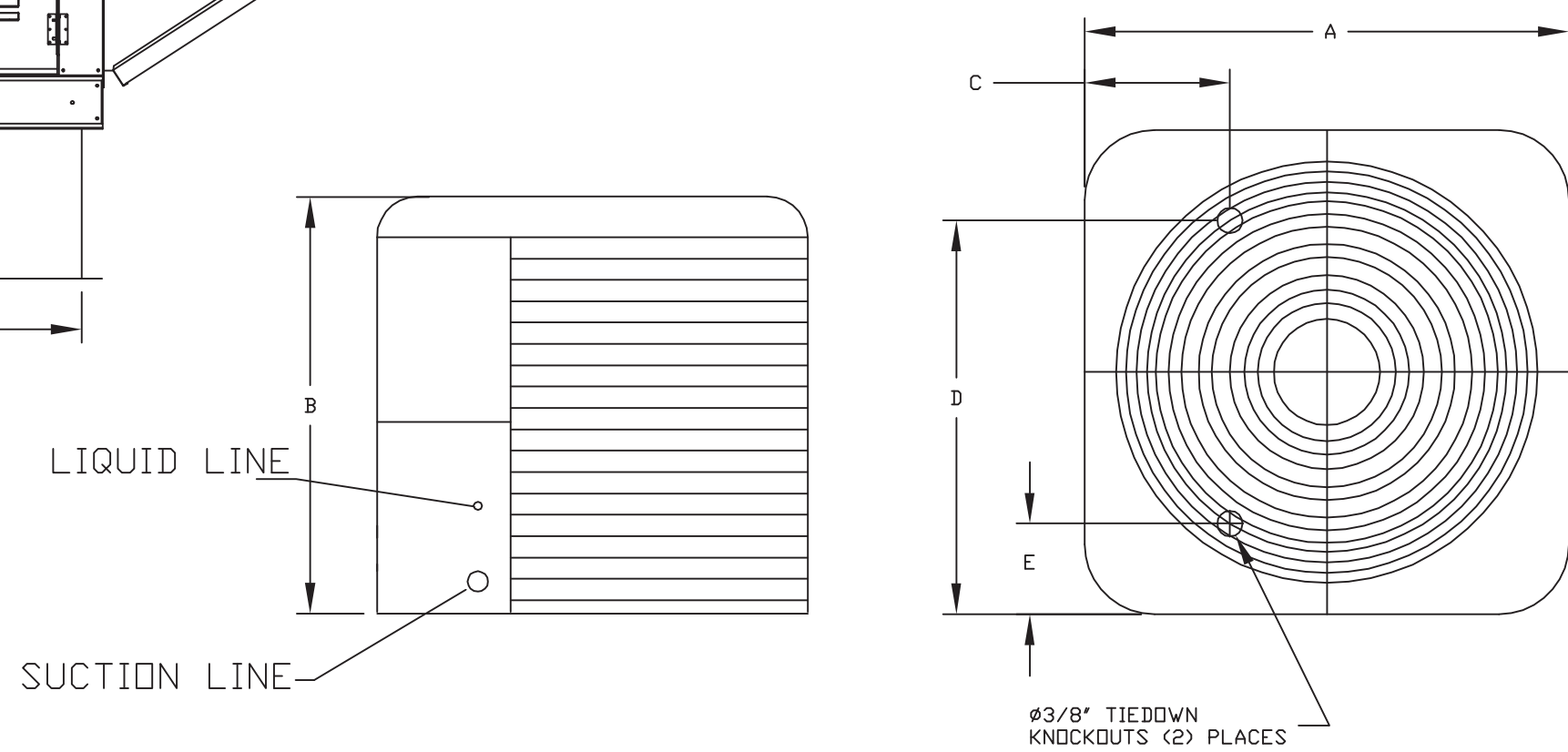
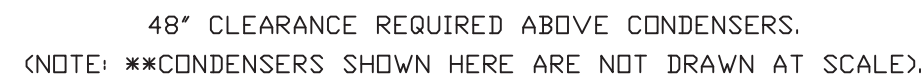
-SPRING-LOADED BURNER PROFILE PLATES ARE ENGINEERED TO AUTOMATICALLY REACT TO THE MOMENTUM OF THE FLAME TO MAINTAIN THE CORRECT AIR/FUEL RATIO FOR STABLE COMBUSTION. BURNERS SUPPLIED WITH THIS FEATURE, AS ALL UNITS ARE DESIGNED FOR DEMAND CONTROL VENTILATION (QCV) REDUCED FLOW MODES.

CERTIFICATIONS:

-ALL ASSEMBLIES SHALL BE INCLUDED IN THE IFU UNIT'S ETL LISTING AND COMPLY WITH SAFETY STANDARDS ANSI Z83.4 AND CSA 3.7 (NON-RECIRCULATING OF HEATERS) AND ANSI Z83.18 (RECIRCULATING OF HEATERS).

GENERAL CONSTRUCTION:

- PROFILE PLATES SHALL BE FORMED FROM 60 GALVANIZED STEEL.
- PROFILE PLATES SHALL HAVE A MINIMUM THICKNESS OF .015".
- PROFILE PLATES SHALL BE MOUNTED ALONG THE SAME PLANE AS THE DISCHARGE OF THE BURNER.
- THE "DOWN" POSITION OF THE PROFILE PLATE SHALL BE PERMANENTLY MOUNTED SPRING HINGES.
- SPRING HINGES SHALL BE MADE FROM PLATED STEEL.



UNIT DIMENSIONS						CONNECTION SIZES		NOMINAL TONNAGE	
MODEL	WEIGHT	A	B	C	D	E	SECTION		LIQUID
24ABB360	190 LBS	31-3/16	25-1/2	9-1/8	24-11/16	6-9/16	7/8	3/8	5

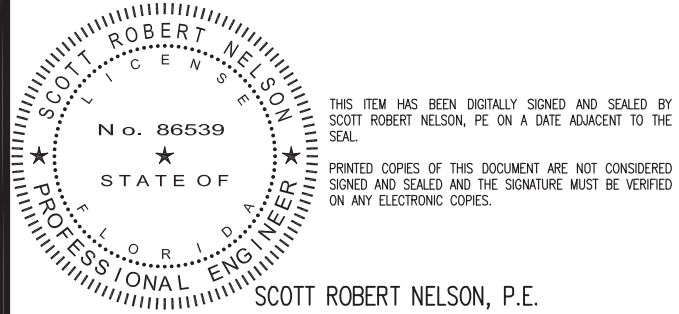
MODEL	V-PH	RLA	MCA	FUSE SIZE
24ABB360	208/230-3	16.0	21.4	30

SHEET NO.
6



All ideas, designs, arrangement and plans indicated or represented by this drawing are the property of Panda Express Inc. and were created for use on this specific project. None of these ideas, designs, arrangements or plans may be used by or disclosed to any person, firm, or corporation without the written permission of Panda Express Inc.

ARCH PROJECT #: 229204



PANDA HOME 2600
SR 64 & POPE ROAD
BRADENTON, FL 34208

HOOD DETAIL PLAN

PANDA HOME 2600 R4

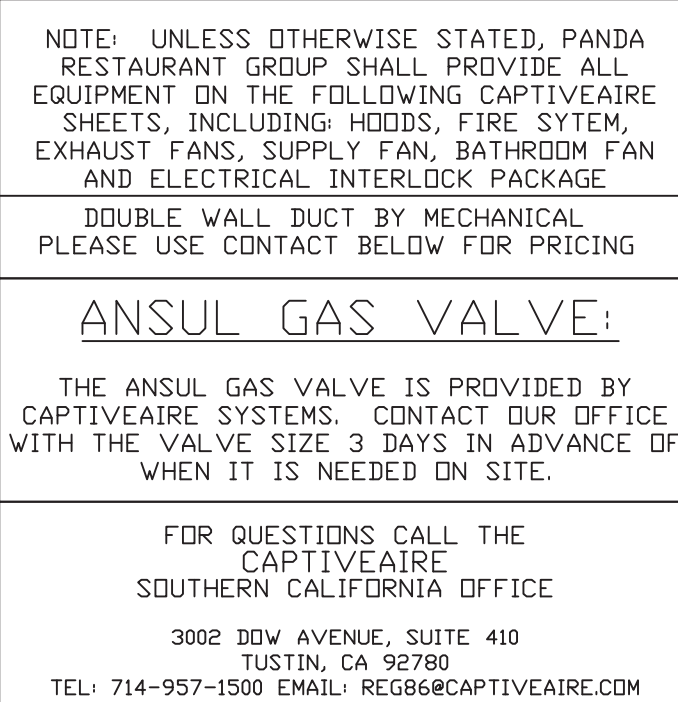
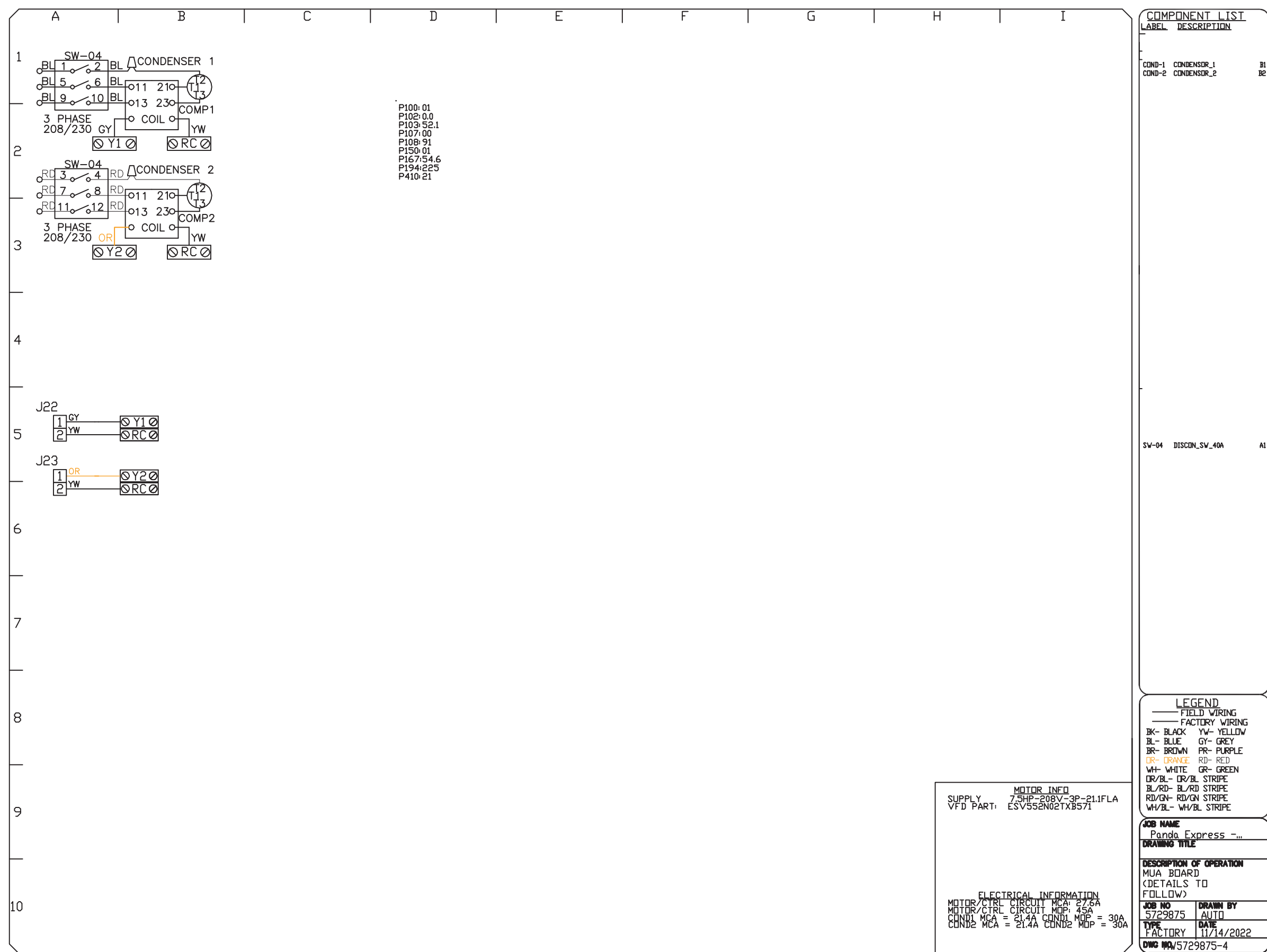
KPI ENGINEERING, INC.

PROFESSIONAL ENGINEERS

"No matter the Scope, KPI has YOU Covered"

3203 QUEEN PALM DRIVE
TAMPA, FLORIDA 33619
PHONE (813) 241-6488
FAX (813) 241-6498

BOARD OF PROFESSIONAL ENGINEERS - LICENSE # 27336



REVISIONS	
DESCRIPTION	DATE:
△	
△	
△	
△	
△	

Panda Express - Bradenton FL (Pope)

SR 64 & Pope Road,

Bradenton, FL, 34208

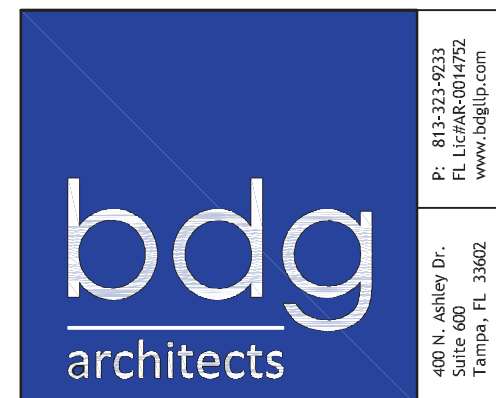


www.captivate.com

Southern California Office

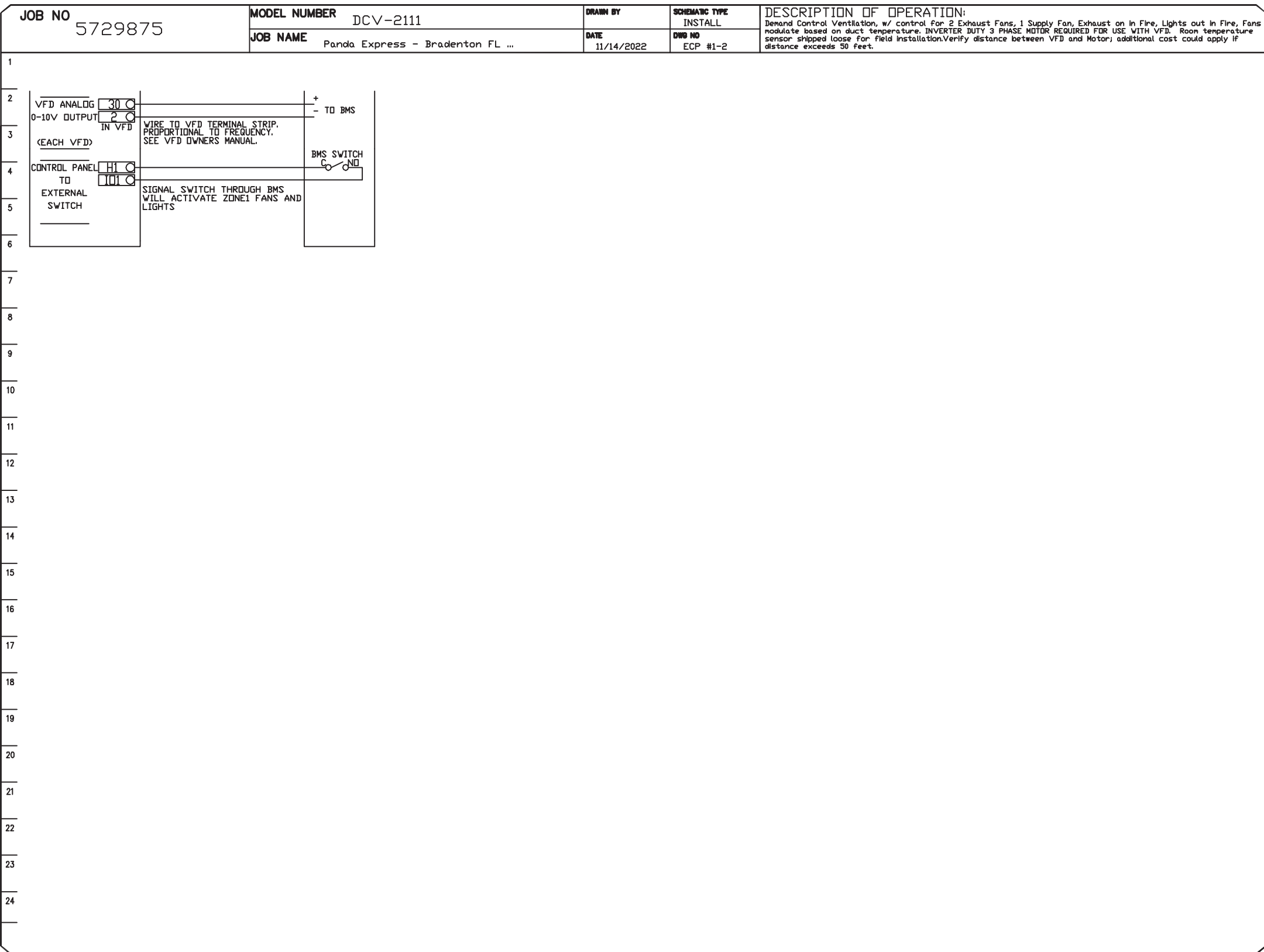
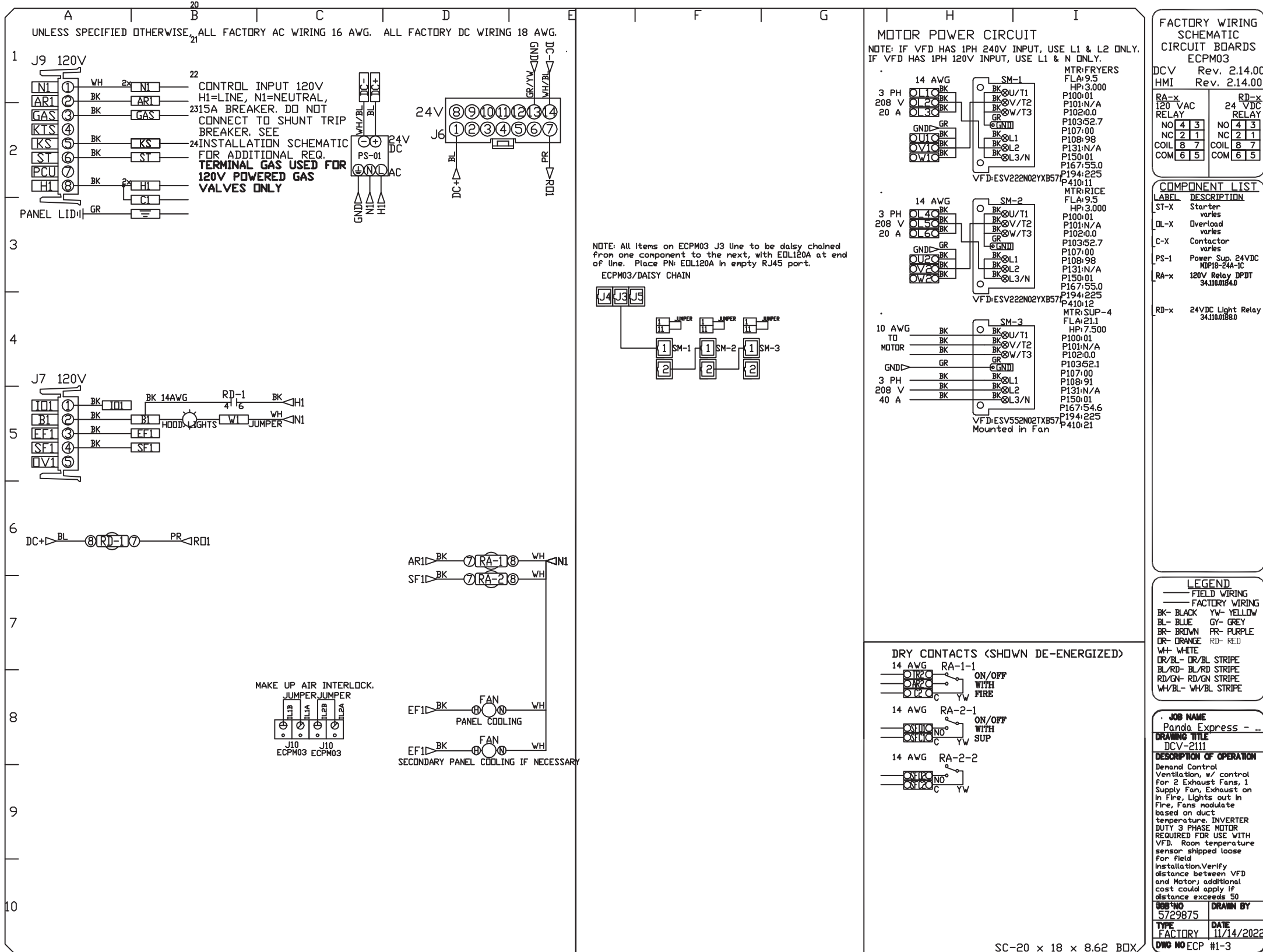
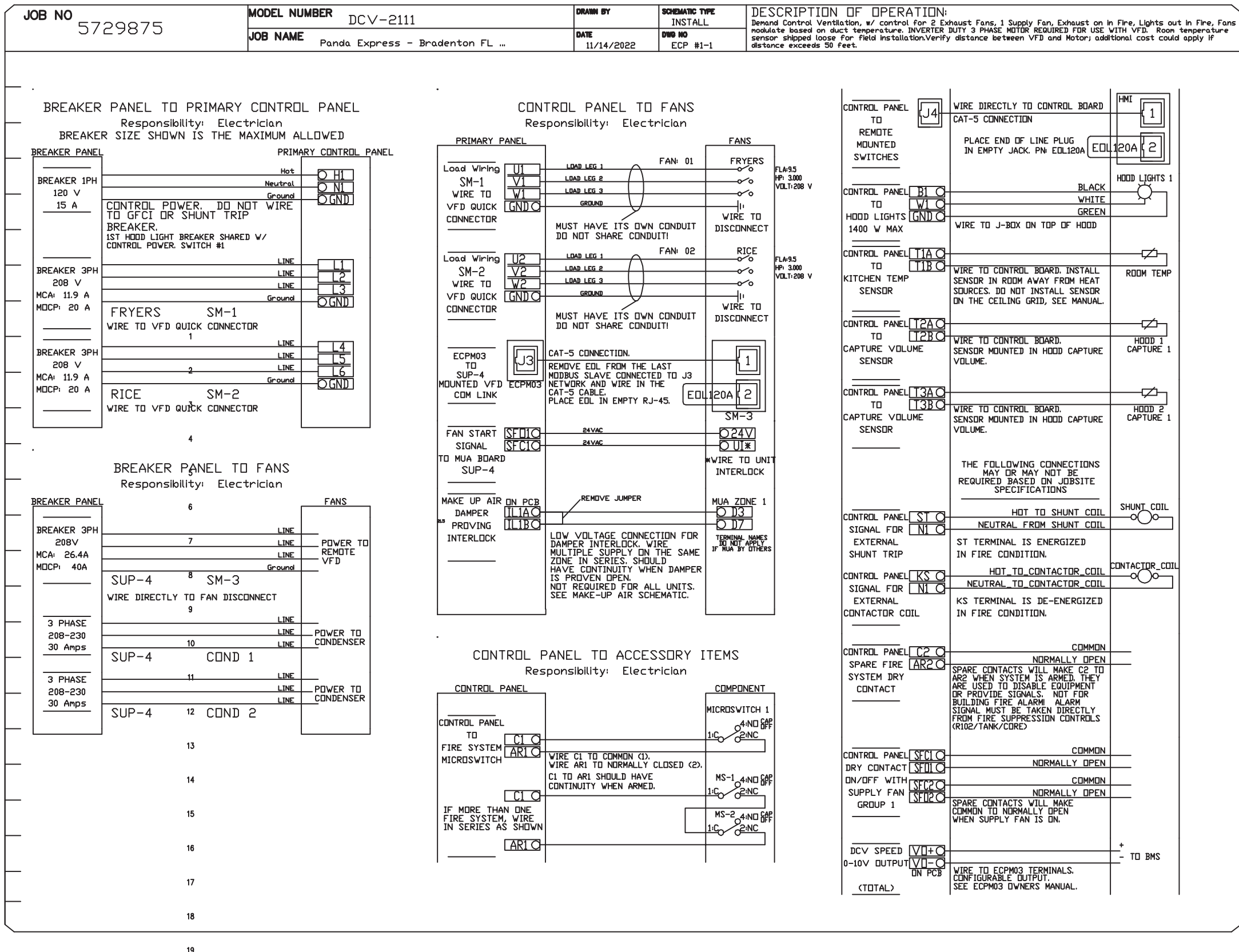
3002 Dow Ave., Suite 410, Tustin, CA 92780 PHONE: (714) 957-1500 FAX: (919) 227-5575 EMAIL: reg8@captivate.com

DATE: 11/14/2022	DWG.#: 5729875
DRAWN BY: AH-86	SCALE: 3/4" = 1'-0"
MASTER DRAWING	
SHEET NO. 7	



PANDA HOME 2600 R4

NO	TAG	PACKAGE #	LOCATION	SWITCHES		OPTION	FANS CONTROLLED					
				LOCATION	QUANTITY		FAN TAG	TYPE	ø	HP	VOLT	FLA
1		DCV-2111	WALL UTILITY CABINET LEFT	08 - SHIP LOOSE W/ PREWIRE	1 LIGHT 1 FAN	SMART CONTROLS DCV	FRYERS	EXHAUST	3	3.000	208	9.5
							RICE	EXHAUST	3	3.000	208	9.5
								SUPPLY	3	7.500	208	21.1



NOTE: UNLESS OTHERWISE STATED, PANDA RESTAURANT GROUP SHALL PROVIDE ALL EQUIPMENT ON THE FOLLOWING CAPTIVEAIRE SHEETS, INCLUDING: HODDS, FIRE SYSTEM, EXHAUST FANS, SUPPLY FAN, BATHROOM FAN AND ELECTRICAL. PERMITS, BACKFLOW PREVENTER, DOUBLE WALL DUCT BY MECHANICAL. PLEASE USE CONTACT BELOW FOR PRICING

ANSUL GAS VALVE:

THE ANSUL GAS VALVE IS PROVIDED BY CAPTIVEAIRE SYSTEMS. CONTACT OUR OFFICE WITH THE VALVE SIZE 3 DAYS IN ADVANCE OF WHEN IT IS NEEDED ON SITE.

FOR QUESTIONS CALL THE
CAPTIVEAIRE
SOUTHERN CALIFORNIA OFFICE

3002 BOW AVENUE, SUITE 410
TUSTIN, CA 92780
TEL 714-957-1502 EMAIL REG@CAPTIVEAIRE.COM

KPI ENGINEERING, INC.

PROFESSIONAL ENGINEERS

"No matter the Scope, KPI has YOU Covered"

3203 QUEEN PALM DRIVE
TAMPA, FLORIDA 33619
PHONE (813) 241-6488
FAX (813) 241-6498

BOARD OF PROFESSIONAL ENGINEERS - LICENSE # 27336



PANDA EXPRESS, INC.
1683 Walnut Grove Ave.
Rosemead, California
91770
Telephone: 626.799.9898
Facsimile: 626.372.8288

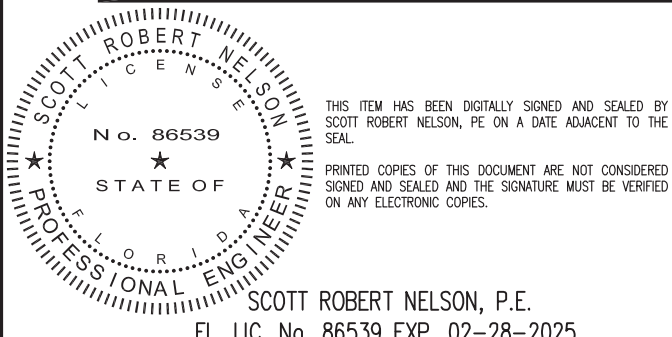
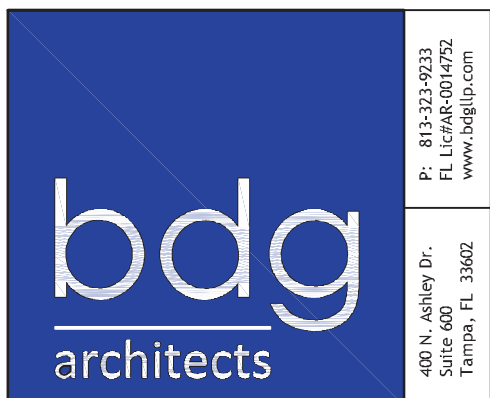
All ideas, designs, arrangement and plans indicated or represented by this drawing are the property of Panda Express Inc. and were created for use on this specific project. None of these ideas, designs, arrangements or plans may be used by or disclosed to any person, firm, or corporation without the written permission of Panda Express Inc.

REVISIONS:

[illegible]

DRAWN BY: BDG

PANDA PROJECT #: D23223
PANDA STORE #: TBD
ARCH PROJECT #: 229204



PANDA EXPRESS

PANDA HOME 2600
SR 64 & POPE ROAD
BRADENTON, FL 34208

M-407

HOOD DETAIL PLAN

PANDA HOME 2600 R4

DUCTWORK #1 PARTS - JOB#5729875 DOUBLE WALL

TAG	PART #	CFM	GPM	ZONE	COVEREDBY	SP	WEIGHT	VELOCITY	QTY	DESCRIPTION
P1	DW1829DWLT-2R-S	3400				-0.009	50.46	1924.01	1	DOUBLE WALL DUCT - 18" INNER DUCT, 29' LONG - 2 LAYERS REDUCED CLEARANCE - 22" STAINLESS STEEL OUTER SHELL.
P2	DW1847DWAJD-2R-S	3400				-0.009	107.98	1924.01	1	DOUBLE WALL ADJUSTABLE DUCT - 18" INNER DUCT - 2 LAYERS REDUCED CLEARANCE - 22" STAINLESS STEEL OUTER SHELL. MIN LENGTH = 11' / MAX LENGTH = 48.5' / ADJUSTMENT = 30.5' / ADJUSTABLE SECTION MAY NEED TO BE CUT. INCLUDES SINGLE AND DOUBLE WALL CLAMPS.
P3	DW1890DWASY-2R-S	3400				-0.115	45.59	1924.01	1	DOUBLE WALL DUCT - 18" INNER 90 DUCT - 2 LAYERS REDUCED CLEARANCE - 22" STAINLESS STEEL OUTER SHELL.
P4	DW1801DWOFFSETASY-2R-S	3400				-0.003	14.66	1924.01	1	DOUBLE WALL DUCT - 18" INNER DUCT RISER & 1 DEGREE OFFSET - 2 LAYERS REDUCED CLEARANCE - 22" STAINLESS STEEL OUTER SHELL.
P5	DW1827DWAJD-2R-S	3400				-0.006	62.85	1924.01	1	DOUBLE WALL ADJUSTABLE DUCT - 18" INNER DUCT - 2 LAYERS REDUCED CLEARANCE - 22" STAINLESS STEEL OUTER SHELL. MIN LENGTH = 11' / MAX LENGTH = 24.5' / ADJUSTMENT = 13.5' / ADJUSTABLE SECTION MAY NEED TO BE CUT. INCLUDES SINGLE AND DOUBLE WALL 'V' CLAMPS.
P6	DW2226SADKIT						8.80		1	DUCT - HORIZONTAL SADDLE SUPPORT KIT, USED WITH 22" OD - INCLUDES UNI-STRUT CUT TO LENGTH, DW2226SAD, & HARDWARE BAG 4.
P7	DW1801DWOFFSETASY-2R-S	3400				-0.003	14.66	1924.01	1	DOUBLE WALL DUCT - 18" INNER DUCT RISER & 1 DEGREE OFFSET - 2 LAYERS REDUCED CLEARANCE - 22" STAINLESS STEEL OUTER SHELL.
P8 ASSEMBLED W/P9	DW18DWTEASY-2R-S	3400		1		-0.23	55.68	1924.01	1	DOUBLE WALL DUCT - 18" INNER TEE DUCT - 2 LAYERS REDUCED CLEARANCE - 22" STAINLESS STEEL OUTER SHELL.
P9 ASSEMBLED W/P8 O=S	DW18DWACDDORCOV-2R-S						26.16		1	DOUBLE WALL DUCT - 18" INNER ACCESS DOOR & 22" ACCESS DOOR COVER WITH CLAMPS - 2 LAYERS REDUCED CLEARANCE - 22" STAINLESS STEEL OUTER SHELL.
P10 ASSEMBLED W/P11	DW1835DWLTP-2R-S	3400				-0.011	58.74	1924.01	1	DOUBLE WALL DUCT - 18" INNER DUCT, 35' LONG - 2 LAYERS REDUCED CLEARANCE - 22" STAINLESS STEEL OUTER SHELL - USED WITH TRANSITION PLATES
P11 ASSEMBLED W/P10 SYSTEM AT P11	DW2618DPDBEX	3400					9.00	1924.01	1	DUCT TO CURB TRANSITION 3/4" DOWN TURN, 26 1/2" CURB TO 18" DUCT, 16 GA ALUMINIZED. USED ON NCA16FA / NCA16HPFA & NCA18FA / NCA18HPFA. TRANSITION PLATE OD IS 27.00" DESIGNED FOR USE WITH EXHAUST FAN. NON-STANDARD PART.
						-1.588	0.00			
	3M-2000PLUS						0.80		3	DUCT - 3M FIRE BARRIER 2000 PLUS SILICONE - USED AS SEALANT TO SEAL DUCT JOINTS.
	DW18DWCLASY-2R-S						8.70		3	DUCT - 18" DUCT - 22" DOUBLE 'V' CLAMP - 2R INSULATION & SINGLE 'V' CLAMP INCLUDED - REDUCED CLEARANCE.
TOTAL WEIGHT							483.08			

DOUBLE WALL FACTORY BUILT DUCTWORK

- ALL DUCTWORK IS REQUIRED TO BE INSTALLED WITH THE MAXIMUM SUPPORT SPACING LISTED BELOW.
- FOR A COMPLETE LIST OF APPROVED SUPPORT METHODS, SEE THE ENTIRE INSTALLATION AND OPERATION MANUAL
 - DUCTWORK SHALL SLOPE NOT LESS THAN 1/16" PER LINEAR FOOT TOWARDS THE HOOD OR AN APPROVED GREASE COLLECTION RESERVOIR.
 - WHERE HORIZONTAL DUCTS EXCEED 75 FEET IN LENGTH, THE SLOPE SHALL NOT BE LESS THAN 3/16" PER LINEAR FOOT.

HORIZONTAL	
DUCT DIAMETER	SUPPORT SPACING (FT)
5"	7'
6"	7'
7"	7'
8"	7'
10"	7'
12"	7'
14"	7'
16"	7'
18"	5'
20"	5'
22"	5'
24"	5'
26"	5'
28"	5'
30"	5'
32"	5'
34"	5'
36"	5'

VERTICAL			
TYPE	WALL SUPPORT (FT)	CURB SUPPORT (FT)	FLOOR SUPPORT (FT)
2R & 2R HT (5'-16")	20'	24'	24'
2R (18")	18'	24'	24'
3R & 3Z (5'-24")	10'	24'	24'
3Z (26" -36")	10'	20'	20'

DO NOT LEAK TEST USING SMOKE BOMBS CONTAINING
CHLORINES/CHLORIDES. CONSULT WITH CAPTIVEAIRE
FOR PROPER LEAK TESTING METHODS.

NOTE: UNLESS OTHERWISE STATED, PANDA RESTAURANT GROUP SHALL PROVIDE ALL EQUIPMENT ON THE FOLLOWING CAPTIVEAIRE SHEETS, INCLUDING: HOODS, FIRE SYTEM, EXHAUST FANS, SUPPLY FAN, BATHROOM FAN AND ELECTRICAL INTERLOCK PACKAGE

DOUBLE WALL DUCT BY MECHANICAL PLEASE USE CONTACT BELOW FOR PRICING

ANSUL GAS VALVE:

THE ANSUL GAS VALVE IS PROVIDED BY CAPTIVEAIRE SYSTEMS. CONTACT OUR OFFICE WITH THE VALVE SIZE 3 DAYS IN ADVANCE OF WHEN IT IS NEEDED ON SITE.

FOR QUESTIONS CALL THE
CAPTIVEAIRE
SOUTHERN CALIFORNIA OFFICE

3002 DDW AVENUE, SUITE 410
TUSTIN, CA 92780
TEL: 714-957-1500 EMAIL: REG86@CAPTIVEAIRE.COM

Panda Express - Bradenton FL (Pope)
SR 64 & Pope Road,
Bradenton, FL, 34208

DATE: 11/14/2022

DWG.#:
5729875

DRAWN BY: AH-86

SCALE:
3/4" = 1'-0"

MASTER DRAWING

KPI ENGINEERING, INC.

PROFESSIONAL ENGINEERS

"No matter the Scope, KPI has YOU Covered"

3203 QUEEN PALM DRIVE
TAMPA, FLORIDA 33619
PHONE (813) 241-6488
FAX (813) 241-6498

BOARD OF PROFESSIONAL ENGINEERS - LICENSE # 27356



PANDA EXPRESS, INC.
1683 Walnut Grove Ave.
Rosemead, California
91770

Telephone: 626.799.9898
Facsimile: 626.372.8288

All ideas, designs, arrangement and plans indicated or represented by this drawing are the property of Panda Express Inc. and were created for use on this specific project. None of these ideas, designs, arrangements or plans may be used by or disclosed to any person, firm, or corporation without the written permission of Panda Express Inc.

REVISIONS:

[illegible]

ISSUE DATE:

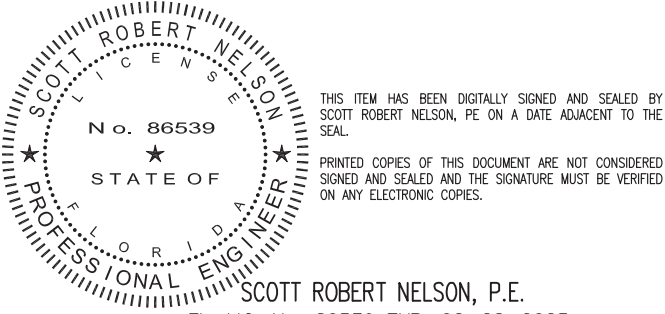
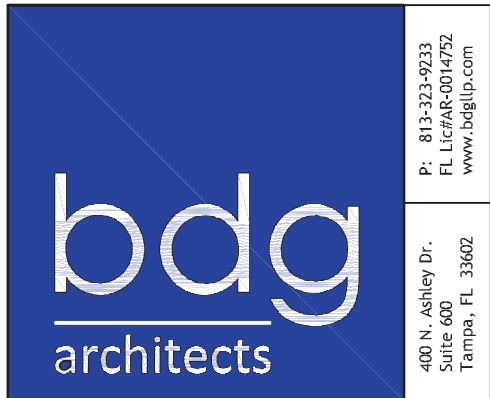
	PERMIT SET	12-20-2022
	REV 1	08-11-2023
	BID SET	08-11-2023

DRAWN BY: BDG

PANDA PROJECT #: D23223

PANDA STORE #: TBD

ARCH PROJECT #: 229204



PANDA EXPRESS

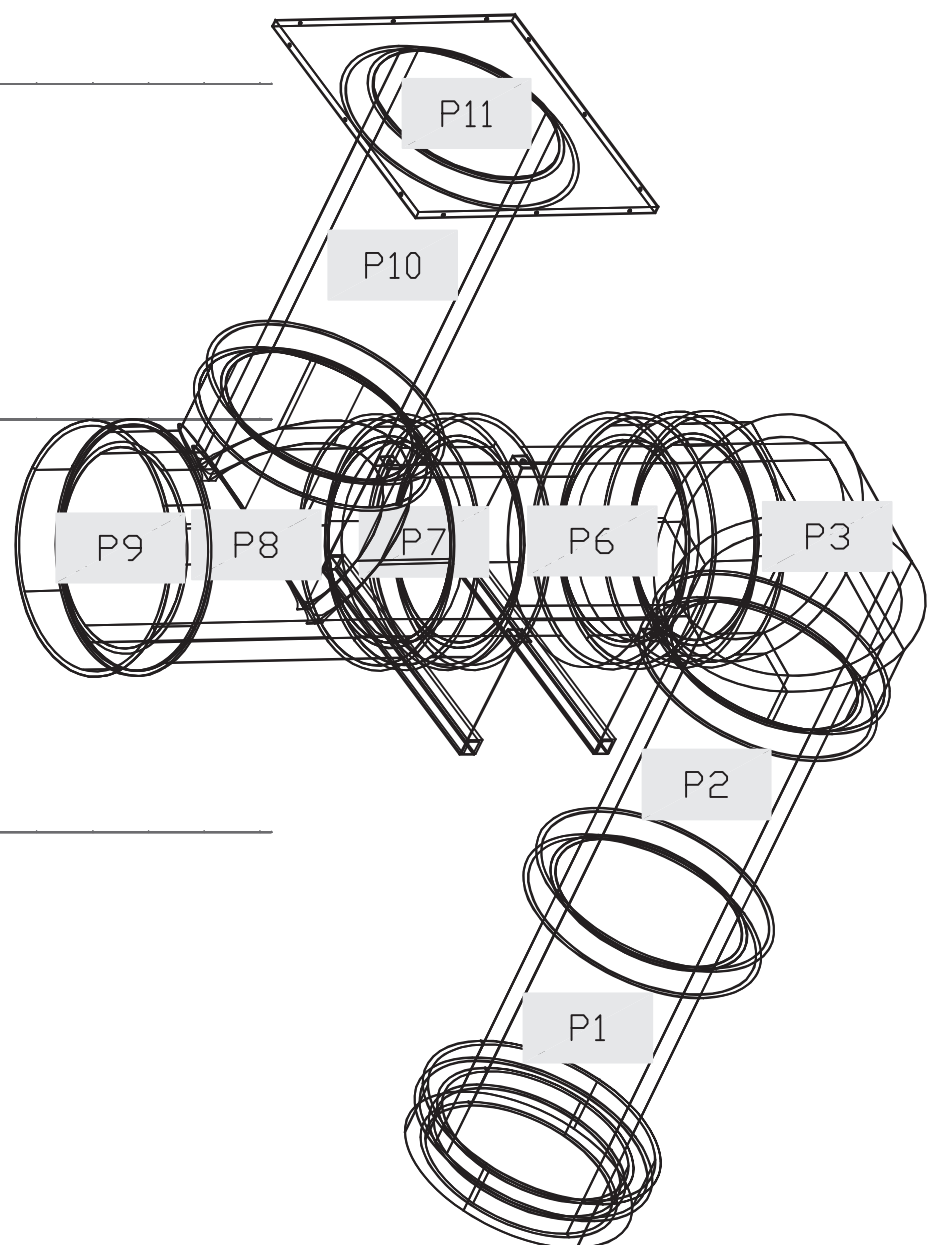
PANDA HOME 2600
SR 64 & POPE ROAD
BRADENTON, FL 34208

M-408

HOOD DETAIL PLAN

PANDA HOME 2600 R4

DUCTWORK #1 TOP VIEW DUCTWORK #1 SE VIEW



REVISONS	
DESCRIPTION	DATE:
Δ	
Δ	
Δ	
Δ	
Δ	

CAPTIVE

Southern California Office

3002 Dow Ave., Suite 410, Tustin, CA 92780 PHONE: (714) 957-1500 FAX: (919) 227-5975 EMAIL: reg86@captiveire.com






www.captiveire.com

SHEET NO.
10

FOR QUESTIONS CALL THE
CAPTIVEAIRE
SOUTHERN CALIFORNIA OFFICE
3002 DOW AVENUE, SUITE 410
TUSTIN, CA 92780
TEL: 714-957-1500 EMAIL: REG686@CAPTIVEAIRE.COM

KPI ENGINEERING, INC.
PROFESSIONAL ENGINEERS



All ideas, designs, arrangement and plans indicated or represented by this drawing are the property of Panda Express Inc. and were created for use on this specific project. None of these ideas, designs, arrangements or plans may be used by or disclosed to any person, firm, or corporation without the written permission of Panda Express Inc.

REVISIONS:

ISSUE DATE:	
PERMIT SET	12-20-2023
REV 1	08-11-2023
BID SET	08-11-2023

ISSUE DATE:

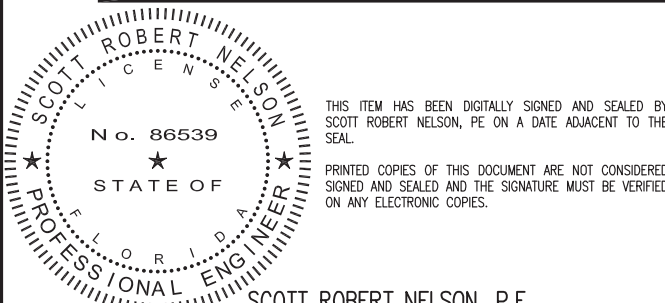
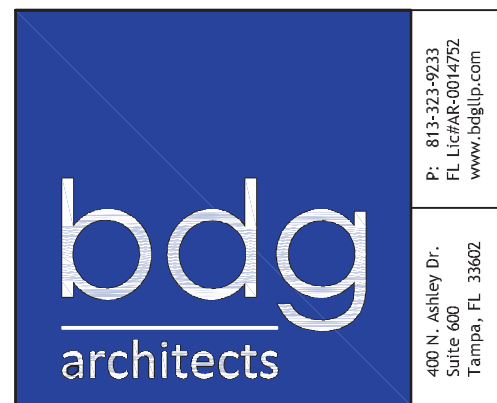
PERMIT SET	12-20-2023
REV 1	08-11-2023
BID SET	08-11-2023

DRAWN BY: BDG

PANDA PROJECT #: D23223

PANDA STORE #: TBD

ARCH PROJECT #: 229204



PANDA EXPRESS

PANDA HOME 2600
SR 64 & POPE ROAD
BRADENTON, FL 34208

M-409

HOOD DETAIL PLAN

PANDA HOME 2600 R4

DUCTWORK #2 PARTS - JOB#5729875 DOUBLE WALL

TAG	PART #	CFM	GPM	ZONE	COVEREDBY	SP	WEIGHT	VELOCITY	QTY	DESCRIPTION
P1	DW1829DWLT-2R-S	2900				-0.007	50.46	1641.06	1	DOUBLE WALL DUCT - 18" INNER DUCT, 29" LONG - 2 LAYERS REDUCED CLEARANCE - 22" STAINLESS STEEL OUTER SHELL.
P2	DW1847DWAJD-2R-S	2900				-0.006	107.98	1641.06	1	DOUBLE WALL ADJUSTABLE DUCT - 18" INNER DUCT - 2 LAYERS REDUCED CLEARANCE - 22" STAINLESS STEEL OUTER SHELL. MIN LENGTH = 11" / MAX LENGTH = 48.5" / ADJUSTMENT = 30.5" / ADJUSTABLE SECTION MAY NEED TO BE CUT. INCLUDES SINGLE AND DOUBLE WALL CLAMPS.
P3	DW1890DWASY-2R-S	2900				-0.084	45.59	1641.06	1	DOUBLE WALL DUCT - 18" INNER 90 DUCT - 2 LAYERS REDUCED CLEARANCE - 22" STAINLESS STEEL OUTER SHELL.
P4	DW1801DWOFFSETASY-2R-S	2900				-0.002	14.66	1641.06	1	DOUBLE WALL DUCT - 18" INNER DUCT RISER & 1 DEGREE OFFSET - 2 LAYERS REDUCED CLEARANCE - 22" STAINLESS STEEL OUTER SHELL.
P5	DW1827DWAJD-2R-S	2900				-0.004	62.85	1641.06	1	DOUBLE WALL ADJUSTABLE DUCT - 18" INNER DUCT - 2 LAYERS REDUCED CLEARANCE - 22" STAINLESS STEEL OUTER SHELL. MIN LENGTH = 11" / MAX LENGTH = 24.5" / ADJUSTMENT = 13.5" / ADJUSTABLE SECTION MAY NEED TO BE CUT. INCLUDES SINGLE AND DOUBLE WALL 'V' CLAMPS.
P6	DW2226SADKIT						8.80		1	DUCT - HORIZONTAL SADDLE SUPPORT KIT, USED WITH 22" OD - INCLUDES UNI-STRUT CUT TO LENGTH, DW2226SAD, & HARDWARE BAG 4.
P7	DW1801DWOFFSETASY-2R-S	2900				-0.002	14.66	1641.06	1	DOUBLE WALL DUCT - 18" INNER DUCT RISER & 1 DEGREE OFFSET - 2 LAYERS REDUCED CLEARANCE - 22" STAINLESS STEEL OUTER SHELL.
P8 ASSEMBLED W/P9	DW18DWTEASY-2R-S	2900		1		-0.168	55.68	1641.06	1	DOUBLE WALL DUCT - 18" INNER TEE DUCT - 2 LAYERS REDUCED CLEARANCE - 22" STAINLESS STEEL OUTER SHELL.
P9 ASSEMBLED W/P8 & P5	DW18DWACDDORCOV-2R-S						26.16		1	DOUBLE WALL DUCT - 18" INNER ACCESS DOOR & 22" ACCESS DOOR COVER WITH CLAMPS - 2 LAYERS REDUCED CLEARANCE - 22" STAINLESS STEEL OUTER SHELL.
P10 ASSEMBLED W/P11	DW1835DWLTP-2R-S	2900				-0.008	58.74	1641.06	1	DOUBLE WALL DUCT - 18" INNER DUCT, 35" LONG - 2 LAYERS REDUCED CLEARANCE - 22" STAINLESS STEEL OUTER SHELL - USED WITH TRANSITION PLATES
P11 ASSEMBLED W/P10 SYSTEM AT P11	DW2618TPDBEX	2900					9.00	1641.06	1	DUCT TO CURB TRANSITION 3/4" DOWN TURN, 26 1/2" CURB TO 18" DUCT, 16 GA ALUMINIZED. USED ON NCA16FA / NCA16HPFA & NCA18FA / NCA18HPFA. TRANSITION PLATE OD IS 27.00" DESIGNED FOR USE WITH EXHAUST FAN. NON-STANDARD PART.
	3M-2000PLUS					-1.178	0.00			
							0.80		3	DUCT - 3M FIRE BARRIER 2000 PLUS SILICONE - USED AS SEALANT TO SEAL DUCT JOINTS.
	DW18DWCLASY-2R-S						8.70		3	DUCT - 18" DUCT - 22" DOUBLE 'V' CLAMP - 2R INSULATION & SINGLE 'V' CLAMP INCLUDED - REDUCED CLEARANCE.
TOTAL WEIGHT							483.08			

DOUBLE WALL FACTORY BUILT DUCTWORK

- ALL DUCTWORK IS REQUIRED TO BE INSTALLED WITH THE MAXIMUM SUPPORT SPACING LISTED BELOW.
- FOR A COMPLETE LIST OF APPROVED SUPPORT METHODS, SEE THE ENTIRE INSTALLATION AND OPERATION MANUAL
 - DUCTWORK SHALL SLOPE NOT LESS THAN 1/16" PER LINEAR FOOT TOWARDS THE HOOD OR AN APPROVED GREASE COLLECTION RESERVOIR.
 - WHERE HORIZONTAL DUCTS EXCEED 75 FEET IN LENGTH, THE SLOPE SHALL NOT BE LESS THAN 3/16" PER LINEAR FOOT.

HORIZONTAL	
DUCT DIAMETER	SUPPORT SPACING (FT)
5"	7'
6"	7'
7"	7'
8"	7'
10"	7'
12"	7'
14"	7'
16"	7'
18"	5'
20"	5'
22"	5'
24"	5'
26"	5'
28"	5'
30"	5'
32"	5'
34"	5'
36"	5'

VERTICAL			
TYPE	WALL SUPPORT (FT)	CURB SUPPORT (FT)	FLOOR SUPPORT (FT)
2R & 2R HT (5'-16")	20'	24'	24'
2R (18")	18'	24'	24'
3R & 3Z (5'-24")	10'	24'	24'
3Z (26" -36")	10'	20'	20'

DO NOT LEAK TEST USING SMOKE BOMBS CONTAINING CHLORINES/CHLORIDES. CONSULT WITH CAPTIVEAIRE FOR PROPER LEAK TESTING METHODS.

NOTE: UNLESS OTHERWISE STATED, PANDA RESTAURANT GROUP SHALL PROVIDE ALL EQUIPMENT ON THE FOLLOWING CAPTIVEAIRE SHEETS, INCLUDING HOODS, FIRE SYSTEM, EXHAUST FANS, SUPPLY FAN, BATHROOM FAN AND ELECTRICAL INTERLOCK PACKAGE

DOUBLE WALL DUCT BY MECHANICAL PLEASE USE CONTACT BELOW FOR PRICING

ANSUL GAS VALVE:

THE ANSUL GAS VALVE IS PROVIDED BY CAPTIVEAIRE SYSTEMS. CONTACT OUR OFFICE WITH THE VALVE SIZE 3 DAYS IN ADVANCE OF WHEN IT IS NEEDED ON SITE.

FOR QUESTIONS CALL THE
CAPTIVEAIRE
SOUTHERN CALIFORNIA OFFICE

3002 BOW AVENUE, SUITE 410
TUSTIN, CA 92780

TEL: 714-957-1500 EMAIL: REG@CAPTIVEAIRE.COM

REVISIONS		DATE:
DESCRIPTION		
△		
△		
△		
△		
△		
		 www.captivelife.com
<h1>CAPTIVELIFE</h1>		Southern California Office 3002 Dow Ave., Suite 410, Tustin, CA. 92780 PHONE: (714) 957-1500 FAX: (919) 227-5575 EMAIL: reg@captivelife.com
Panda Express - Bradenton FL (Pope)		
SR 64 & Pope Road,		
Bradenton, FL, 34208		
DATE: 11/14/2022		
DWG.#: 5729875		
DRAWN BY: AH-86		
SCALE: 3/4" = 1'-0"		
MASTER DRAWING		
SHEET NO.		
11		

KPI ENGINEERING, INC.

PROFESSIONAL ENGINEERS

"No matter the Scope, KPI has YOU Covered"

3203 QUEEN PALM DRIVE
TAMPA, FLORIDA 33619
PHONE (813) 241-6488
FAX (813) 241-6498

BOARD OF PROFESSIONAL ENGINEERS - LICENSE # 27336



PANDA EXPRESS, INC.
1683 Walnut Grove Ave.
Rosemead, California
91770
Telephone: 626.799.9898
Facsimile: 626.372.8288

REVISIONS:

ISSUE DATE:

PERMIT SET	12-20-2022
REV 1	08-11-2023
BID SET	08-11-2023

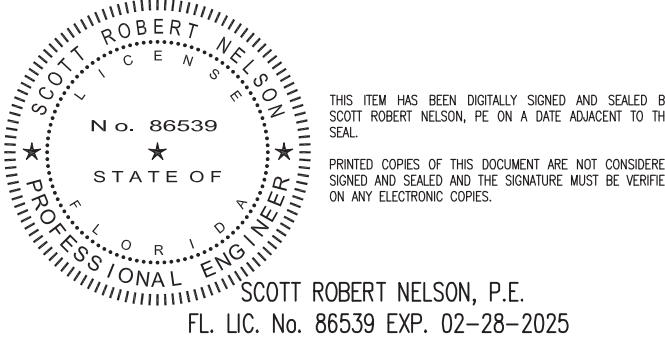
DRAWN BY: BDG

PANDA PROJECT #: D23223
PANDA STORE #: TBD
ARCH PROJECT #: 229204

bdg
architects

P: 813-323-9233
FL LIC#AR-001472
www.bdgip.com

403 N. Ashley Dr.
Suite 600
Tampa, FL 33602



PANDA EXPRESS

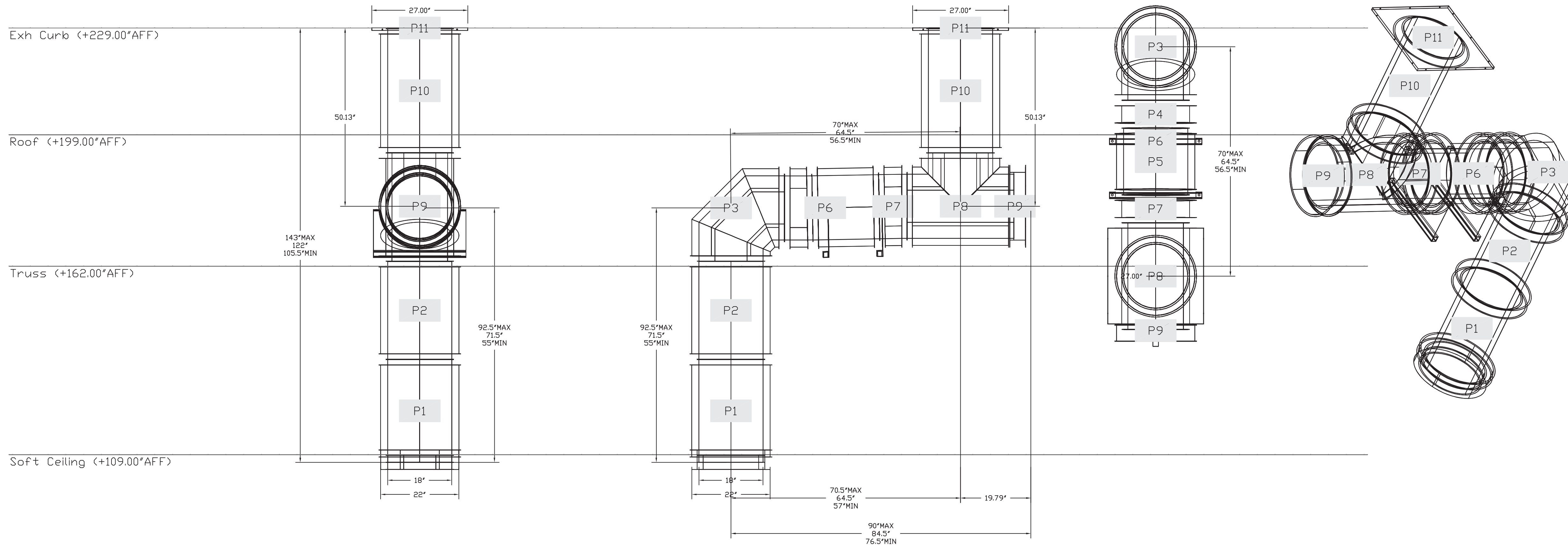
PANDA HOME 2600
SR 64 & POPE ROAD
BRADENTON, FL 34208

M-410

HOOD DETAIL PLAN

PANDA HOME 2600 R4

DUCTWORK #2 TOP VIEW DUCTWORK #2 SE VIEW



NOTE: UNLESS OTHERWISE STATED, PANDA RESTAURANT GROUP SHALL PROVIDE ALL EQUIPMENT ON THE FOLLOWING CAPTIVEAIRE SHEETS, INCLUDING HOODS, FIRE SYSTEM, EXHAUST FANS, SUPPLY FAN, BATHROOM FAN AND ELECTRICAL INTERLOCK PACKAGE

DOUBLE WALL DUCT BY MECHANICAL PLEASE USE CONTACT BELOW FOR PRICING

ANSUL GAS VALVE:

THE ANSUL GAS VALVE IS PROVIDED BY CAPTIVEAIRE SYSTEMS. CONTACT OUR OFFICE WITH THE VALVE SIZE 3 DAYS IN ADVANCE OF WHEN IT IS NEEDED ON SITE.

FOR QUESTIONS CALL THE
CAPTIVEAIRE AIR
SOUTHERN CALIFORNIA OFFICE

3002 DOW AVENUE, SUITE 410
TUSTIN, CA 92780
TEL: 714-957-1500 EMAIL: REG66@CAPTIVEAIRE.COM

	Panda Express – Bradenton FL (Pope)	
	SR 64 & Pope Road,	
	Bradenton, FL, 34208	
	DATE: 11/14/2022	
	DWG.#: 5729875	
	DRAWN BY: AH-86	
	SCALE: 3/4" = 1'-0"	
	MASTER DRAWING	
	SHEET NO. 12	



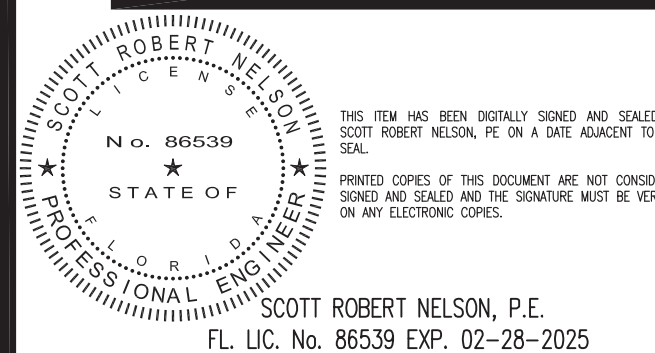
All ideas, designs, arrangement and plans indicated or represented by this drawing are the property of Panda Express Inc. and were created for use on this specific project. None of these ideas, designs, arrangements or plans may be used by or disclosed to any person, firm, or corporation without the written permission of Panda Express Inc.

REVISIONS:

[illegible]

DRAWN BY: BDG

PANDA PROJECT #: D23223
PANDA STORE #: TBD
ARCH PROJECT #: 229204



PANDA EXPRESS
PANDA HOME 2600
SR 64 & POPE ROAD
BRADENTON, FL 34208

M-411

HOOD DETAIL PLAN

PANDA HOME 2600 R4

PANDA HOME 2600 R4

