

CORNER RECORD

Agency Index

BOOK 112 PAGE 14

Document Number

CR 11567

City of BERKELEYCounty of ALAMEDA, CaliforniaCITY OF BERKELEY (C.O.B.) MONUMENT B2305 AS SHOWN UPON CR 10922 (BK 105, PG 23)
NEAR THE INTERSECTION OF BANCROFT WAY AND TELEGRAPH AVENUE.**Brief Legal Description****CORNER TYPE****COORDINATES (Optional)**RANCHO
SAN
ANTONIO
(V & D PERALTA)Government Corner ☐ Control
Meander ☐ Property
Rancho ☐ Other

N. _____ E. _____

☒ Elevation _____Units Metric ☐ U.S. Survey Foot ☒☐ Horizontal Datum _____

Zone _____ Epoch Date _____

Vertical Datum _____

Date of Survey 4/2/2018☐ Complies with Public Resources Code §§8801-8819☐ Complies with Public Resources Code §§8890-8902PLS Act Ref: ☐ 8765(d)☒ 8771☐ 8773☐ Other:Corner/
Monument: ☒ Left as found☐ Established☐ Rebuilt☒ Pre-Construction☐ Found and tagged ☐ Reestablished☒ Referenced☐ Post-Construction

Narrative of corner identified and monument as found, set, reset, replaced, or removed:

☒ See sheet #2 for description (s):

FOUND MONUMENT THAT COULD BE DAMAGED OR DESTROYED BY A PROPOSED GAS LINE CONSTRUCTION PROJECT. MONUMENT WAS PREVIOUSLY REFERENCED BY OTHERS AND VERIFIED AS SHOWN ON PAGE 2 OF 2.

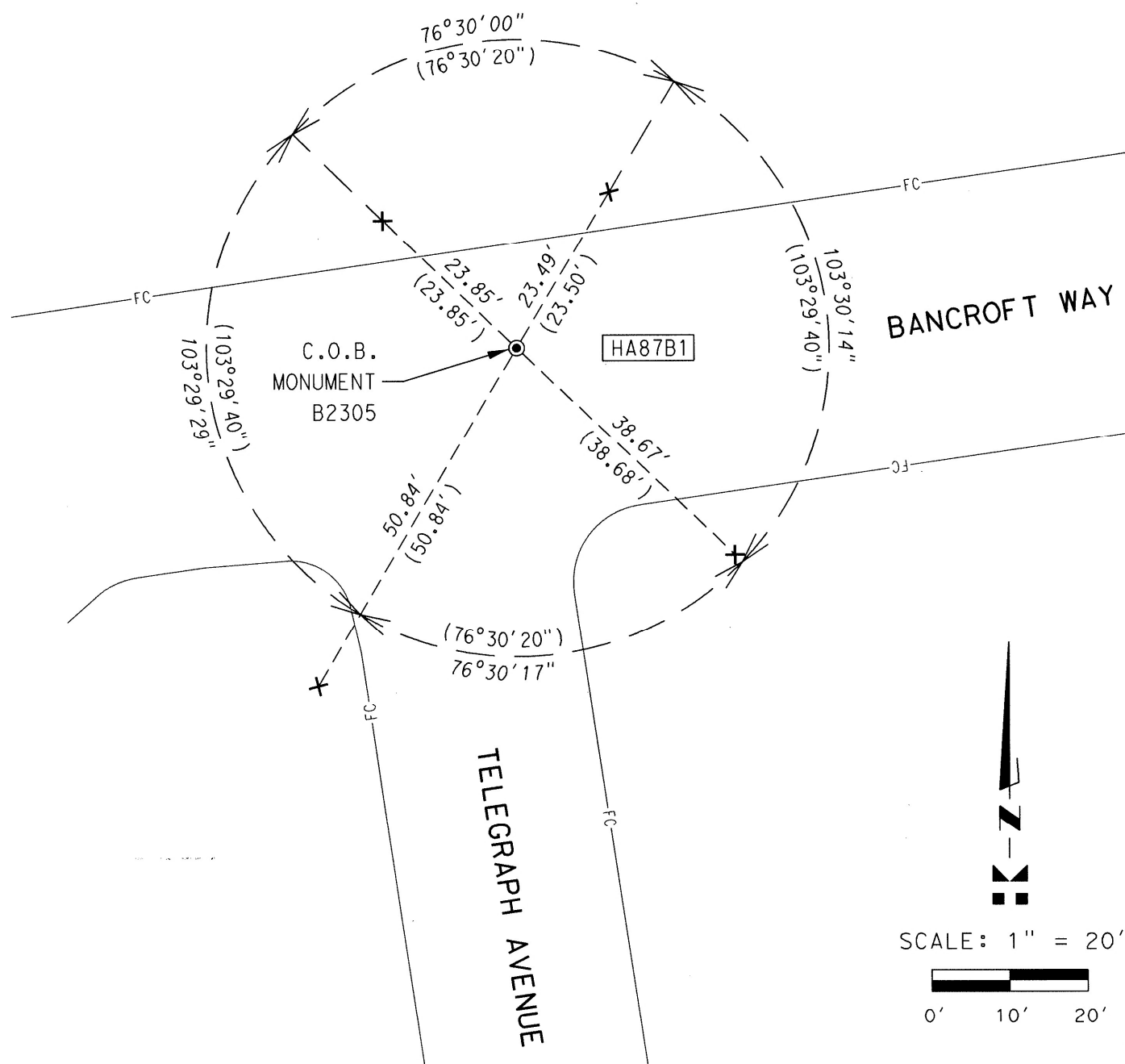
THE PURPOSE OF THIS CORNER RECORD IS TO PRESERVE THE LOCATION OF THE MONUMENT PRIOR TO CONSTRUCTION. NO ATTEMPT WAS MADE TO DETERMINE THE RELATIONSHIP BETWEEN THE MONUMENT AND PROPERTY LINES, RIGHT-OF-WAY LINES, CENTERLINES OR OTHER MONUMENTS.

NOTE: THIS CORNER RECORD IS TO SERVE AS NOTICE THAT THE MONUMENT AND REFERENCE POINTS FROM CR 10922 WERE FOUND TO BE IN GOOD CONDITION. MEASUREMENTS AS SHOWN ON SHEET 2 OF 2 WERE TAKEN TO DETERMINE THAT NO SIGNIFICANT DIFFERENCE BETWEEN RECORD AND MEASURED WERE PRESENT. THIS CORNER RECORD IS NOT INTENDED TO SUPERSEDE CR 10922.

SURVEYOR'S STATEMENTThis Corner Record was prepared by me or under my direction in conformance with
the Professional Land Surveyors' Act on AUGUST 8, 2018Signed [Signature] P.L.S. or R.C.E. No. 8911**COUNTY SURVEYOR'S STATEMENT**This Corner Record was received 14 JUNE 2018and examined and filed 24 AUGUST 2018Signed [Signature] P.L.S. or R.C.E. No. 6843Title COUNTY SURVEYOR

County Surveyor's Comment _____

CC-14126_79
 **MARK
THOMAS**



LEGEND:

- FOUND BRASS DISK IN WELL FROM CR 10922
- × FOUND CUT CROSS REFERENCE POINT IN CONCRETE SIDEWALK FROM CR 10922
- () RECORD INFORMATION FROM CR 10922 (BK 105, PG 23)
- HA87B1 ALAMEDA COUNTY MONUMENT IDENTIFICATION NUMBER FROM CR 10922