

# PARCEL MAP NO. 1204 FOR VICTOR EPOLITO

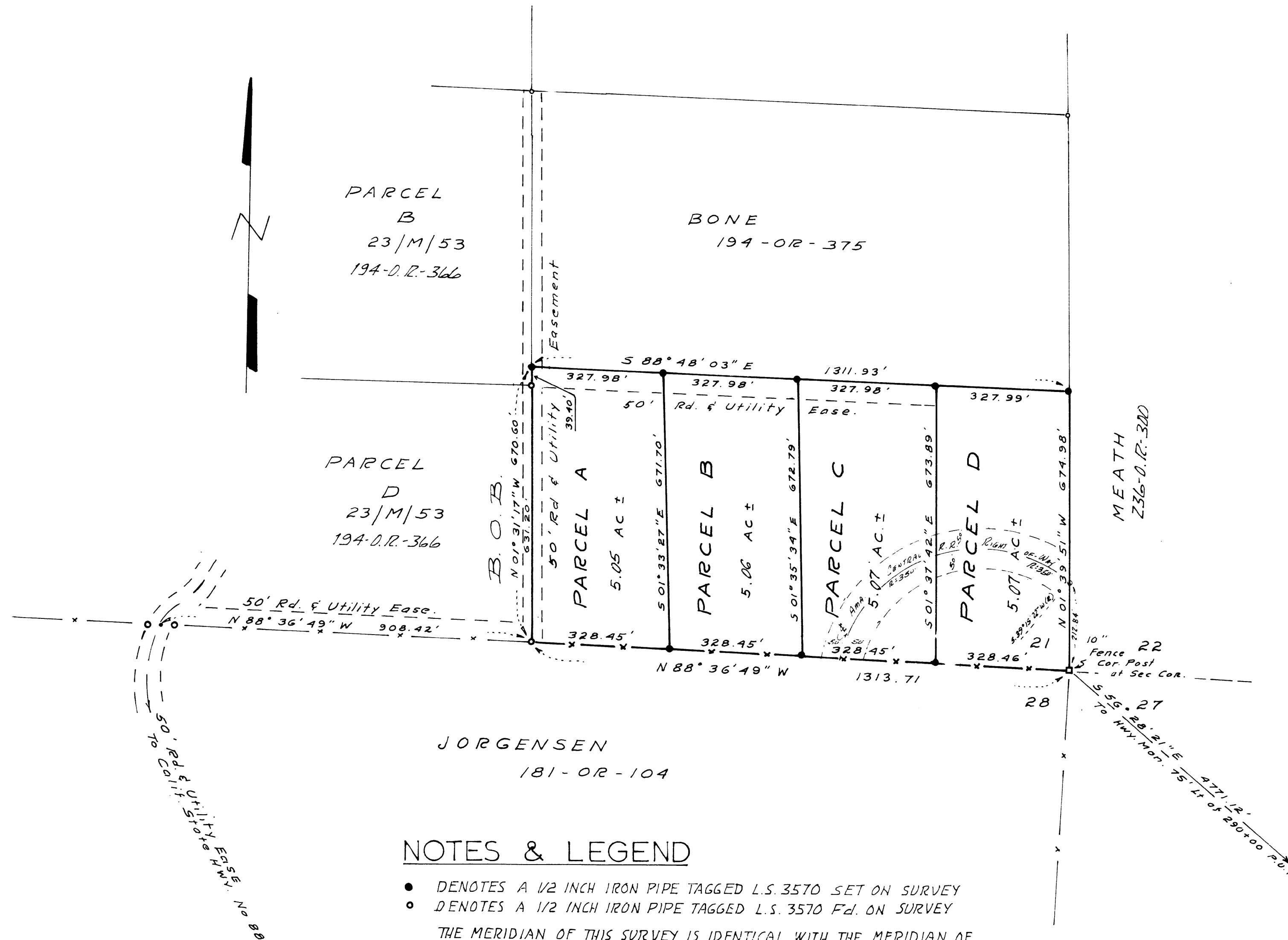
235 - O.R. - 693

BEING THE S.1/2 OF THE S.E.1/4 OF THE S.E.1/4 OF SECTION 21, T.6N., R.10E., M.D.M..

AMADOR COUNTY, CALIFORNIA

OCTOBER 1973

SCALE: 1" = 200'



TOMA & ANDERSON  
LICENSED LAND SURVEYORS  
41 SUMMIT ST. JACKSON, CALIF.

## SURVEYOR'S CERTIFICATE

THIS MAP WAS PREPARED BY ME OR UNDER MY DIRECTION AND IS BASED UPON A FIELD SURVEY IN CONFORMANCE WITH THE REQUIREMENTS OF THE SUBDIVISION MAP ACT AT THE REQUEST OF VICTOR EPOLITO IN OCTOBER 1973. I HEREBY CERTIFY THAT IT CONFORMS TO THE APPROVED TENTATIVE MAP AND THE CONDITIONS THEREOF. THAT ALL PROVISIONS OF APPLICABLE STATE LAW AND LOCAL ORDINANCES HAVE BEEN COMPLIED WITH.

Ciro L. Toma  
CIRO L. TOMA L.S. 3570

## COUNTY SURVEYOR'S CERTIFICATE

THIS MAP HAS BEEN EXAMINED THIS 7<sup>th</sup> DAY OF March 1974 FOR CONFORMANCE WITH THE REQUIREMENTS OF SECTION 11575 OF THE SUBDIVISION MAP ACT

Keith J. Hume L.S. 2774  
AMADOR COUNTY SURVEYOR

## COUNTY RECORDERS CERTIFICATE

FILED THIS 7<sup>th</sup> DAY OF March 1974 AT 5:00 P.M. IN BOOK 27 OF MAPS AND PLATS AT PAGE 6 AT THE REQUEST OF THE AMADOR COUNTY SURVEYOR

FEE 2.00

1035

AMADOR COUNTY RECORDER