

A DIVISION OF EMITT ASSOCIATES



BRITT, PETERS  
— AND —  
ASSOCIATES  
— INC. —  
consulting engineers

999 Waterside Drive  
Suite 2202  
Norfolk, VA 23510  
(757) 956-5710  
[www.brittpeters.com](http://www.brittpeters.com)  
BPA Project No. 220406

[illegible]

CONTRACT DATE:	03/31/2022
BUILDING TYPE:	END. MED 40
PLAN VERSION:	SEPT. 2021
BRAND DESIGNER:	
ITE NUMBER:	315669
NTITY NUMBER:	458169
A/PM:	DRA
RAWN BY.:	ES
DB NO.:	22204

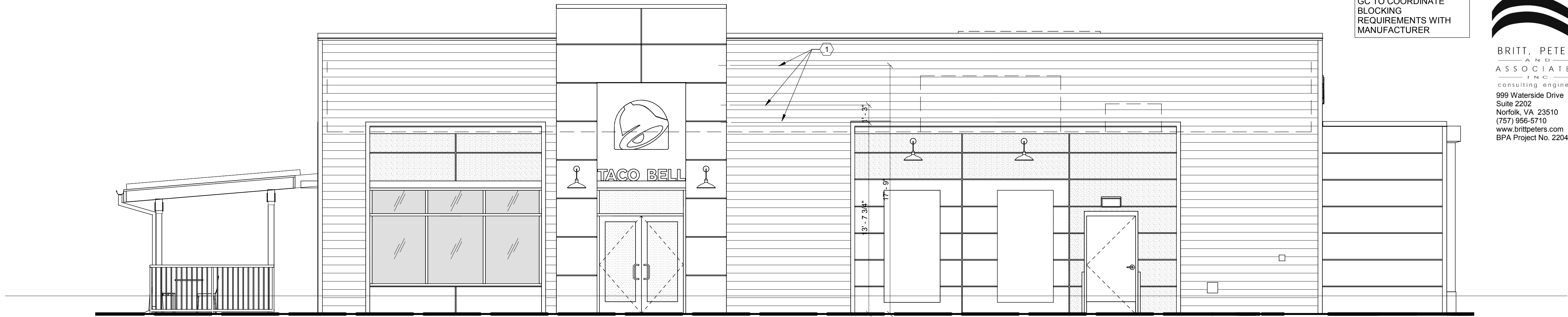
ENDEAVOR 2.0  
SPEARS CREEK CHURCH RD  
(BY LIBERTY RIDGE DRIVE)  
SOUTH CAROLINA 29229



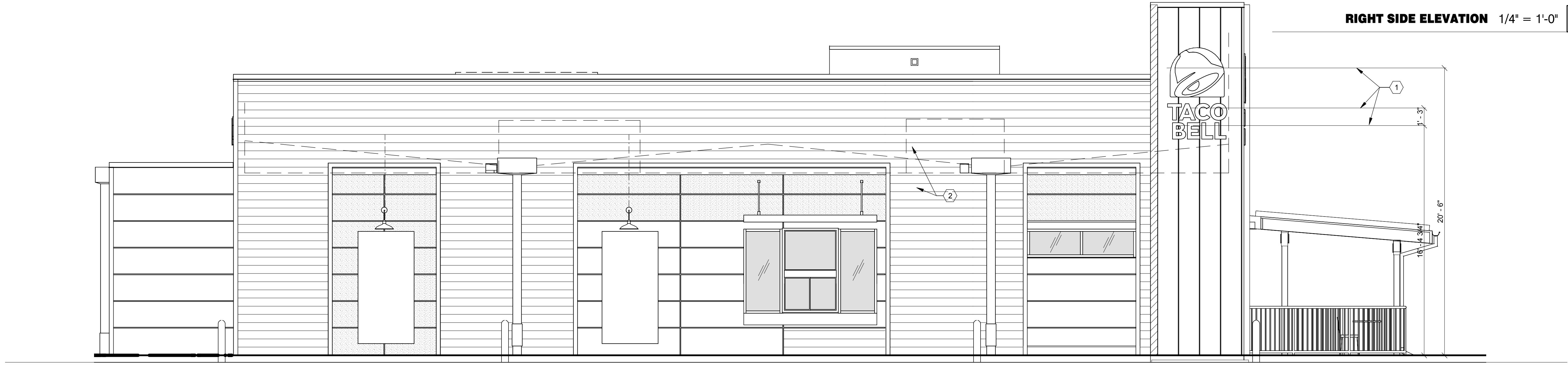
ENDEAVOR 2.0  
ANOPY/AWNING  
BLOCKING  
ELEVATIONS

# S5.0

LOT DATE: 5/12/2022 6:52:13 PM



**A**

**B****F****E**

- 01 SOLID BLOCKING FOR FASTENERS AS REQUIRED FOR SIGN MOUNTING.
- 02 PROVIDE BLOCKING FOR CANOPY. SEE DETAIL 3/S4.3.

**C**

1. EXTEND BLOCKING AS REQUIRED TO FIT BETWEEN STUDS.
2. ELEVATION AT BOTTOM OF CANOPIES SHALL BE 0'-0" A.F.F. (U.N.O.).
3. COORDINATE SIGNAGE ELEMENTS AND BLOCKING REQUIREMENTS WITH SIGNAGE VENDOR; SEE SCOPE OF WORK.
4. THIS SHEET IS TO INDICATE BLOCKING REQUIREMENTS FOR AWNING AND CANOPIES. ADDITIONAL BLOCKING IS REQUIRED FOR OTHER ITEMS AS SHOWN ON OTHER DRAWINGS.

**D**

Autodesk Docs://BPA Collaborate R22/220602\_STRU\_Taco Bell - Elgin, SC\_R22.mt

CAUTION: IF THIS SHEET IS NOT 22"x34" IT IS A REDUCED PRINT