

Parcel Map 10364

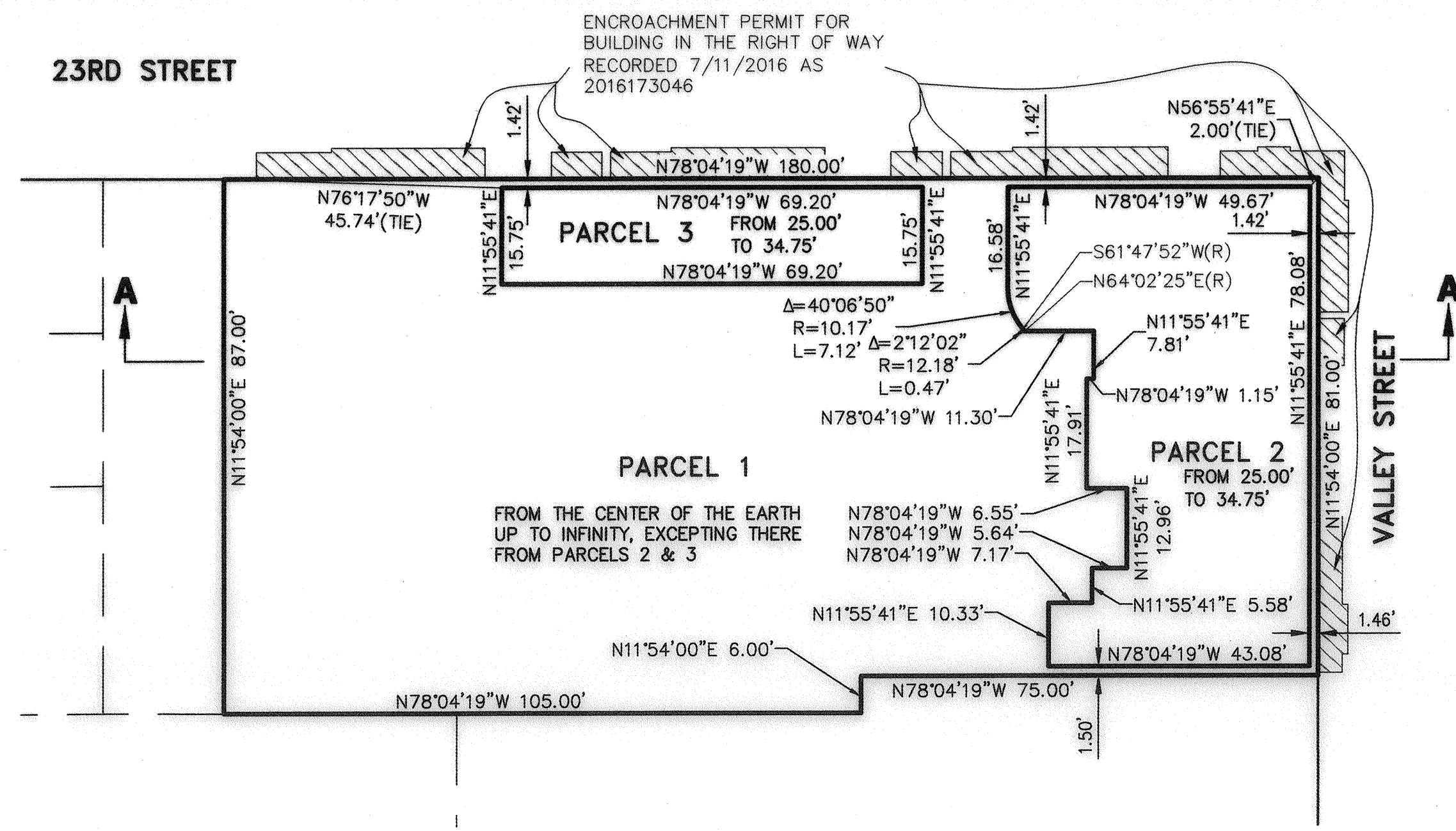
Map OK 334

Pg. 18

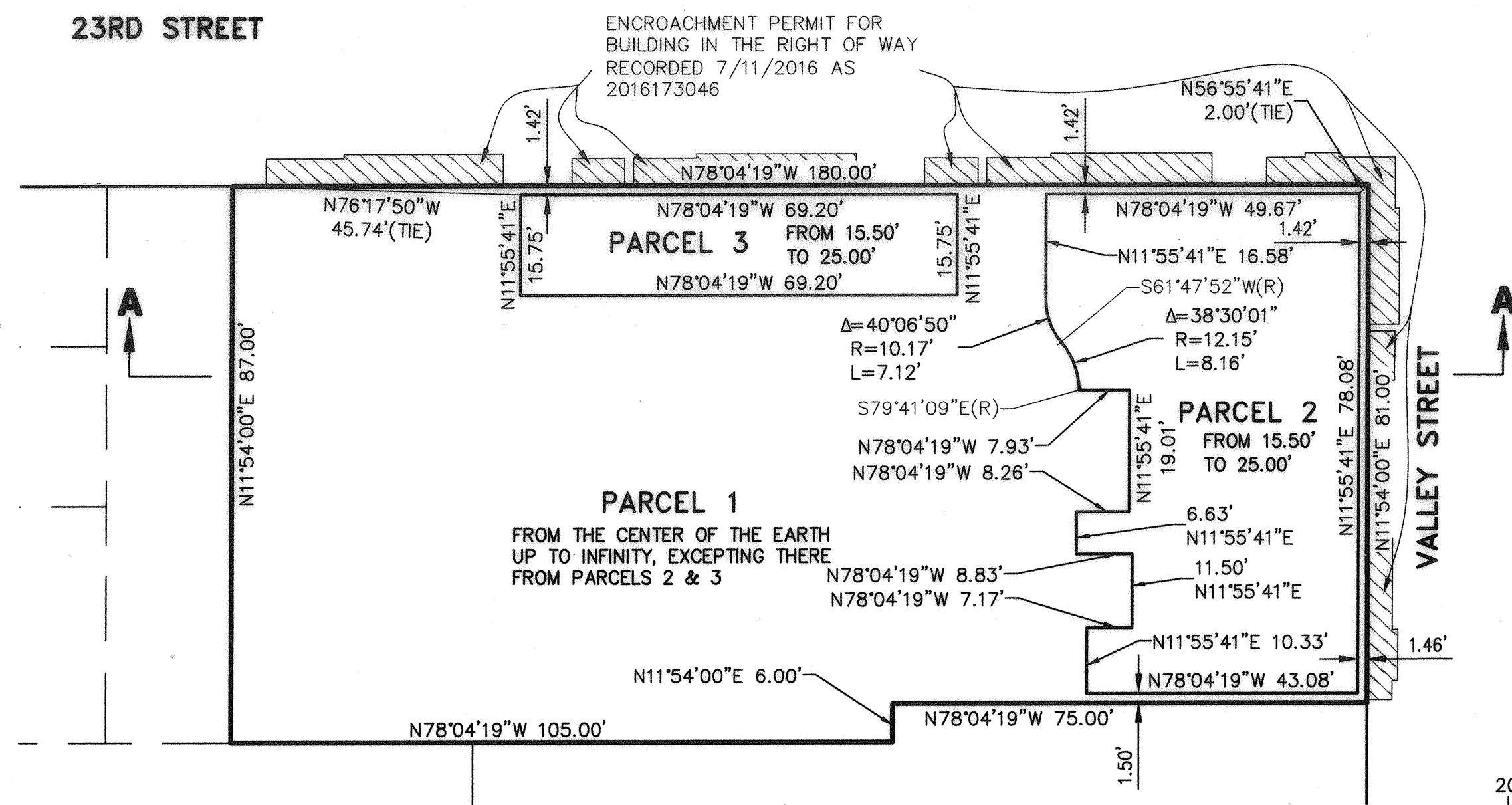
# PARCEL MAP 10364 FOR CONDOMINIUM PURPOSES

A PORTION OF LOTS 1, 2, & 3 IN BLOCK 10 OF THE MAP OF  
PACIFIC HOMESTEAD (BK W DEEDS PG 2) AS DESCRIBED AS PARCEL  
1 & 2 IN DOCUMENT NO. 2016-185032 BEING MERGED TO CREATE  
3 PARCELS, 1 RESIDENTIAL AND 2 COMMERCIAL (65 RESIDENTIAL  
CONDOMINIUM UNITS TO BE CREATED BY SEPARATE DOCUMENT)  
OAKLAND ALAMEDA COUNTY CALIFORNIA

**dk CONSULTING**  
PLANNING-ENGINEERING-CONSTRUCTION  
1931 SAN MIGUEL DRIVE, SUITE 100  
WALNUT CREEK, CALIFORNIA 94596  
(925) 932-6868  
AUGUST 29, 2016



**MEZZANINE**  
BETWEEN AND INCLUDING ELEVATIONS OF 25.00' AND 34.75'



**GROUND FLOOR**  
BETWEEN AND INCLUDING THE ELEVATIONS OF 15.50' AND 25.00'

## LEGEND

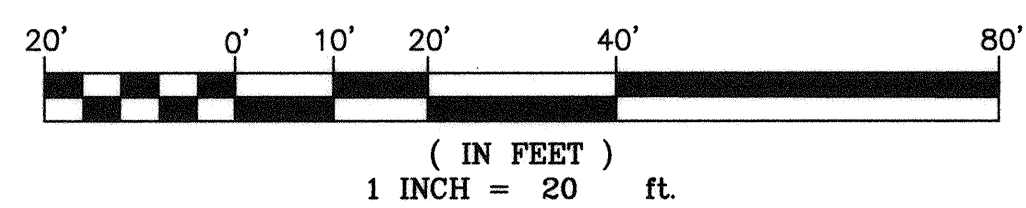
- BOUNDARY
- ADJACENT PROPERTY
- RIGHT-OF-WAY
- PROPOSED PARCEL LINES
- SF SQUARE FEET

## BENCH MARK:

A MONUMENT AT THE TOP OF CURB WEST RETURN OF THE  
NORTHWEST CORNER OF 23RD STREET AND TELEGRAPH  
AVENUE, WITH AN ELEVATION OF 17.684 FEET PER THE CITY  
OF OAKLAND MONUMENT BENCHMARK No 37Jc ON BOOK 18  
AT PAGE 71.

## BASIS OF BEARINGS:

THE MONUMENT LINE ON VALLEY STREET  
TAKEN AS NORTH 11°54'00" EAST PER  
FINAL MAP 8530 (286 M 34).



PROPOSED PARCELS  
SHEET 4 OF 4